

**AN-X-MOD (Monitor)
Modicon
S908 Remote I/O
Monitor**

User Manual



A product of Quest Technical Solutions

Sold and Supported by
ProSoft Technology Inc.
www.prosoft-technology.com



Because of the variety of uses for the products described in this publication, those responsible for the application and use of these products must satisfy themselves that all necessary steps have been taken to assure that each application and use meets all performance and safety requirements, including any applicable laws, regulations, codes and standards. In no event will Quest Technical Solutions be responsible or liable for indirect or consequential damage resulting from the use or application of these products.

Any illustrations, charts, sample programs, and layout examples shown in this publication are intended solely for purposes of example. Since there are many variables and requirements associated with any particular installation, Quest Technical Solutions does not assume responsibility or liability (to include intellectual property liability) for actual use based upon the examples shown in this publication.

Throughout this manual we use notes to make you aware of safety considerations.

Identifies information about practices or circumstances that can lead to personal injury or death, property damage, or economic loss.

These warnings help to:

WARNING!

- identify a hazard
- avoid the hazard
- recognize the consequences

IMPORTANT!

Identifies information that is especially important for successful application and understanding of the product.

TIP

Identifies information that explains the best way to use the AN-X-MOD (Monitor)

Microsoft is a registered trademark of Microsoft Corporation.

Windows, Windows XP, Windows Vista and Windows 7 are trademarks of Microsoft Corporation.

ControlLogix, RSLogix and RSLogix 5000 are trademarks of the Allen-Bradley Company, Inc.



A product of Quest Technical Solutions
Sold and Supported by
ProSoft Technology Inc.
www.prosoft-technology.com



AN-X-MOD (MONITOR) MODULE OVERVIEW	2
Hardware Features	3
Package Contents	4
Modes of Operation	4
INSTALLATION	5
Prevent Electrostatic Discharge	5
Power	5
S908 Cabling and Termination	5
Ethernet Cabling	6
Software Installation	6
QUICK START	7
ETHERNET CONFIGURATION	8
Ethernet Configuration	8
Standalone Computer	13
Reconfiguring an AN-X from an Unknown State	18
S908 NETWORK CONFIGURATION	19
Autoconfiguration	19
Manual Configuration	22
Configuration File Format	23
Viewing the Current Configuration	25
Saving the Current Configuration	25
Supported Modicon Modules	25
EXCHANGING SCHEDULED DATA WITH A CONTROLLOGIX	26
Mapping I/O Data	26

Other Mappable Data	29
Viewing the Current Configuration	32
Saving the Current Configuration	33
Configuring the AN-X Module in RSLogix 5000	33
Input Only Connections	35
ControlLogix Tags	37
Using the ControlLogix Log	39
CONVERTING AN APPLICATION TO AN-X-MOD (MASTER)	40
USING ANXINIT	41
AnxInit Log	41
Locating Available AN-X Modules	42
Selecting an AN-X	43
Set AN-X IP Configuration	44
Restart an AN-X	45
AN-X Info	45
Read Kernel Parameters	46
Run Config Mode	47
Update AN-X Flash	47
Update Firmware	47
Firmware Update Wizard	48
Update Firmware Command	51
Patch Firmware	51
USING THE WEB INTERFACE	53
S908 I/O Network	54
Configure ControlLogix Support	56
View Configuration Files	57



View Active Configuration	57
Log Files	59
System Error Log	59
System Info Log	59
ControlLogix Log	59
View All Logs	59
Administration Menu	59
Browse File System	59
AN-X IP Configuration	60
Archive Configuration	61
TROUBLESHOOTING	62
LEDs	62
Ethernet LEDs	62
SYS LED	62
NET LED – Network Status	63
Logs	63
Diagnostic Counters	63
UPDATING THE FIRMWARE	64
Reading Version Numbers	64
SPECIFICATIONS	65
SUPPORT	66
WARRANTY	67

AN-X-MOD (Monitor) Module Overview



The AN-X-MOD (Monitor) communications module connects a ControlLogix PLC or other device to a Modicon S908 remote I/O network, over Ethernet.

The module monitors inputs and outputs on the S908 network. The module supports 800 series and Quantum remote drops. It supports up to 32 drops.

The module supports scheduled connections with a ControlLogix processor, over Ethernet, so the ControlLogix processor can read inputs and outputs from the Modicon network.

Both the S908 and ControlLogix configurations can be generated automatically by the AN-X from data captured from the S908 network.

The AN-X-MOD (Monitor) module has a web interface for configuration. You can communicate with the module using any standard web browser such as Internet Explorer.

The module firmware can be updated over Ethernet using the Windows utility supplied. Refer to page 64 for details.

As an Upgrade Tool

This module is primarily intended for users who are planning to upgrade a system from a Modicon controller to a ControlLogix with an AN-X-MOD (Master) acting as the master on the Modicon network. With an AN-X-MOD (Monitor), the ControlLogix can monitor live inputs and outputs on the existing system and compare the outputs from the replacement system to those from the existing system. When you are satisfied that the replacement system operates exactly like the existing system, you can install the upgrade.

The AN-X-MOD (Monitor) uses the same hardware as the AN-X-MOD (Master). You simply have to download different firmware using AnxInit (see page 47).

The I/O configuration file for the AN-X-MOD (Monitor) can be used to configure the AN-X-MOD (Master). The Ethernet/IP configuration is different for the two modules since data is mapped differently.

Hardware Features



The module has:

- LEDs to indicate the status of the connection to the Ethernet, the module's internal state, and state of the connection to the S908 remote I/O network
- an Ethernet connector
- a power connector
- an F connector to connect to the S908 network

Package Contents

- AN-X-MOD module
- CD containing software and documentation
- rubber feet for desktop use

Modes of Operation

There are three AN-X modes of operation:

- Boot mode. The AN-X is running its low level startup firmware.
- Configuration mode. This is the mode when you are updating the firmware in the AN-X.
- Production mode. This is the normal runtime mode of operation.



A product of Quest Technical Solutions
Sold and Supported by
ProSoft Technology Inc.
www.prosoft-technology.com



Installation

Prevent Electrostatic Discharge

The module is sensitive to electrostatic discharge.

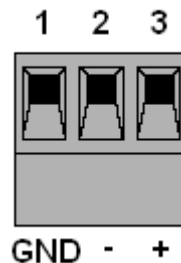
WARNING!

Electrostatic discharge can damage integrated circuits or semiconductors. Follow these guidelines when you handle the module:

- Touch a grounded object to discharge static potential
- Do not touch the connector pins

Power

AN-X requires a DC power input of anywhere from 12 to 24 VDC.



Left to right the pins on the power connector are chassis ground, negative voltage and positive voltage.

The chassis ground should be connected.

Power consumption is 200 mA @ 12VDC or 100 mA @ 24VDC.

The part number for the power connector is Phoenix MSTB 2.5/3-ST-5.08

S908 Cabling and Termination

The AN-X-MOD (Monitor) module does not transmit on the S908 network. It does not occupy a drop number on the network.

The module has a standard F connector for connection to the S908 remote I/O network.

Since the module monitors communication between other nodes on the network, it cannot be treated as just another node on the network. Normally the only consideration in adding a node to the S908 network is the attenuation of the signal from the PLC to the drop. However, AN-X-MOD (Monitor) must also see signals from other drops on the

network. A typical tap has a 14 dB drop from the network trunkline to the node so if the AN-X is connected as a node, there would be an immediate 28 dB drop in the signal from any other node on the network to the AN-X. Also bear in mind that the network cable attenuates the signal, typically 0.5 dB per 100 feet.

If possible the AN-X should be connected to the "trunk", not on a dropline. There are only two ends to the trunk, and the master will be on one end, so if possible put the AN-X-MOD (Monitor) on the other.

Ensure that the physical ends of the S908 remote I/O network are properly terminated. Both the AN-X and the Modicon controller have internal termination. Therefore, if they are at the physical ends of the network, there should not be other terminators on the network trunk.

The AN-X module does not connect the S908 cable to earth ground. If a connection to ground is required, use an F connector grounding block.

Ethernet Cabling

AN-X has a standard RJ-45 connector for connecting to Ethernet.

If you are connecting AN-X to an existing network through a router or switch, use a standard Ethernet cable.

If you are connecting directly between a computer and AN-X, use a crossover cable.

Software Installation

You must uninstall any previous version of the software before you can install a new version. Use the Windows Control Panel Add and Remove Programs to remove the old version.

Insert the CD supplied with the AN-X module and run the program setup.exe on the CD.



Quick Start

Step		See page
1	Install the AN-X Windows software	6
2	Power up the AN-X, connect it to Ethernet and use AnxInit to assign it an IP address and download the firmware	8
3	Connect AN-X to the Modicon S908 network	5
4	Use a web browser to connect to the the AN-X web interface and use it to autoconfigure the Modicon network and ControlLogix configuration	19
5	Select <i>Automation Network/S908 I/O Network Configuration</i>	19
6	Click <i>Clear Heard Configuration</i> and then return to configuration page	
7	Stop and start the Modicon controller	
8	Select whether the AN-X should generate the ControlLogix configuration as well as the S908 configuration.	
9	Click <i>Auto-configure network</i> . You should see a list of the Modicon modules and their locations on the S908 network. If you selected ControlLogix configuration, you should also see the CLX configuration it generated	
10	Configure the AN-X in RSLogix 5000	33
11	Read inputs and outputs from the S908 network	
12	Use the web interface to create tags for RSLogix 5000	37
13	Import the tags into RSLogix 5000	38
14	Use the tags to access data	



Ethernet Configuration

The AN-X-MOD (Monitor) module connects a computer or other device such as a ControlLogix processor on Ethernet to an S908 remote I/O network.

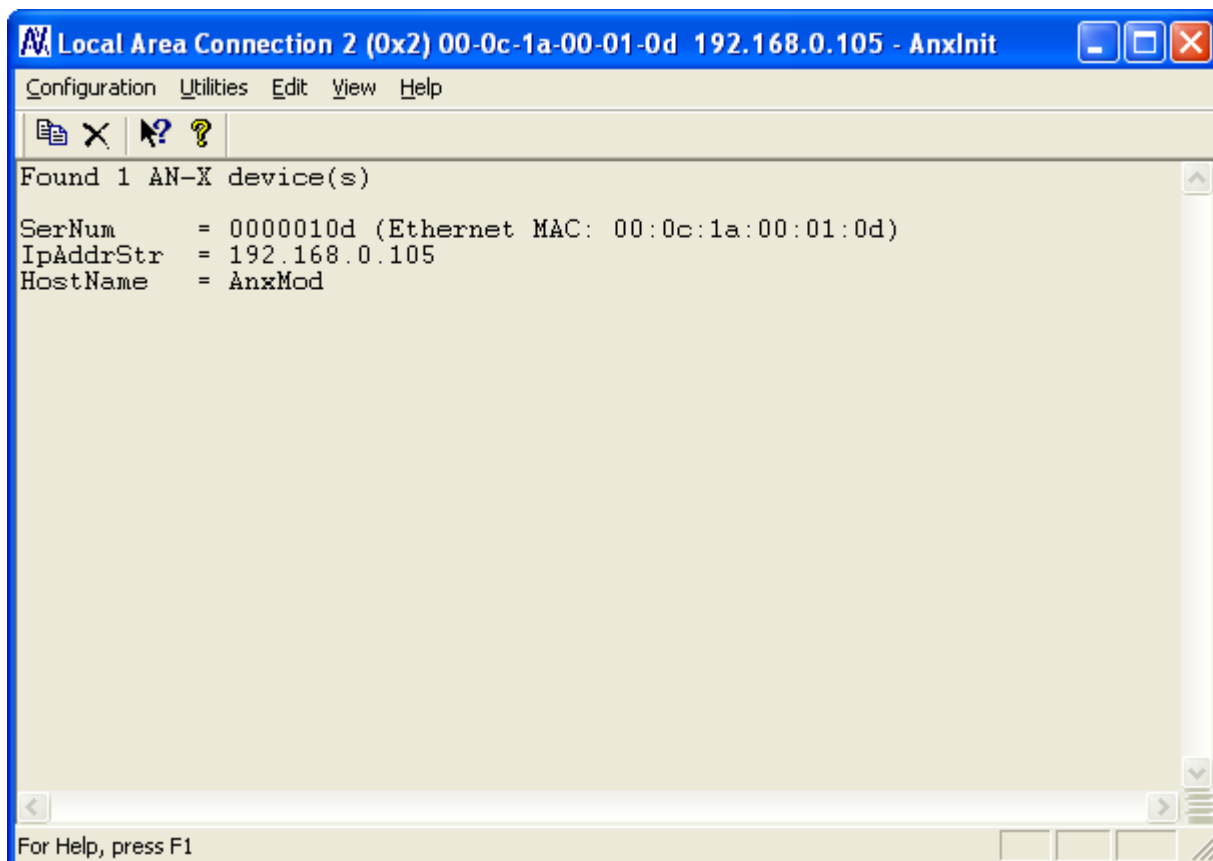
Before you can use the AN-X-MOD (Monitor), you must configure its network properties on Ethernet.

Ethernet Configuration

AN-X can be configured to use a static (unchanging) IP address or it can be configured to obtain its IP address from a DHCP server.

Unless you have control of the DHCP server, in most applications you will want to configure AN-X to use a static IP address. Otherwise the DHCP server may assign a different IP address each time AN-X powers up, and any software that accesses the AN-X module would have to be reconfigured.

AN-X is shipped with DHCP enabled. If it finds a DHCP server on the network, the DHCP server assigns it an IP address. You can use the utility AnxInit to find the IP address that the DHCP server has assigned. Select *Utilities/Locate All AN-X Modules* and AnxInit will locate the AN-X and display its IP address.



The screenshot shows a Windows-style window titled "Local Area Connection 2 (0x2) 00-0c-1a-00-01-0d 192.168.0.105 - AnxInit". The window has a menu bar with "Configuration", "Utilities", "Edit", "View", and "Help". Below the menu bar is a toolbar with icons for file operations and help. The main content area displays the following text:

```
Found 1 AN-X device(s)

SerNum      = 0000010d (Ethernet MAC: 00:0c:1a:00:01:0d)
IpAddrStr   = 192.168.0.105
HostName    = AnxMod
```

At the bottom of the window, there is a status bar that says "For Help, press F1".



If AN-X does not find a DHCP server within about three minutes of starting up, it reverts to a temporary static IP address of 192.168.0.41. If AN-X is using this temporary IP address, it repeatedly flashes the SYS LED red three times followed by a pause. If your computer is on the same subnet, you can use the web interface to change the IP address.

IMPORTANT!

Use this temporary IP address only for initial setup of AN-X. AN-X will not function for its intended purpose at the temporary IP address.

If you are using multiple AN-X modules, configure them one at a time, especially if there is no DHCP server on the network, since they will all revert to the same temporary IP address when they fail to find a DHCP server.

IMPORTANT!

If you are connecting AN-X to an existing Ethernet network, consult the network administrator to obtain a static IP address for AN-X and to obtain information about how you should configure AN-X.

IMPORTANT!

The AN-X must be on the local Ethernet (same subnet as your computer) when you set its IP address.

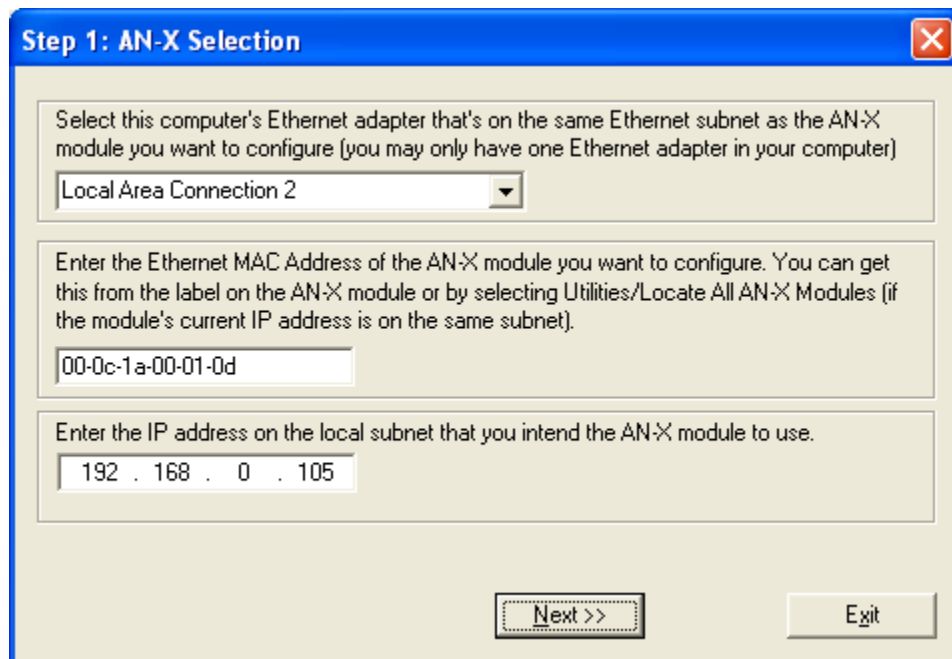
You configure the Ethernet properties using the Windows utility AnxInit supplied with AN-X or the AN-X web interface.

Use the *Configuration/AN-X IP Settings* command to start the AN-X IP configuration wizard, which takes you step by step through the IP configuration process.

Step 1

In step 1, you identify the AN-X you are configuring.





Step 1: AN-X Selection

Select this computer's Ethernet adapter that's on the same Ethernet subnet as the AN-X module you want to configure (you may only have one Ethernet adapter in your computer)

Local Area Connection 2

Enter the Ethernet MAC Address of the AN-X module you want to configure. You can get this from the label on the AN-X module or by selecting Utilities/Locate All AN-X Modules (if the module's current IP address is on the same subnet).

00-0c-1a-00-01-0d

Enter the IP address on the local subnet that you intend the AN-X module to use.

192 . 168 . 0 . 105

Next >> Exit

1. Select the Ethernet adapter that's connected to the AN-X. In most cases there will be just one Ethernet adapter in the computer. The AN-X must be on the same subnet as the computer.

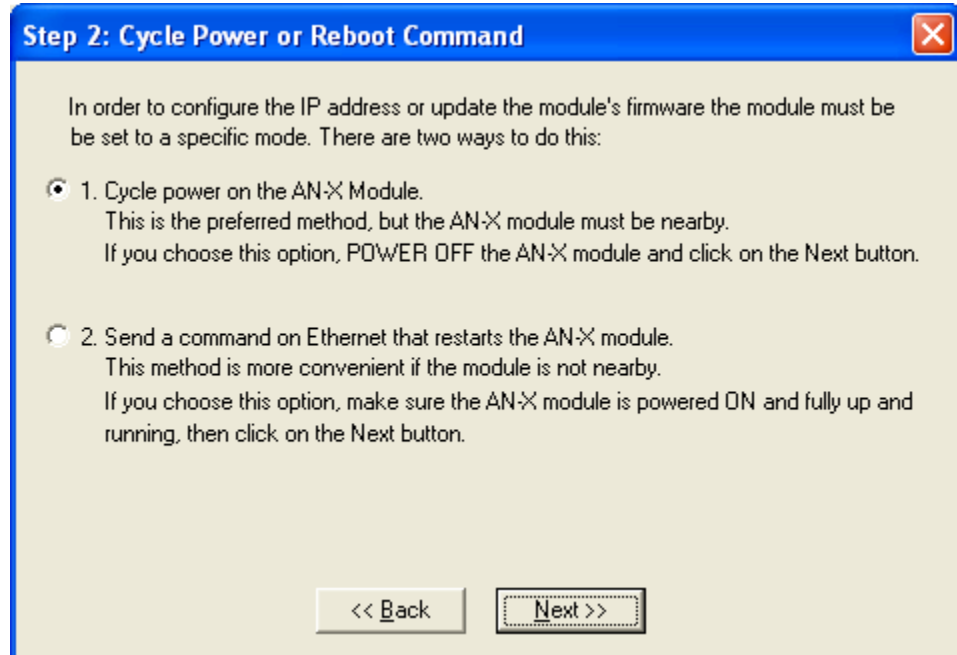
2. Enter the MAC address of the AN-X you are configuring. This is printed on the AN-X label. It consists of six pairs of hexadecimal digits, separated by hyphens. In the example above, it's 00-0c-1a-00-01-0d.

If the AN-X is already online, you can obtain its MAC address using the *Utilities/Locate All AN-X Modules* command.

3. Enter the IP address you intend the AN-X to use.

Step 2

In step 2, you choose a method of restarting AN-X to put it in boot mode.

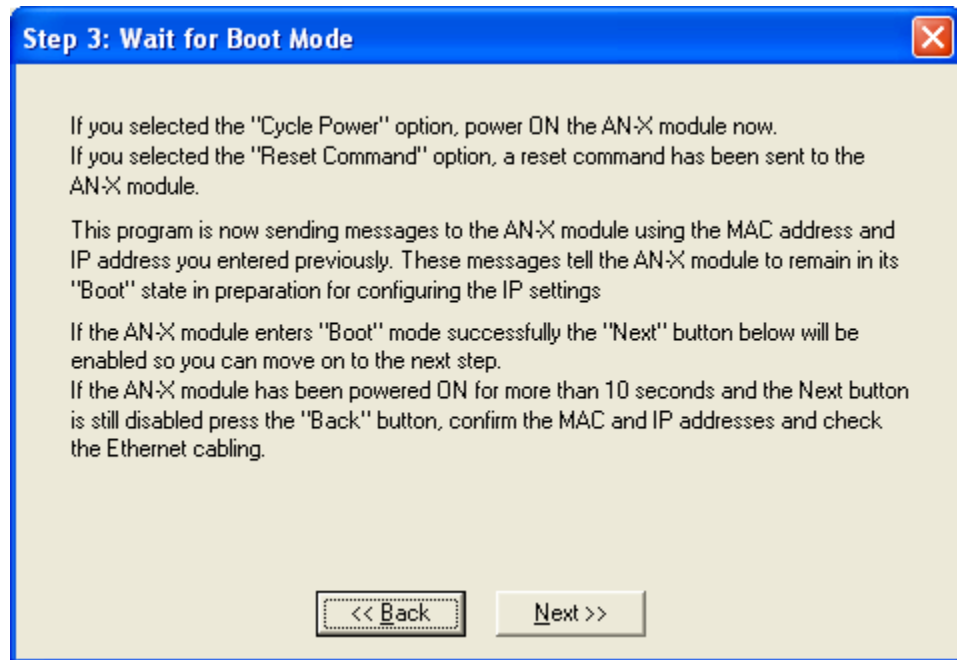


The preferred method is to cycle power on the AN-X. Select the first option on the screen and click the *Next >>* button.

An alternative method, useful if the AN-X is not easily accessible, is to send it a command over Ethernet. The AN-X must be powered on and completely running for this method to work. For example, if this is the first time you are configuring a new AN-X, allow sufficient time for it to acquire an IP address from a DHCP server or to time out and use its default IP address (about 3 minutes). Select the second option on the screen and click the *Next >>* button.

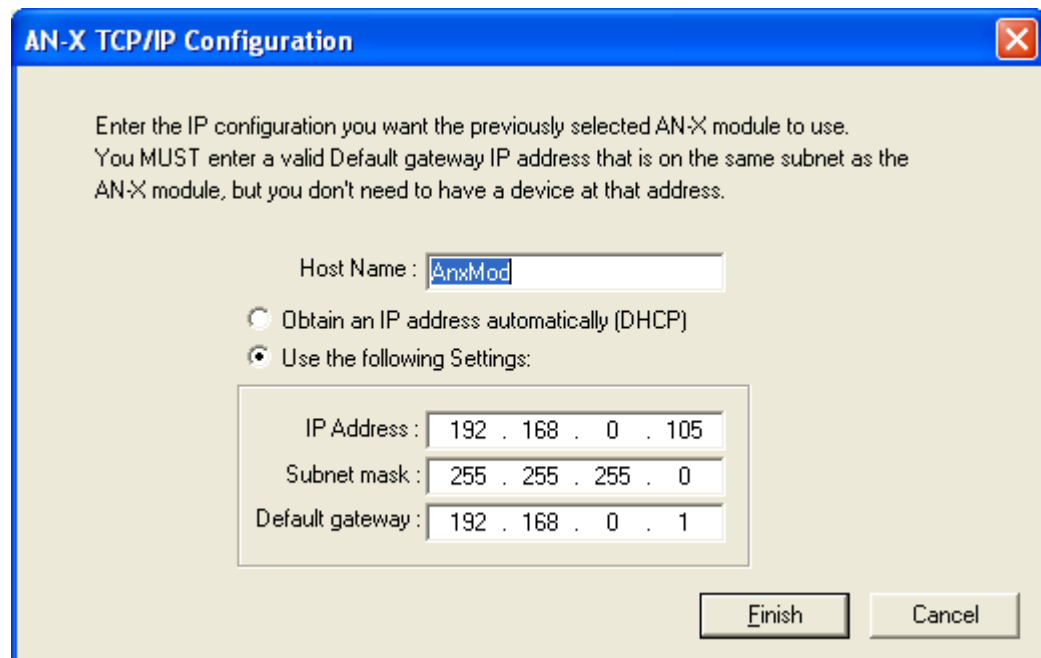
Step 3:

Wait for AN-X to enter boot mode. While AnxInit is waiting, the *Next>>* button is disabled. When AN-X is in boot mode, the *Next>>* button is enabled.



If the AN-X does not enter boot mode within about 10 seconds, return to the previous screens and check the entries.

The *AN-X TCP/IP Configuration* dialog appears.



Enter a *Host Name* for the AN-X. AN-X uses this name when it creates tags, so give the AN-X a meaningful name that is unique on your

network. This name is also used internally by AN-X and may be used to identify the AN-X if you have a DNS server on your network. The name can be from 1 to 31 characters long.

To configure the AN-X to obtain its IP address from a DHCP server on the network, select *Obtain an IP address automatically (DHCP)*

To configure the AN-X to use a static IP address, select *Use the following Settings* and enter:

- the desired IP address for the AN-X.
- the Subnet mask for the AN-X
- the default gateway for your network.

You must enter a default gateway address that is valid for the subnet, even if there is no device at the gateway address on the network.

Click OK to complete the configuration.

If you click *Cancel*, AN-X is left running the boot code. Use the *Utilities/Restart AN-X* command to restart the AN-X in production mode.

Standalone Computer

Since you are connecting directly from the computer to AN-X, use a crossover Ethernet cable.

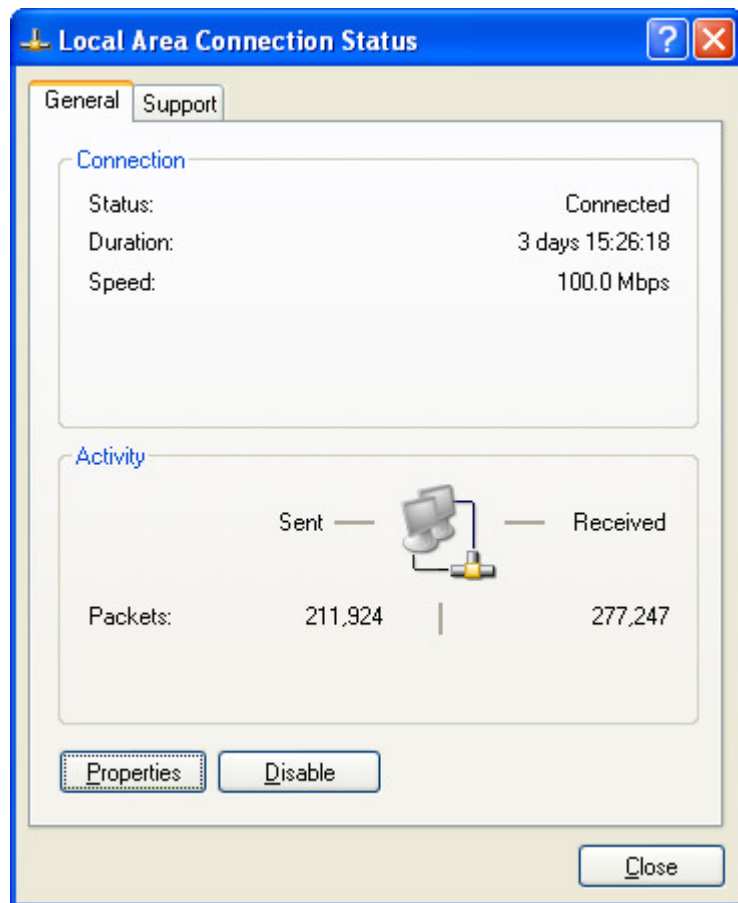
The following instructions assume Windows XP. They also assume that an Ethernet network card has been installed in the computer and that AnxInit has been installed on the computer.

TIP

The parameters in this example will work when you set up any standalone computer to work with AN-X.

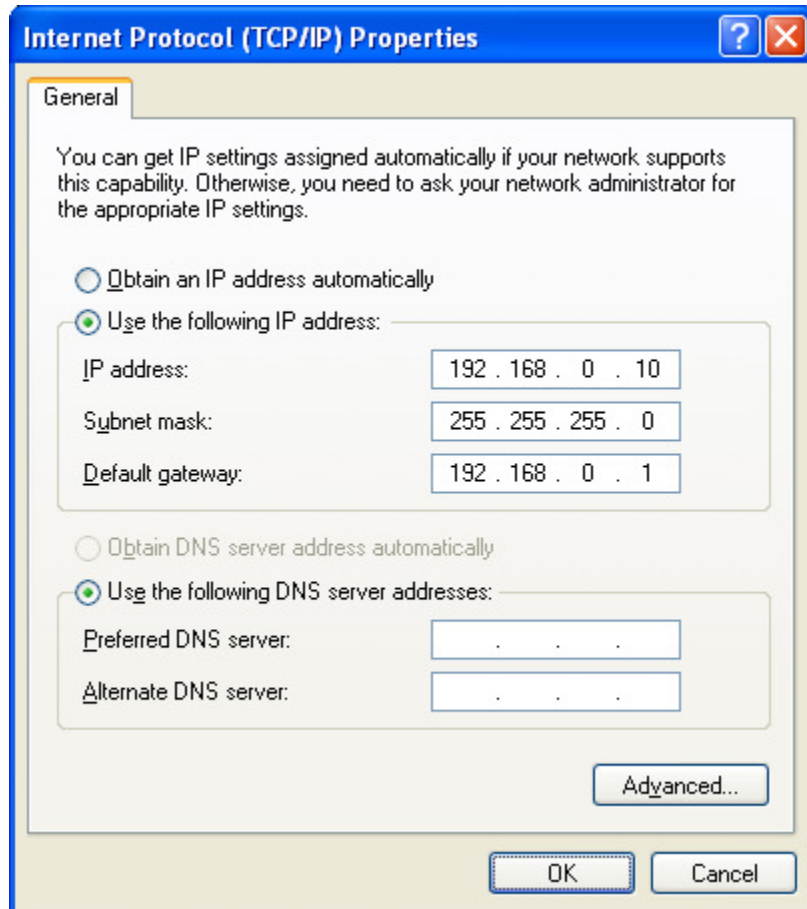
First configure the computer to use a static IP address. From the Control Panel, select *Network Connections*. Double click on *Local Area Connection* (or whatever connection is being used for the AN-X)





Click the *Properties* button.

Double click on *Internet Protocol (TCP/IP)*.



In this example, we assigned the computer an IP address of 192.168.0.10
 We set the Subnet mask to 255.255.255.0 (standard mask for the Class C network address of 192.168.0.x).

We set the Default gateway to 192.168.0.1 (this address does not exist on the Ethernet network but AN-X requires a valid default gateway entry).

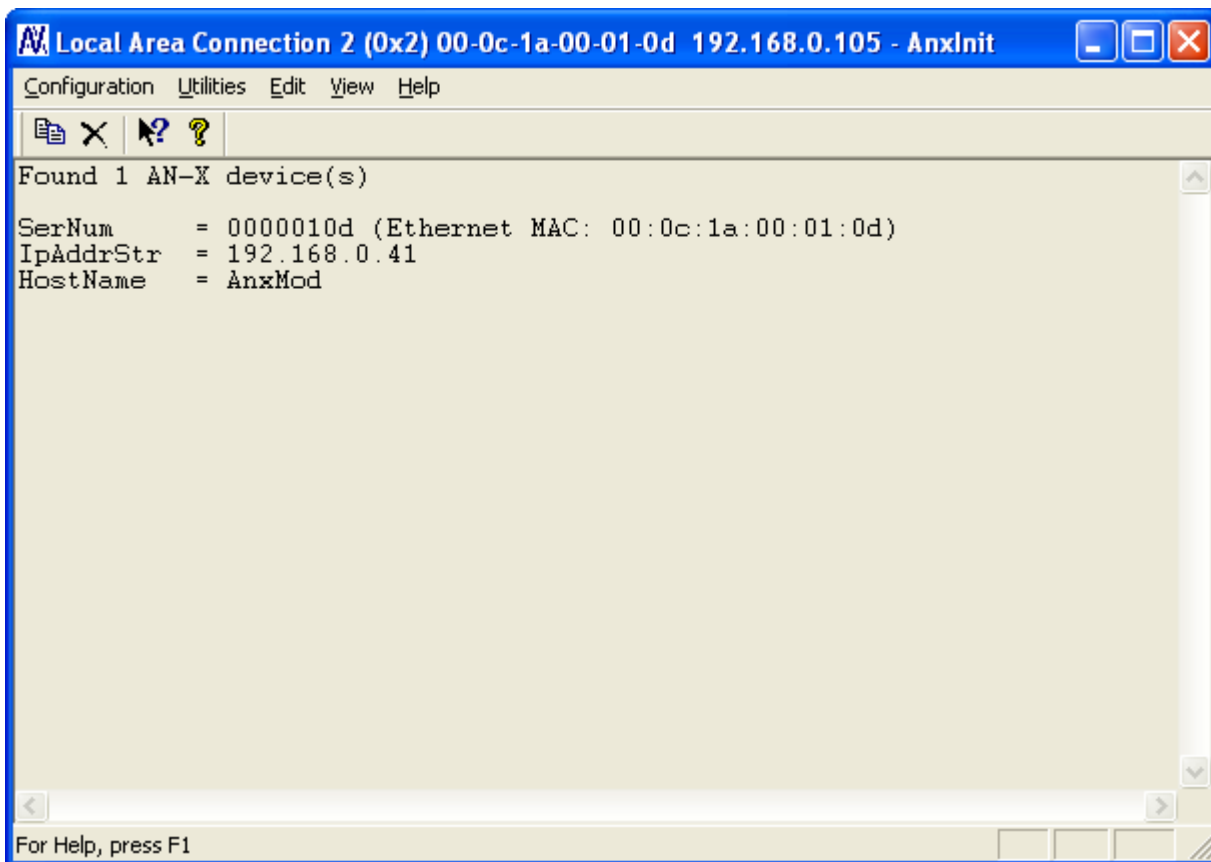
Click OK to accept the settings

Connect the computer to AN-X using the crossover cable.

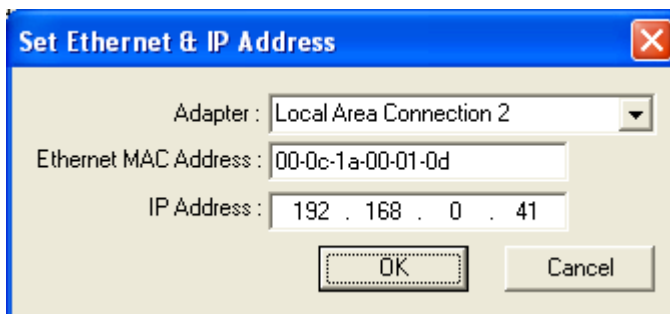
If this is the first time you have used the AN-X module, it will look for a DHCP server on the network. It waits about three minutes, then reverts to a default IP address of 192.168.0.41

Power up the AN-X and wait for the search for a DHCP server to time out. When the search for a DHCP server times out, AN-X repeatedly flashes the SYS LED red three times followed by a pause.

Run AnxInit. Select *Utilities/Locate All AN-X Modules* and confirm that it finds the AN-X.



Select *Utilities/Select An AN-X* and enter the MAC Address and IP address.



Click *OK* to accept the setting.

Select *Utilities/AN-X IP Configuration*.

AN-X TCP/IP Configuration

Enter the IP configuration you want the previously selected AN-X module to use. You MUST enter a valid Default gateway IP address that is on the same subnet as the AN-X module, but you don't need to have a device at that address.

Host Name : AnxMod

Obtain an IP address automatically (DHCP)

Use the following Settings:

IP Address : 192 . 168 . 0 . 105

Subnet mask : 255 . 255 . 255 . 0

Default gateway : 192 . 168 . 0 . 1

Finish Cancel

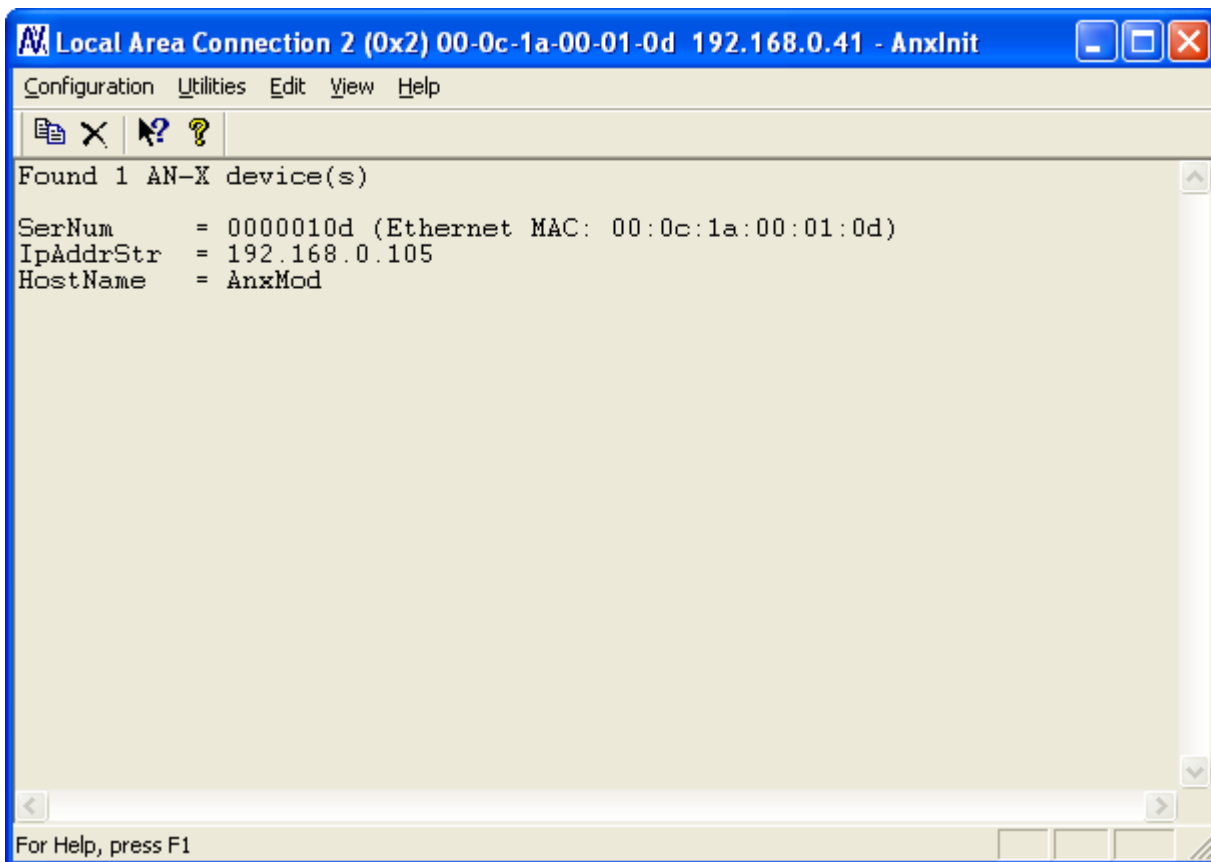
Enter an IP Address. In this case we chose 192.168.0.105

Enter the same Subnet mask and Default gateway that you entered for the computer. The default gateway address does not exist on the network but AN-X requires that the field have a valid entry.

Click *Finish* to accept the settings.

Select *Utilities/Restart AN-X* to restart AN-X with the new parameters.

When the AN-X has restarted (SYS LED is solid green), select *Utilities/Locate All AN-X Modules* and confirm that the AN-X is found with the new parameters.



Reconfiguring an AN-X from an Unknown State

It sometimes happens that an AN-X has been previously configured with an IP address that causes it to be inaccessible on the current Ethernet network. To reconfigure it to a known state, run the command *Configuration/AN-X IP Settings* to start the AN-X IP Configuration Wizard and reconfigure AN-X.



S908 Network Configuration

Before you can monitor a Modicon S908 remote I/O network, you must configure the network in the AN-X-MOD (Monitor).

There are two methods of configuring the S908 remote I/O that the AN-X-MOD (Monitor) is to monitor:

- autoconfiguration. The AN-X-MOD (Monitor) reads the network contents by capturing configuration frames from the master to drops on the network.
- manual configuration. You build a configuration file and send it to the AN-X-MOD (Monitor).

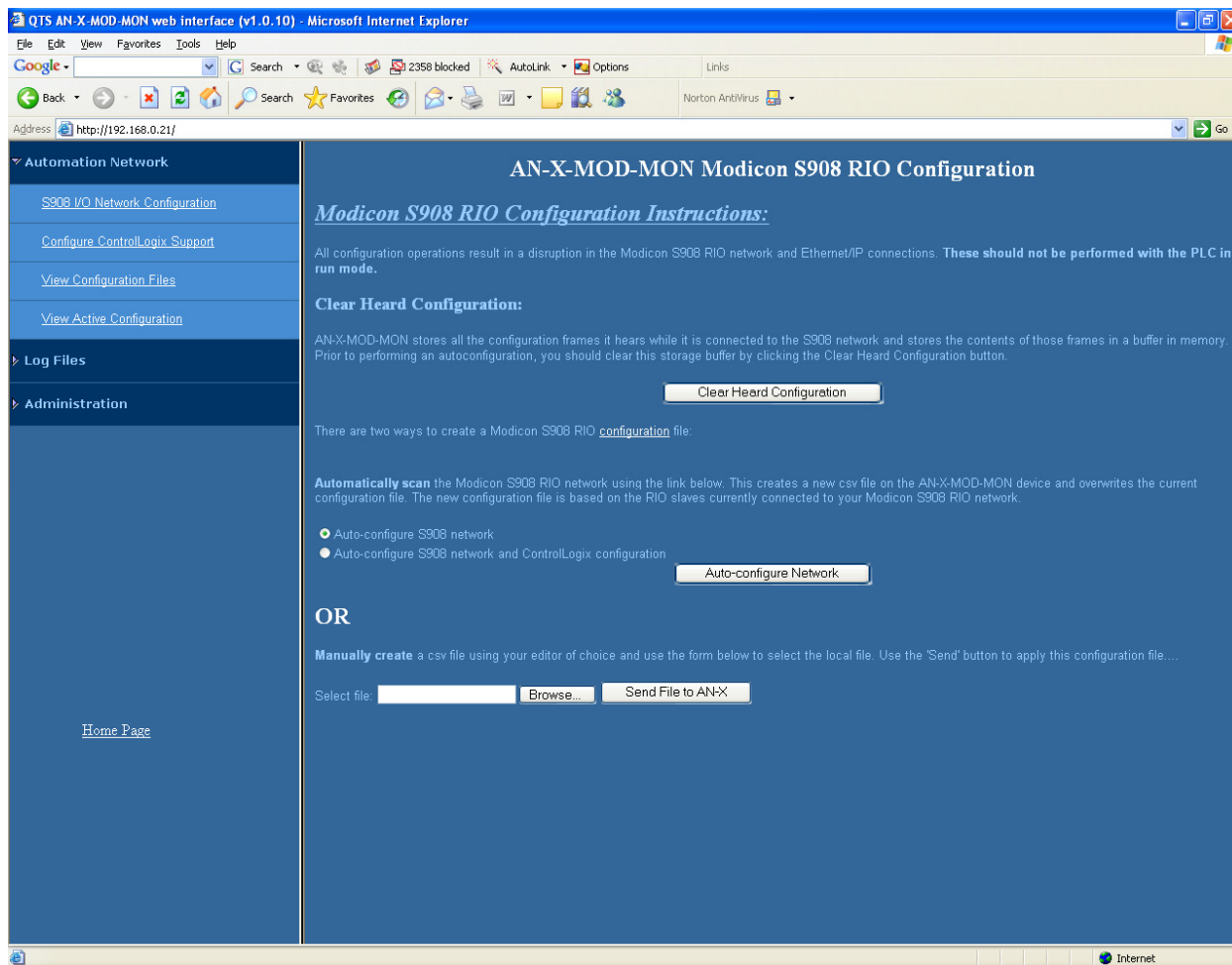
You can also use autoconfiguration to build an initial configuration file, edit the file, then perform a manual configuration with the modified file.

Autoconfiguration

Before you can perform an autoconfiguration, the S908 remote I/O network must be connected to the AN-X.

From the AN-X web interface, select *Automation Network/S908 I/O Network Configuration*.





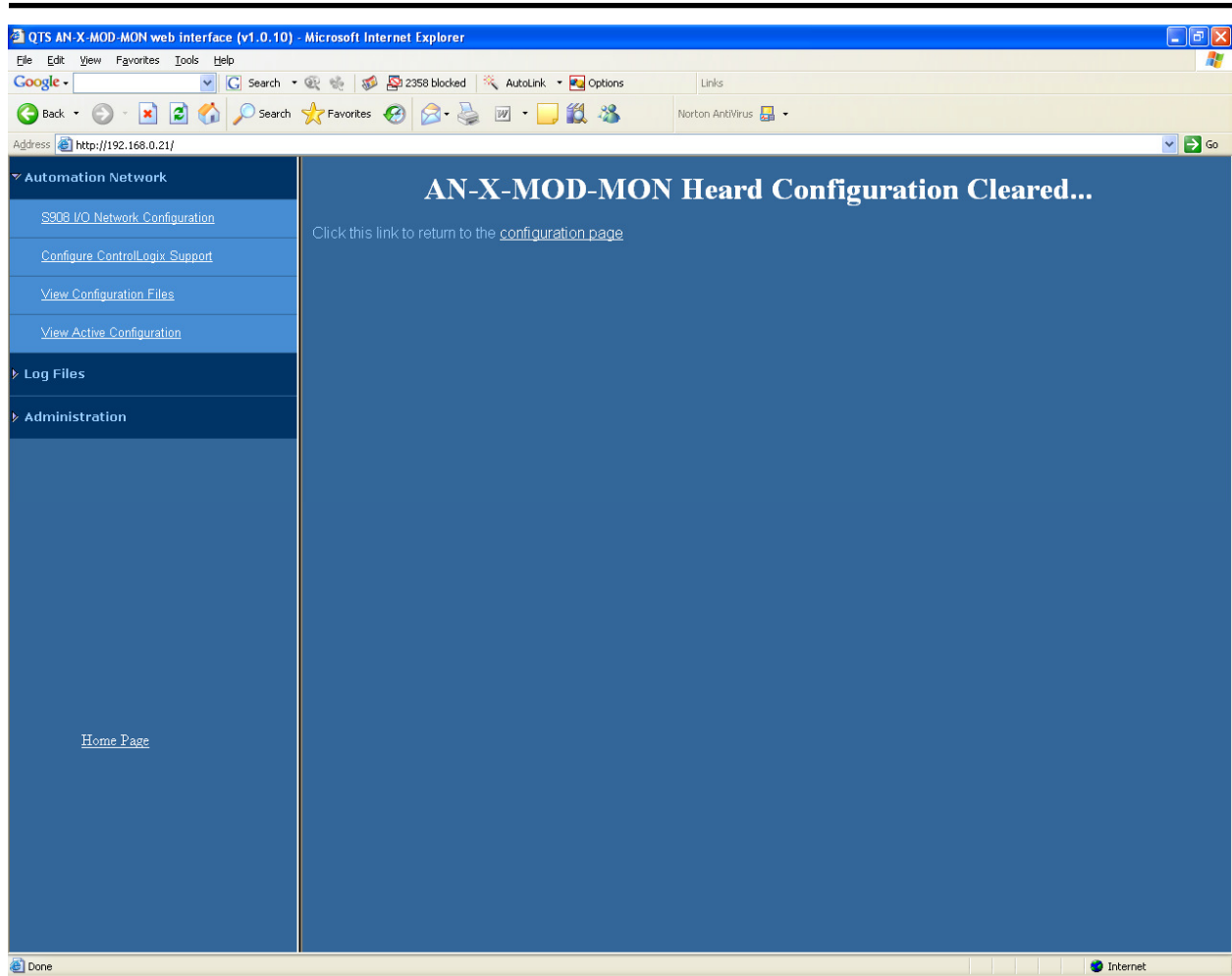
Before you autoconfigure the AN-X, clear the previously captured configuration frames by clicking *Clear Heard Configuration*.

When AN-X has cleared the buffer, it displays this page.



A product of Quest Technical Solutions
Sold and Supported by
ProSoft Technology Inc.
www.prosoft-technology.com





Click the *configuration page* link to return to the main RIO Configuration page.

AN-X can generate a default ControlLogix data mapping configuration (see page 26). If you want AN-X to generate the ControlLogix configuration, check *Auto-configure S908 network and ControlLogix configuration*. Otherwise, check *Auto-configure S908 network* (the default).

Stop and start the Modicon controller to force it to send out configuration frames on the S908 network.

Click the *Auto-configure Network* button.

AN-X then uses the configuration frames it captured to build a configuration file and displays the configuration it generated.

Example:

Drop=4,;StsOfs=57

,,Slot=1,Type=CPS_114_xx,;Addr=d4s1,Inp=00,Out=00,AC PS 115/230V 10A,;
InpLen=0,InpCfg=00,InpRef=1,OutLen=0,OutCfg=00,OutRef=1



A product of Quest Technical Solutions
Sold and Supported by
ProSoft Technology Inc.
www.prosoft-technology.com



```

,,Slot=2,Type=CRA_93x_00,;Addr=d4s2,Inp=00,Out=00,RIO DROP S908,;
InpLen=0,InpCfg=00,InpRef=1,OutLen=0,OutCfg=00,OutRef=1

,,Slot=3,Type=DDI_353_00,;Addr=d4s3,Inp=04,Out=00,DC IN 24V 4x8,;
InpLen=4,InpCfg=a0,InpRef=1,OutLen=0,OutCfg=00,OutRef=1

,,Slot=4,Type=DDO_353_00,;Addr=d4s4,Inp=00,Out=04,DC OUT 24V 4x8,;
InpLen=0,InpCfg=00,InpRef=1,OutLen=4,OutCfg=a0,OutRef=1

,,,,CfgLen=2,0x0000,0x0000

,,Slot=5,Type=ACI_030_00,;Addr=d4s5,Inp=18,Out=00,AN IN 8CH UNIPOLAR,;
InpLen=18,InpCfg=00,InpRef=1,OutLen=0,OutCfg=00,OutRef=1

,,,,CfgLen=1,0x0001

,,Slot=6,Type=ACO_020_00,;Addr=d4s6,Inp=00,Out=08,AN OUT 4CH CURR,;
InpLen=0,InpCfg=00,InpRef=10,OutLen=8,OutCfg=20,OutRef=1

,,,,CfgLen=6,0x8001,0x5555,0x0000,0x0000,0x0000,0x0000

EndDrop

```

Drop=5,

```

,,Slot=2,Type=B810,;Addr=d5s2,Inp=00,Out=01,8-OUT ISO B810,;
InpLen=0,OutLen=1

,,OutPad=1,

,,Slot=3,Type=B804,;Addr=d5s3,Inp=00,Out=02,16-OUT B804,;
InpLen=0,OutLen=2

,,Slot=4,Type=B863,;Addr=d5s4,Inp=08,Out=00,REG 4 CH IN B863,;
InpLen=8,OutLen=0

EndDrop

```

When AN-X creates a configuration file, it includes comments in the file based on the information in its module database. If you modify the automatically generated configuration file, remember to edit the comments as well.

See page 25 for information on how to upload the configuration from AN-X and save it to a file.

Manual Configuration

Manual configuration is useful when the Modicon network is not attached to the AN-X or when you need something other than the default configuration.

Create the configuration file using a text editor or a spreadsheet such as Excel and save it as a comma separated variable (CSV) file, with extension *csv*. The file format is described on page 23.



To send the configuration to AN-X:

1. From the AN-X web interface, select *Automation Network/S908 I/O Network Configuration*.
2. Type or browse the configuration file name into the *Select file:* area
3. Click the *Send To AN-X* button to send the file to AN-X.

AN-X parses the file and shows either the current configuration if configuration was sent successfully or an error message if there was a problem with the file.

Configuration File Format

The remote I/O configuration file defines the contents of the drops to be monitored on the S908 network.

It is a comma-separated variable (csv) text file, which can be created with a text editor or with a spreadsheet such as Excel.

Anything after a semicolon on a line is treated as a comment. Comments can be inserted at the end of a line or on a separate line.

Begin a drop definition with a line that consists of the keyword Drop, followed by an equals sign and then the drop number, from 1 to 32. There should be no spaces before or after the equals sign.

Example:

```
Drop=7
```

End the drop definition with a line with just the keyword EndDrop.

Between the Drop and EndDrop lines, enter the rack and slot definitions for the drop.

Begin a rack definition with a line that consists of the keyword Rack, followed by an equals sign and then the rack number, from 1 to 5. There should be no spaces before or after the equals sign.

Example:

```
Rack=1
```

After the rack definition, enter the slot definitions. They consist of the keyword Slot, followed by an equals sign and the slot number, a comma, then the keyword Type, an equals sign, and the module type. There should be no spaces before or after the equals signs.

Examples:

```
Slot=4,Type=B804
```

```
Slot=7,Type=ACI_030_00
```



For rack 1, the rack definition line can be omitted. It is required for racks 2 to 5. If there is no explicit Rack definition, AN-X assumes the subsequent slot definitions are for rack 1.

There is no EndRack command. If there is more than one rack in a drop, start the new rack with a Rack definition.

Quantum Parameter Data

Some Quantum modules have additional parameters to define configurable properties of the module.

When the AN-X-MOD-MOD generates a file as a result of an autoconfiguration, it adds the parameter data the master sent to each module.

The parameter data is added on a line after the slot definition. It contains the length of the parameter data in words, followed by the parameter data.

Example:

```
Slot=6,Type=ACO_020_00
```

```
CfgLen=6,0x8001,0x5555,0x0000,0x0000,0x0000,0x0000
```

The leading 0x indicates a hexadecimal number.

The AN-X-MOD (Monitor) does not use the parameter data but if you use the configuration file to configure an AN-X-MOD (Master) module, it sends the same initial parameter data that the monitored control system sent.

Refer to the document *AN-X-MOD-Parameters* supplied with the AN-X for detailed information about parameters for specific Quantum modules.

Pad Modules

Modicon processors sometimes add padding modules to configurations containing 8-bit 800 series input or output modules. They are shown as InpPad or OutPad in the file generated by the autoconfiguration.

Sample RIO Configuration File

In this example, drop 1 is an 800 series drop and drop 2 is a Quantum drop.

```
Drop=1
```

```
Rack=1
```

```
Slot=4, Type=B804
```

```
Slot=5, Type=B805
```



Rack=2
Slot=4, Type=B888
EndDrop

Drop=2
Rack=1
Slot=4, Type= DAI_353_00
Slot=7, Type= DAO_840_00
EndDrop

Viewing the Current Configuration

To view the S908 remote I/O configuration currently in AN-X, access the web interface and select *Automation Network/View Active Configuration*.

You can also view the configuration file by accessing the web interface and selecting *Automation Network/View Configuration Files*. Click on the *AN-X-MOD-MON S908 Network Configuration File* link and select Open to open the file in whatever application is associated with CSV files on your computer, usually a spreadsheet or a text editor.

Saving the Current Configuration

To save the configuration currently in AN-X to a file, access the web interface and select *Automation Network/View Configuration Files*.

Right click on the *AN-X-MOD S908 Network Configuration File* link and save the file.

Supported Modicon Modules

When you perform an autoconfiguration, AN-X appends a list of supported modules to the end of the file. To view a list of supported modules, autoconfigure AN-X and view the current configuration.



Exchanging Scheduled Data with a ControlLogix

A Modicon S908 remote I/O network can contain up to 2048 words of input data and 2048 words of output data (32 drops x 64 words each per drop).

Each scheduled connection with a ControlLogix contains at most 250 words of input data and 248 words of output data. In order to be able to monitor large Modicon networks, the AN-X-MOD (Monitor) module supports multiple scheduled connections with a ControlLogix processor over Ethernet. All but the very largest configurations can be mapped into a single AN-X-MOD (Monitor) module.

The AN-X-MOD (Monitor) module emulates a 17-slot ControlLogix rack with an ENBT/A module in slot 16 and generic modules in slots 0 to 15.

A ControlLogix processor can open a scheduled connection to each of these 16 generic modules. Each scheduled connection consists of up to 250 words of input data from the AN-X to the ControlLogix processor. The minimum output size in RSLogix 5000 is 1.

Each connection can have its own RPI, from 5 to 750 ms.

In general, you should try to keep the number of connections small. There is significant overhead in opening and maintaining each connection.

You map the inputs and outputs for the Modicon I/O modules on the S908 network to the input data for these scheduled connections. AN-X can create the mappings automatically or you can create a mapping configuration manually.

You can also have AN-X create the mapping file automatically, then modify the file to better suit your application. For example, in order to make the most efficient use of the available Ethernet bandwidth, you can organize the data so that items that must update quickly are mapped to connections with short RPIs and items that are less time-critical are mapped to connections with longer RPIs.

In addition, the AN-X module has diagnostic data that can be mapped to ControlLogix scheduled input data.

The mapping file can also contain options that apply to the entire configuration.

Anything after a semicolon on a line is treated as a comment.

Mapping I/O Data

You map Modicon input and output data to the ControlLogix scheduled input data by creating a comma separated variable file that defines the mappings.



Usually AN-X creates the ControlLogix configuration when you perform an autoconfiguration of the S908 network. Look at the configuration file it creates to determine the number of connections you will need in the ControlLogix. Each connection begins with a ClxSlot line in the configuration file.

The file consists of sections for each scheduled connection. Within each scheduled connection there are definitions for the input data for that connection that refer to the Modicon module (drop, rack and slot) where the data is to be found and whether input or output data is being mapped.

When you create a mapping for a module, all the input or output data for the module is mapped; you cannot map individual registers.

AN-X can automatically create a default mapping file when you autoconfigure I/O. See page 19 for details.

ClxName

The first line in the file identifies the AN-X module. AN-X uses this name in the ControlLogix alias tags it creates for the Modicon data. The ClxName definition consists of a line with the keyword ClxName, followed by a comma and the name you gave the emulated ENBT (see page 33)

Example:

```
ClxName, AnxMod
```

When AN-X automatically creates a configuration file, it uses the Ethernet host name as the default ClxName.

ClxPrefixes

There are two prefixes which are used in the tagnames AN-X creates for import into RSLogix 5000. AN-X prefixes each tagname for input and diagnostic data with the ClxPrefix. AN-X prefixes each tagname for output data with the ClxPrefixOut.

The prefixes can be used to distinguish tags for the same Modicon address when the ControlLogix processor has connections to more than one AN-X-MOD (Monitor).

For example, if the ControlLogix has connections to two AN-X-MOD (Monitor) modules, each monitoring a different Modicon network, both networks could have a module with the same drop and slot address. Using a different ClxPrefix in the configuration file for each AN-X-MOD (Monitor) makes the tagnames for the two I/O modules distinct.

The ClxPrefix consists of a line with the keyword ClxPrefix, followed by a comma and the prefix text.



Example:

```
ClxPrefix,MOD_
```

The ClxPrefixOut consists of a line with the keyword ClxPrefixOut, followed by a comma and the prefix text.

Example:

```
ClxPrefixOut,MOD_MONOUT_
```

The ClxPrefixOut can be used to distinguish monitored outputs and control outputs when an existing control system is being replaced.

Scheduled Connection Data

Each scheduled connection to the AN-X begins with a line that consists of the keyword ClxSlot followed by a comma and then a number from 0 to 15

Example:

```
ClxSlot, 0
```

Each scheduled connection contains input data.

There are no scheduled outputs from the ControlLogix processor.

Scheduled inputs to the ControlLogix processor for that connection begin with a line with just the keyword DataInput.

Data definitions consist of lines that define the mapping between the ControlLogix data table, the Modicon I/O module location (drop, rack and slot), and whether input or output data is being mapped.

They consist of lines of the form

```
CLX_offset (optional), Modicon_Location, tagname
```

The CLX_offset is the offset into the data for the connection. You can select the offset where the data is located or you can leave it out and AN-X will automatically assign the offset.

The Modicon_location consists of an address in the form dxrysz where x is the drop number, from 1 to 32, y is the rack number, from 1 to 5, and s is the slot number, from 1 to 16.

If the rack number is 1, the explicit rack number (ry) can be omitted.

This is followed by an underscore and either Inp (input data) or Out (output data).

Example:

To map the input data from a Modicon module at address drop 4, rack 2, slot 4 to ControlLogix offset 27 and assign it tagname tag1

```
27, d4r2s4_Inp, tag1
```



Example:

To map the output data from a Modicon module at address drop 14, rack 1, slot 3 to the next available ControlLogix location and assign it tagname tag2

```
, d14r1s3_Out, tag2
```

or, since the rack number is 1, you can also use

```
, d14s3_Out, tag2
```

Example Configuration File:

```
ClxName, ANX
```

```
ClxPrefix,MOD_
```

```
ClxSlot, 0
```

```
DataInput
```

```
,d4s7_Inp, Drop4Slot7_Inputs
```

```
,d4s8_Out, Drop4Slot8_Outputs
```

Other Mappable Data

In addition to the I/O data, there are other items that can be mapped to connection input data.

For all these items, you can assign an offset for the data within the ControlLogix input data, or you can leave out the offset and let AN-X assign the offset automatically.

All items are of the form

```
offset [optional], ItemKeyword
```

If you create the ControlLogix configuration automatically when you autoconfigure the S908 network, these items are mapped by default to ClxSlot 15.

TIP

If you map the diagnostic data to a separate connection, use a long RPI to reduce the Ethernet traffic, since the diagnostics do not need to be updated as frequently as I/O data.

Diagnostic Counters

The AN-X-MOD (Monitor) maintains the following diagnostic counters.



Offset	Counter	Description
0	RxGood	Received frames with good status
1	RxInpMism	Size of input frame doesn't match expected size
2	RxOutMism	Size of output frame doesn't match expected size
3	RxNodeMism	Source for input or output mismatch Low byte is drop number High byte is length received
4	RxNoise	Received frames with a noise error
5	RxTout	No frame received in timeout period
6	RxCrc	Received frames with a CRC error
7	RxOvr	Received frames too long
8	RxAbort	Received frames with an abort error, started to receive a packet but it ended prematurely
9	RxShort	Received frames too short
10	RxPrctl	Received frames with a protocol error
11	RxErrMsk	Indicates the type of protocol error

To map the diagnostic counters, include a line with the keyword `DiagCtrs` in the input section of a connection. This maps all the diagnostic counters; they cannot be mapped individually.

Examples:

```
, DiagCtrs
```

```
10, DiagCtrs ; offset 10
```

Under normal circumstances, only the `RxGood` counter should be incrementing, although some of the other counters may have nonzero values because of errors in a few frames at startup.

Drop Error Table

The drop error table consists of 2 16-bit words, one bit per drop. Bit 0 of the first word corresponds to drop 1, bit 1 corresponds to drop 2, and so on.

If a configured drop is in error, the bit is 1. If a configured drop is responding correctly, the bit is 0. The bit is 0 for an unconfigured drop.



To map the drop error table, include a line with the keyword DropErr.

Examples:

```
, DropErr
```

```
10, DropErr ; offset 10
```

TIP

Map the drop error table to the first two words of input data of each connection. If the connection to the AN-X module is lost, the ControlLogix sets the first 2 words of the connection to FFFF hexadecimal. If your program is monitoring the drop error table, it will see the error bit as set.

Module Health Bits

Each Modicon drop returns 5 words of module health data. Each word corresponds to a rack – the first word corresponds to rack 1, the second corresponds to rack 2, and so on. Bits in the word correspond to a slot. The bit is 1 for a correctly functioning module and 0 otherwise.

To map the health bits for a given drop, include a line with the keyword ModnHlth, where n is the drop number, from 1 to 32, in the input section of a connection.

Example:

```
, Mod2Hlth
```

```
20, Mod2Hlth ; offset 20
```

Note: the module health bits do not update if the drop is offline or if the connection to the AN-X module is lost.

Quantum Module Status Data

Quantum modules each return a byte of module status data. Refer to the documentation for each module for details on what the module status contains for a specific module.

There are 8 words of module status data for each drop. The status byte for slot 1 is found in the low byte of the first word, the status byte for slot 1 is found in the high byte of the first word, and so on.

To map the module status data for a given Quantum drop, include a line with the keyword dnModSts, where n is the drop number, from 1 to 32, in the input section of a connection.

Examples:

```
,d4ModSts
```

```
30, d4ModSts ; offset 30
```



Connection Statistics

The module maintains statistics for each exclusive owner scheduled connection. In the following table, O represents the connection originator (ControlLogix) and T represents the connection target (AN-X).

There are 10 words of data for the connection:

Offset	Description
0	Average time for last 100 O=>T updates
1	Minimum time for last 100 O=>T updates
2	Maximum time for last 100 O=>T updates
3	Maximum O=>T time since connection opened
4	Reserved
5	Average time for last 100 T=>O updates
6	Minimum time for last 100 T=>O updates
7	Maximum time for last 100 T=>O updates
8	Maximum T=>O time since connection opened
9	Reserved

The units for the times are 0.1 milliseconds. A value of 87 means 8.7 ms.

To map the statistics for a given connection, include a line with the keyword ConnStatsn, where n is the connection number, from 0 to 15, in the input section of a connection.

Examples:

, ConnStats2

40, ConnStats2 ; offset 40

Viewing the Current Configuration

To view the ControlLogix configuration currently stored in the AN-X, start the web interface and select *View Active Configuration*.

Click the *Ethernet/IP* link to view the current ControlLogix scheduled data configuration. The configuration will be displayed using whatever application is associated with *.csv files on your computer, usually a spreadsheet or text editor.



Saving the Current Configuration

To save the ControlLogix configuration currently stored in the AN-X to a file, start the web interface and Select *View Active Configuration*.

Right click the *Ethernet/IP* link and select *Save target* to save the current ControlLogix scheduled data configuration to a file.

Configuring the AN-X Module in RSLogix 5000

To configure the AN-X-MOD (Monitor) in RSLogix 5000:

1. Right click on the ControlLogix Ethernet bridge module that will be communicating with the AN-X and select *Add Module*. Add a 1756-ENBT/A module. Set the Major Rev to 1.

Module Properties - LocalENBT:16 (1756-ENBT/A 1.1)

General | Connection | Module Info | Port Configuration | Port Diagnostics | Backplane

Type: 1756-ENBT/A 1756 10/100 Mbps Ethernet Bridge, Twisted-Pair Media
 Vendor: Allen-Bradley
 Parent: LocalENBT
 Name: AnxMod
 Description:
 Comm Format: None
 Slot: 16 Chassis Size: 17
 Revision: 1.1 Electronic Keying: Disable Keying

Address / Host Name
 IP Address: 192 . 168 . 0 . 105
 Host Name:

Status: Offline

OK Cancel Apply Help

Enter the Name. This is usually the host name you assigned to AN-X when you configured its IP properties.

Set the Slot to 16. Set the chassis size to 17.

Set the *Comm Format* to None.

Set the IP address to match the AN-X module.

Set *Electronic Keying* to *Disable Keying*.

Record the *Name* as it is used to create tags to access the data.

2. Add Generic modules for each required connection



Module Properties - ANXModMon:0 (1756-MODULE 1.1)

General | Connection | Module Info | Backplane

Type: 1756-MODULE Generic 1756 Module
Parent: ANXModMon

Name: MonSlot0
Description:
Comm Format: Data - INT
Slot: 0

Connection Parameters

Input	Assembly Instance	Size	Bit Width
1	1	250	(16-bit)
2	2	1	(16-bit)
Configuration	4	0	(8-bit)
Status Input			
Status Output			

Status: Offline

OK Cancel Apply Help

Set the parameters as shown. Set the Slot to 0 for the first connection, 1 for the second connection, and so on.

3. Set the RPI for each connection.

Module Properties - AnxMod:0 (1756-MODULE 1.1)

General | Connection | Module Info | Backplane

Requested Packet Interval (RPI): 10.0 ms (0.2 - 750.0 ms)

Inhibit Module

Major Fault On Controller If Connection Fails While in Run Mode

Module Fault

Status: Offline

OK Cancel Apply Help

IMPORTANT!

Ensure that any check box that refers to Unicast connections is unchecked.

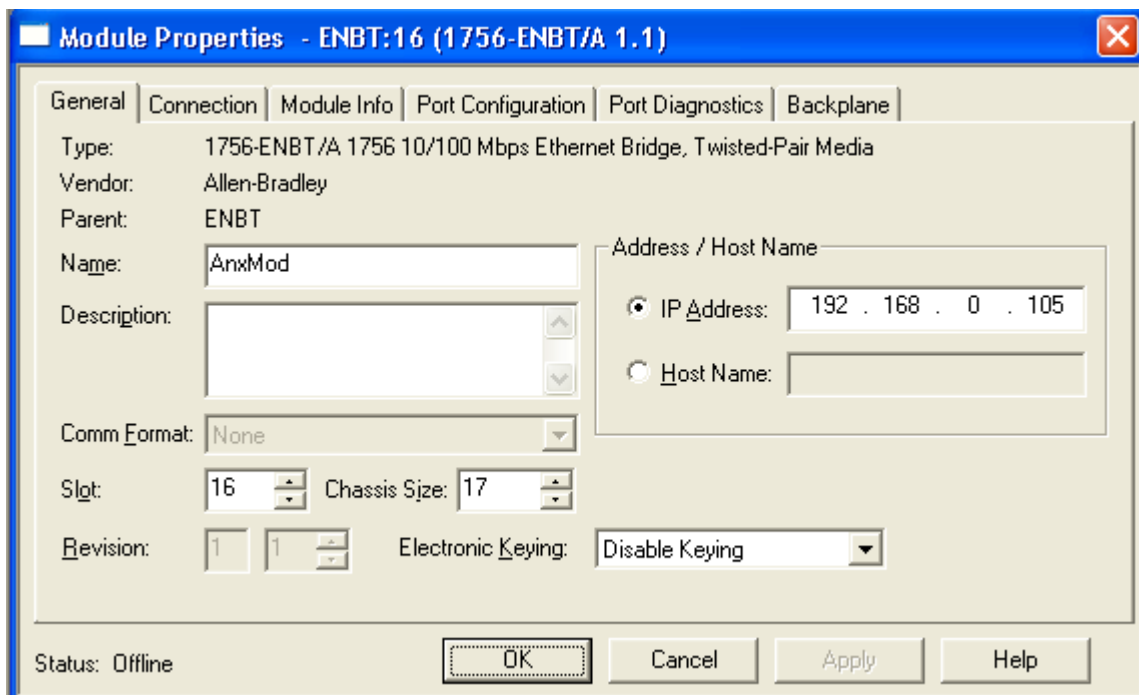
Input Only Connections

The AN-X-MOD (Monitor) supports one input only connection from a ControlLogix processor. The ControlLogix will be able to read the same input data as the ControlLogix processor with the exclusive owner connection to the AN-X-MOD (Monitor).

There must always be an exclusive owner connection to the generic module in slot 0 in order for the module to work correctly.

To configure the input only connection to the AN-X-MOD (Monitor) in RSLogix 5000:

1. Right click on the ControlLogix Ethernet module that will be communicating with the AN-X and select *Add Module*. Add a 1756-ENBT/A module. Set the Major Rev to 1.



Set the Slot to 16. Set the chassis size to 17.

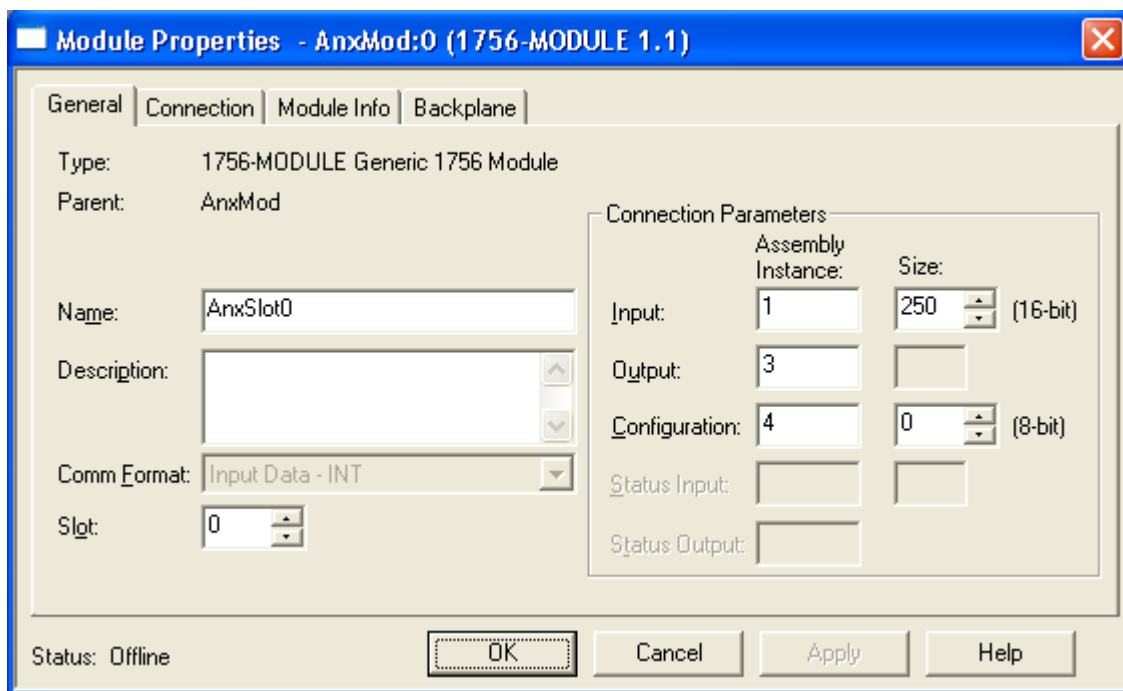
Set the *Comm Format* to None.

Set the IP address to match the AN-X module.

Set *Electronic Keying* to *Disable Keying*.

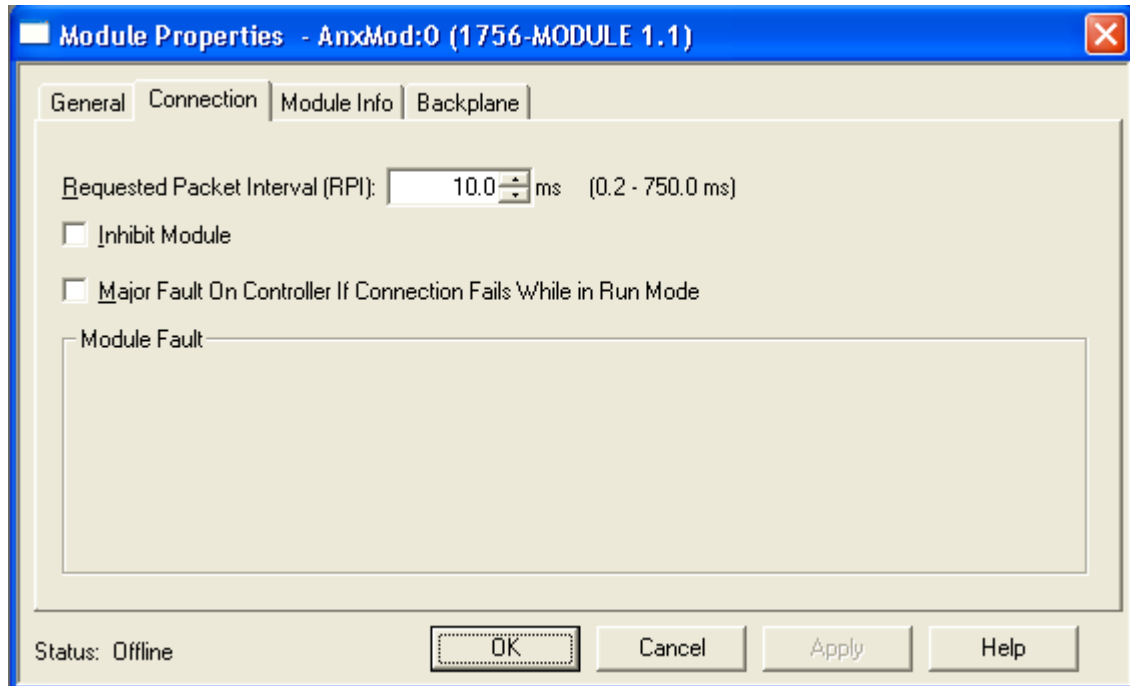
Record the *Name* as you will use it if you create tags to access the data.

2. Add Generic modules for each required connection



Set the parameters as shown. Set the Slot to 0 for the first connection, 1 for the second connection, and so on.

3. Set the RPI for each connection to match the RPI of the exclusive owner connection.

**IMPORTANT!**

Ensure that any check box that refers to Unicast connections is unchecked.

ControlLogix Tags

AN-X uses the Ethernet/IP configuration to create alias tags that can be imported into RSLogix 5000. Use these tags in your RSLogix 5000 program to access the data on the AN-X. Even if the ControlLogix address for a Modicon address changes, all you have to do is re-import the tags.

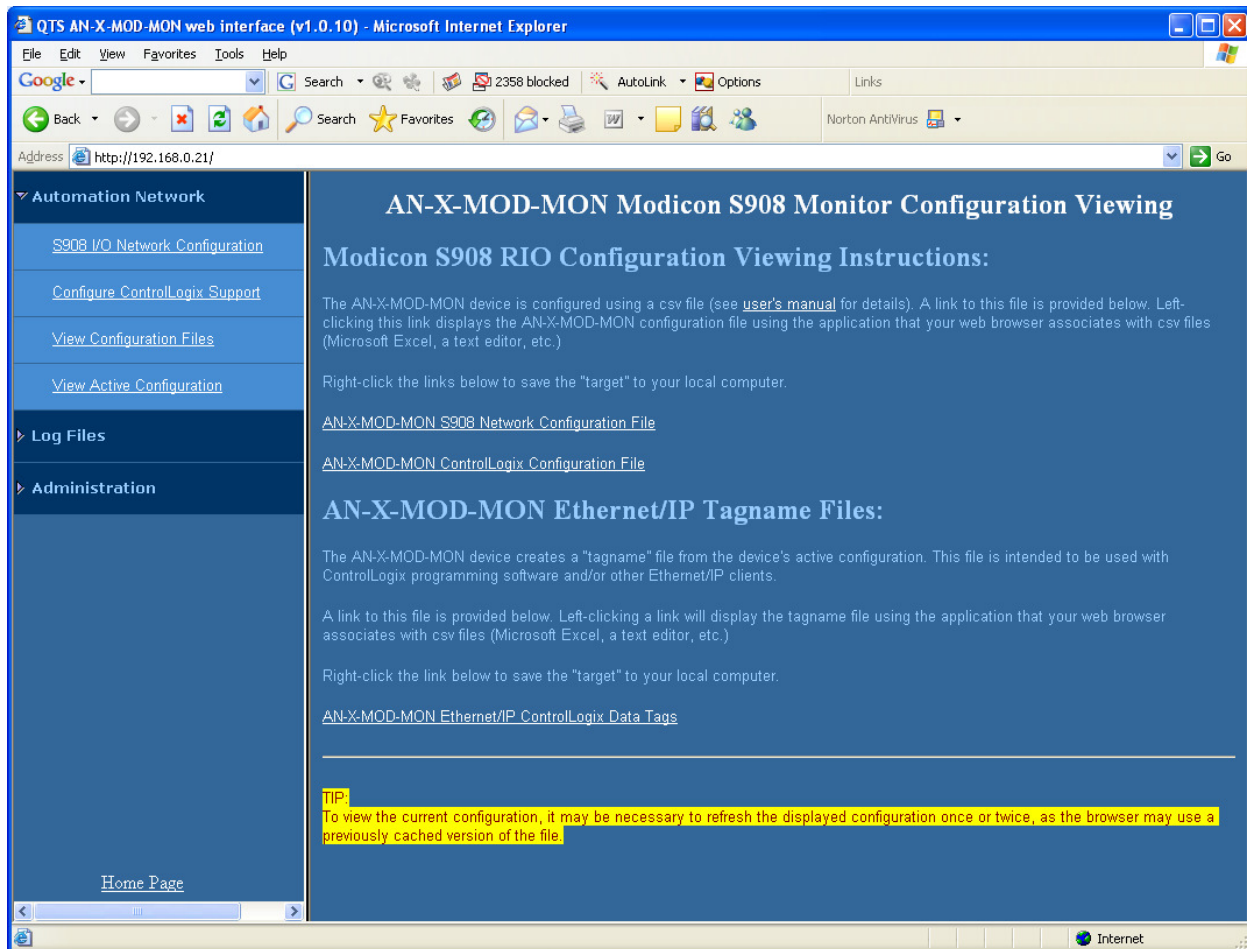
WARNING!

If you change the Modicon or ControlLogix configuration, re-import tags so that the ControlLogix processor is using the correct addresses.

In the web interface, select *Automation Network/View Configuration Files*.

To view the file, click *AN-X-MOD-MON Ethernet/IP ControlLogix Data Tags*.

To save the file to your computer, right click on the link and select *Save Target As...*



Importing Tags in RSLogix 5000

To import the tags into RSLogix 5000, you must be offline. Select *Tools/Import Tags* and import the tag file.

Tag Format

AN-X builds the tags from the ControlLogix configuration. Each tag is a ControlLogix alias. For example,

```
ALIAS,"","MOD_d05s4_Out","B804","","AnxMod:0:O.Data[0]"
```

The address is AnxMod:0:O.Data[0]. The address is made up of the ClxName and the data location.

In this example, the tag name is MOD_d05s4_Out. The name is made up of the ClxPrefix or the ClxPrefixOut and the tagname from the configuration file. If there is more than one word of data for the module, AN-X appends an underscore and a number to the tagname, for example

```
ALIAS,"","MOD_d05r4s4_Inp_0","B863","","AnxMod:0:I.Data[8]"
```

```
ALIAS,"","MOD_d05r4s4_Inp_1","B863","","AnxMod:0:I.Data[9]"
```



A product of Quest Technical Solutions
Sold and Supported by
ProSoft Technology Inc.
www.prosoft-technology.com



ALIAS,"","MOD_d05r4s4_Inp_2","B863","","AnxMod:0:l.Data[10]"

ALIAS,"","MOD_d05r4s4_Inp_3","B863","","AnxMod:0:l.Data[11]"

Using the ControlLogix Log

If there are problems with scheduled connections to the AN-X, use the ControlLogix log to identify the cause.

From the web interface, select *Log Files/ControlLogix Log* to display the log. Look for error messages that describe in detail the cause of any problem with the current configuration.



A product of Quest Technical Solutions
Sold and Supported by
ProSoft Technology Inc.
www.prosoft-technology.com



Converting an Application to AN-X-MOD (Master)

After you have used the AN-X-MOD (Monitor) to monitor an existing application, the next step is to replace the AN-X-MOD (Monitor) with the AN-X-MOD (Master).

It is recommended that you change the IP address of the AN-X when you convert it from monitor to master operation.

To convert the module, use AnxInit to download the AN-X-MOD-MAS (Master) firmware. Loading new firmware clears the configurations on the module. They must be reloaded or recreated.

The remote I/O configuration file used to configure the monitor should not require any changes to be used with the master.

However the Ethernet/IP file will be different. In the AN-X-MOD (Monitor), both input and output Modicon data is mapped to ControlLogix inputs. In the AN-X-MOD (Master), Modicon output data is mapped to ControlLogix output data.

The recommended procedure is to autoconfigure the AN-X-MOD (Master) module to create both remote I/O and Ethernet/IP files, then load the remote I/O configuration file from the monitor. That way, the remote I/O configuration will have the same parameter data as the original control system that the AN-X-MOD (Monitor) module monitored.



Using AnxInit

AnxInit is a Windows application supplied with AN-X to perform the following functions:

- Locate and identify AN-X modules on the Ethernet network
- Select a specific AN-X for configuration
- Set the IP address and other network parameters for an AN-X
- Restart an AN-X in production mode
- Display information about the selected AN-X
- Read the kernel parameters for the selected AN-X
- Update the flash (low level firmware) on the selected AN-X
- Update the firmware on the selected AN-X
- Patch the firmware on the selected AN-X

In addition, it can be used to:

- clear the AnxInit log
- copy the contents of the log to the clipboard for use by another application. This is often useful for technical support

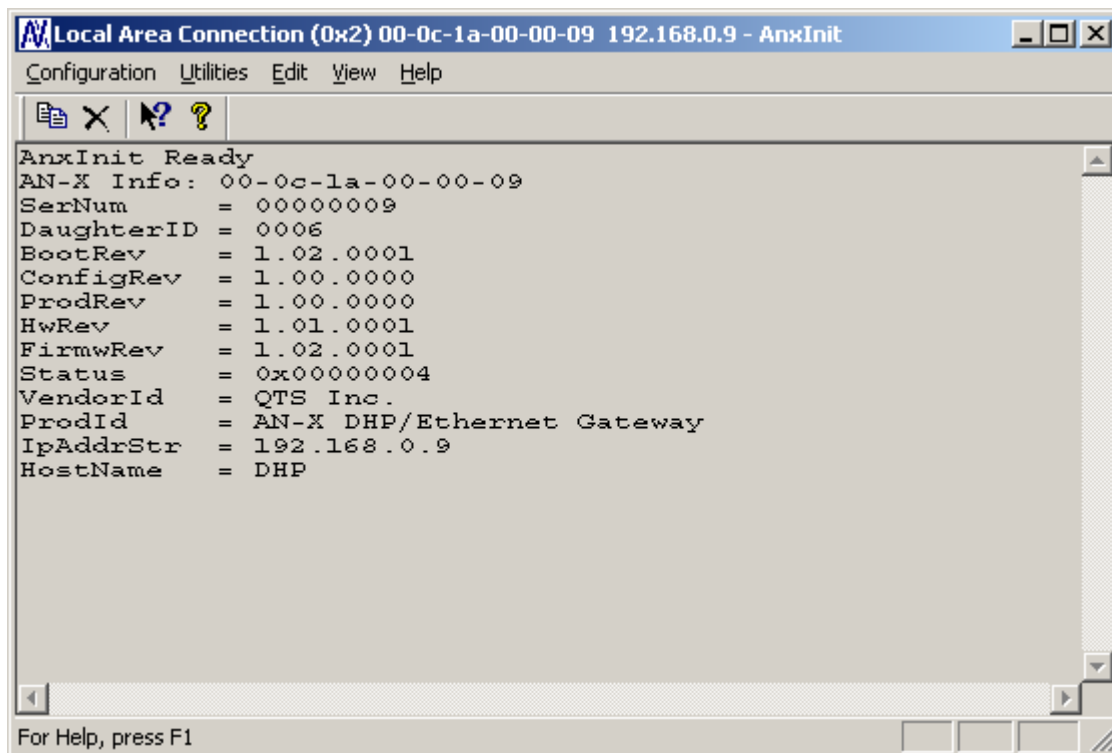
AnxInit Log

AnxInit logs messages in its main window. These messages are often useful for determining the cause of errors or for technical support.

To clear the log, select *Edit/ClearLog*.

To copy the contents of the Log to the Windows clipboard so that they can be pasted into another application, select *Edit/Copy*.





The screenshot shows a window titled "Local Area Connection (0x2) 00-0c-1a-00-00-09 192.168.0.9 - AnxInit". The window contains a list of configuration parameters for the AN-X module. The text is as follows:

```
AnxInit Ready
AN-X Info: 00-0c-1a-00-00-09
SerNum      = 00000009
DaughterID  = 0006
BootRev     = 1.02.0001
ConfigRev   = 1.00.0000
ProdRev     = 1.00.0000
HwRev       = 1.01.0001
FirmwRev    = 1.02.0001
Status      = 0x00000004
VendorId    = QTS Inc.
ProdId      = AN-X DHP/Ethernet Gateway
IpAddrStr   = 192.168.0.9
HostName    = DHP
```

At the bottom of the window, it says "For Help, press F1".

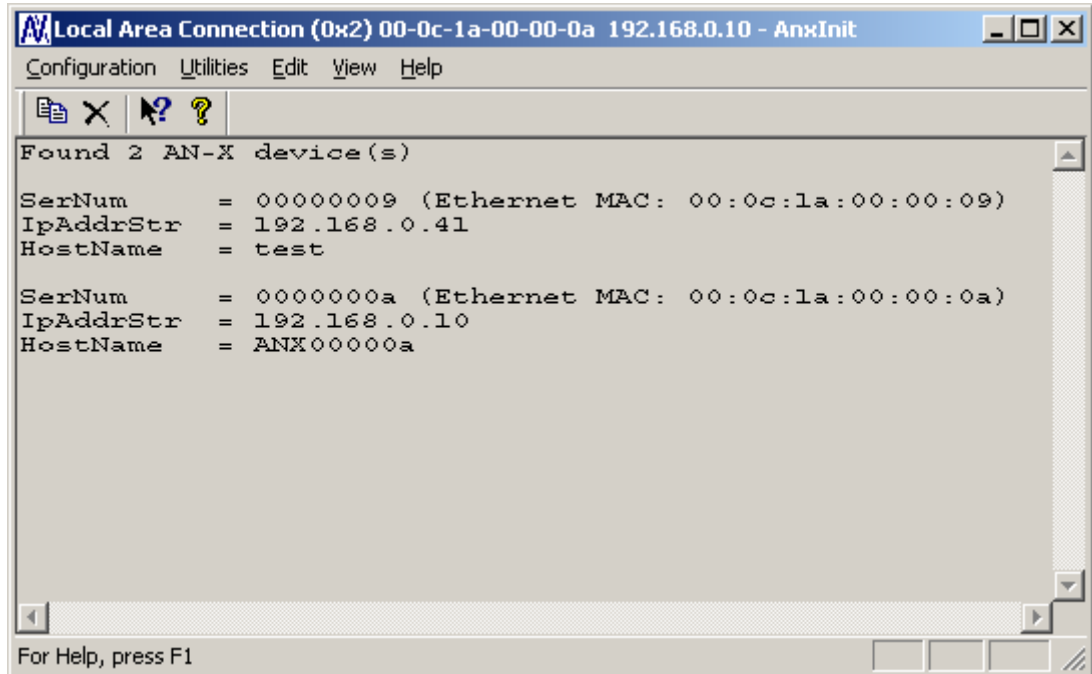
AN-X Log

Locating Available AN-X Modules

To locate all accessible AN-X modules on the Ethernet network, select *Utilities/Locate All AN-X Modules*.

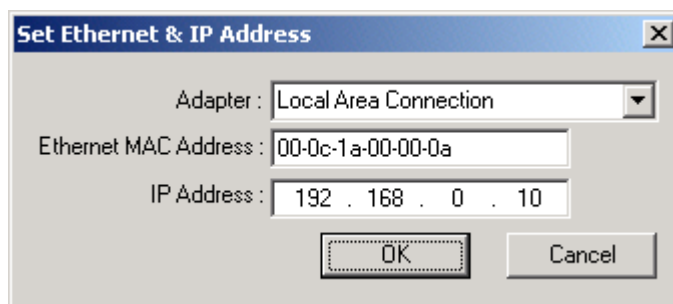
AnxInit displays a list of the AN-X modules it finds, showing their MAC IDs, IP addresses and host names.

This command is useful for determining IP addresses when they have been set by a DHCP server or for confirming that an AN-X is accessible.



Selecting an AN-X

Before you can perform an operation on an AN-X, you must select which AN-X you want the operation performed on. Choose *Utilities/Select An AN-X* to select a specific AN-X.



From the Adapter list, select the network adapter that connects to the Ethernet network that contains the AN-X.

In the *Ethernet MAC Address* field, enter the MAC Address of the AN-X you wish to select. It can be found on the AN-X label or by using the *Locate All AN-X Modules* command. The format is as shown above, six pairs of hexadecimal digits separated by hyphens.

In the *IP Address* field, enter the Ethernet IP address of the AN-X you wish to select. It can be found using the *Locate All AN-X Modules* command. The format is as shown above, four decimal numbers, each in the range 0 to 255.

Both MAC address and IP address must match the settings on the AN-X in order for communication to occur.

Click OK to select the AN-X.

The title bar of AnxInit shows the MAC Address and IP Address of the currently selected AN-X.

Set AN-X IP Configuration

Utilities/AN-X IP Configuration sets the AN-X IP address and hostname.

The AN-X must be on the local Ethernet to set its IP address.

First select the AN-X using the *Utilities/Select An AN-X* command.

Next select *Utilities/AN-X IP Configuration*. The *AN-X TCP/IP Configuration* dialog appears.

AN-X TCP/IP Configuration

Enter the IP configuration you want the previously selected AN-X module to use. You MUST enter a valid Default gateway IP address that is on the same subnet as the AN-X module, but you don't need to have a device at that address.

Host Name : ANX00000e

Obtain an IP address automatically (DHCP)

Use the following Settings:

IP Address : 192 . 168 . 0 . 10

Subnet mask : 255 . 255 . 255 . 0

Default gateway : 192 . 168 . 0 . 1

Finish Cancel

Enter a *Host Name* for the AN-X. AN-X uses the host name to create ControlLogix tags, so give the AN-X a meaningful host name. This name is used internally by AN-X and may be used to identify the AN-X if you have a DNS server on your network. The name can be from 1 to 31 characters long.

To configure the AN-X to obtain its IP address from a DHCP server on the network, select *Obtain an IP address automatically (DHCP)*

To configure the AN-X to use a static IP address, select *Use the following Settings* and enter the following:

- the desired IP address for the AN-X.
- the Subnet mask for the AN-X
- the default gateway for your network.

You must enter a default gateway address that is valid for the subnet, even if there is no device at the gateway address on the network.

Click OK to complete the configuration.

Use the *Utilities/Restart AN-X* to restart the AN-X in production mode.

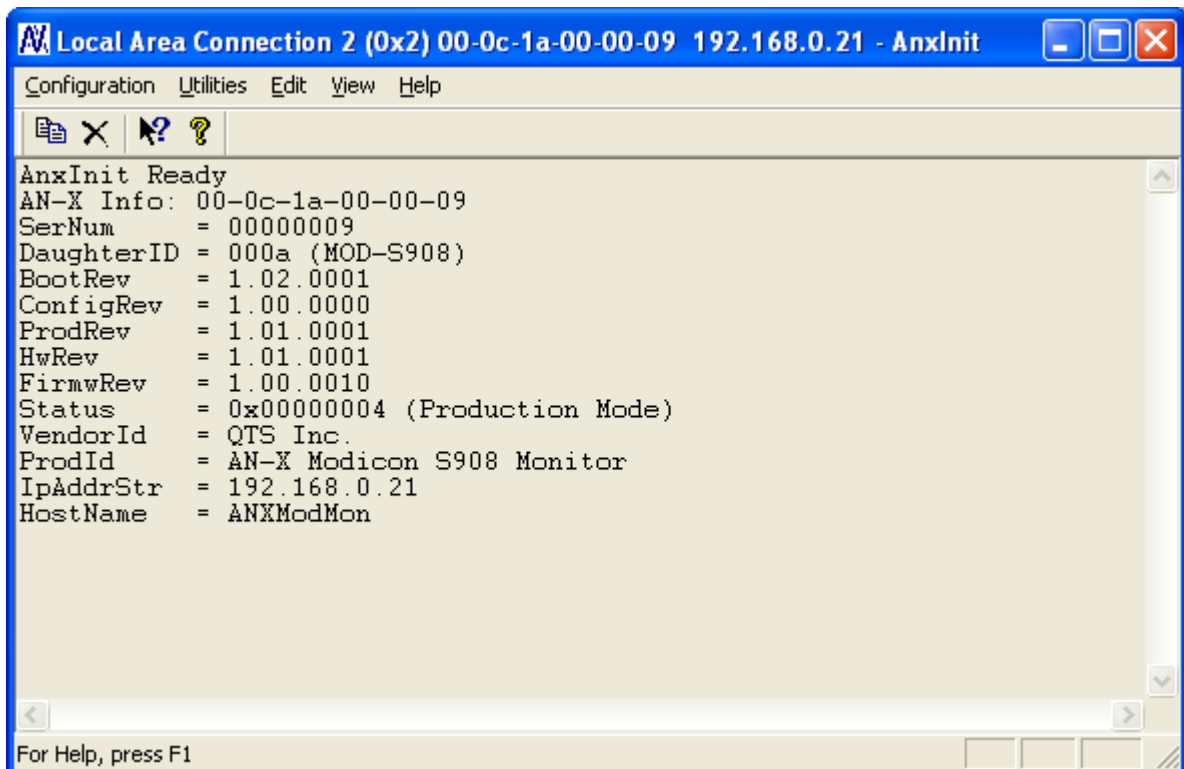
If you Cancel the *Utilities/AN-X IP Configuration* command, AN-X is left running in boot mode. Use the *Utilities/Restart AN-X* command to restart the AN-X.

Restart an AN-X

Use the *Utilities/Restart AN-X* command to restart the currently selected AN-X in production mode.

AN-X Info

The *Utilities/AN-X Info* command provides information about the currently selected AN-X in the log window.



```

AnxInit Ready
AN-X Info: 00-0c-1a-00-00-09
SerNum      = 00000009
DaughterID  = 000a (MOD-S908)
BootRev     = 1.02.0001
ConfigRev   = 1.00.0000
ProdRev     = 1.01.0001
HwRev       = 1.01.0001
FirmwRev    = 1.00.0010
Status      = 0x00000004 (Production Mode)
VendorId    = QTS Inc.
ProdId      = AN-X Modicon S908 Monitor
IpAddrStr   = 192.168.0.21
HostName    = ANXModMon
  
```

For Help, press F1

The information shown:

AN-X Info

Ethernet MAC address



A product of Quest Technical Solutions
 Sold and Supported by
 ProSoft Technology Inc.
www.prosoft-technology.com



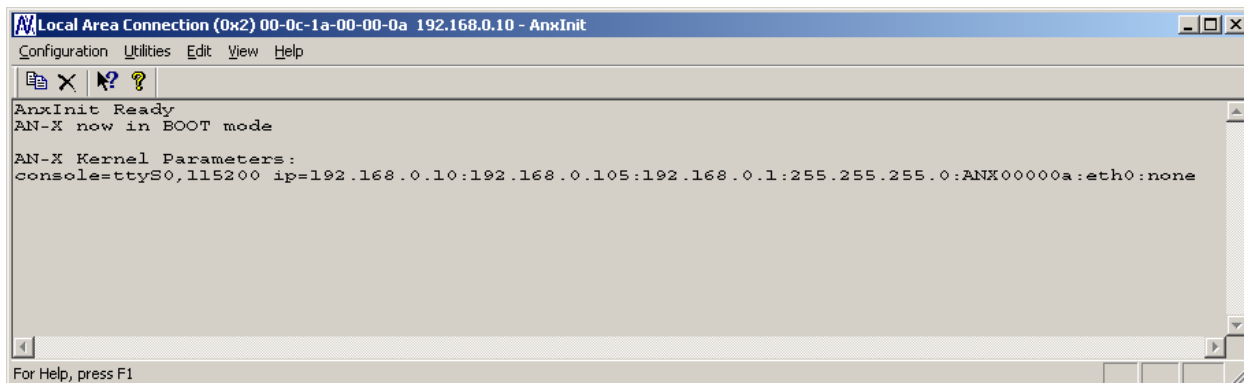
SerNum	Serial number
DaughterID	Daughterboard ID, 10 (0a hex) for AN-X-MOD (Monitor)
BootRev	Boot code version
ConfigRev	Configuration kernel version
ProdRev	Production kernel version
HwRev	Hardware version
FirmwRev	Firmware release version (depends on current operating mode)
Status	see below
VendorId	Vendor ID
ProdId	Product ID
IpAddrStr	AN-X IP address
HostName	AN-X host name

In boot mode, FirmwRev, Vendor ID and Product ID are not valid, and IpAddrStr and HostName are not shown.

Read Kernel Parameters

The *Utilities/Read Kernel Parameters* command displays various communications parameters for the currently selected AN-X

This command resets the AN-X. You will be warned and given the opportunity to cancel the command.



The *Utilities/Read Kernel Parameters* command leaves the AN-X running the boot code. Use the *Utilities/Restart AN-X* command to restart the AN-X in production mode.



Run Config Mode

The *Utilities/Run Config Mode* command is used to restart the currently selected AN-X in configuration mode (normally used internally for updating firmware).

This command is not used in normal operation but may be required for technical support.

The AN-X is in configuration mode when the SYS LED flashes red twice, followed by a pause.

To exit configuration mode, use the *Utilities/Restart AN-X* command to restart AN-X in production mode.

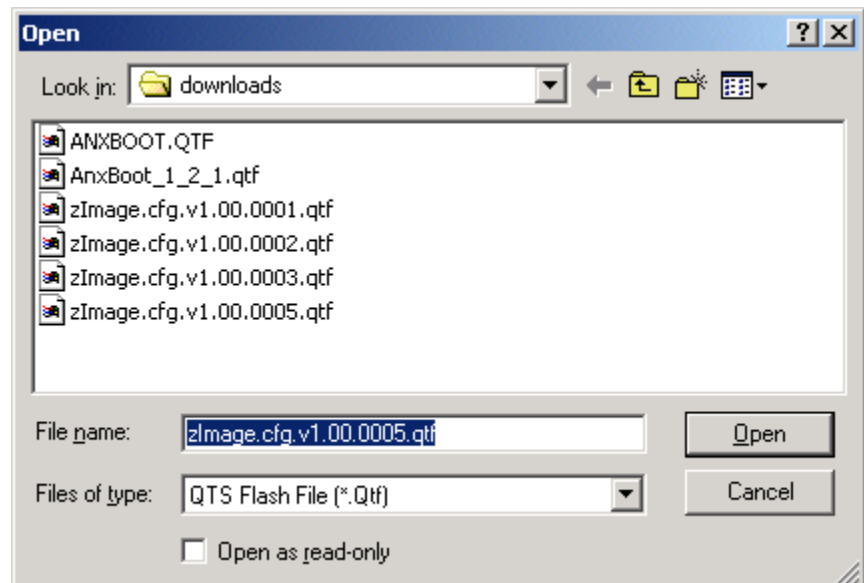
Update AN-X Flash

The *Utilities/Update AN-X Flash* command updates the low-level firmware (configuration and production kernels).

Files have extension qtf.

This command resets the AN-X. You will receive a warning and be given the opportunity to Cancel the command.

If you cancel at the filename dialog, the AN-X has already been reset and is in boot mode. Use the *Utilities/Restart AN-X* command to restart it in production mode.



Update Firmware

There are two ways to update all the firmware in an AN-X module.



1. The *Configuration/Firmware Update* command starts the firmware update wizard, which takes you step by step through the firmware update process.
2. The *Utilities/Update Firmware* command updates all the firmware on an AN-X you have selected using the *Utilities/Select An AN-X* command.

Firmware files have extension *bin*.

Firmware Update Wizard

Select the *Configuration/Firmware Update* command to start the firmware update wizard.

Step 1:

In step 1, you identify the AN-X you are configuring.

Step 1: AN-X Selection

Select this computer's Ethernet adapter that's on the same Ethernet subnet as the AN-X module you want to configure (you may only have one Ethernet adapter in your computer)

Local Area Connection

Enter the Ethernet MAC Address of the AN-X module you want to configure. You can get this from the label on the AN-X module or by selecting Utilities/Locate All AN-X Modules (if the module's current IP address is on the same subnet).

00-0c-1a-00-00-09

Enter the IP address on the local subnet that you intend the AN-X module to use.

192 . 168 . 0 . 9

Next >> Exit

1. Select the Ethernet adapter that's connected to the AN-X. In most cases there will be just one Ethernet adapter in the computer. The AN-X must be on the same subnet as the computer.

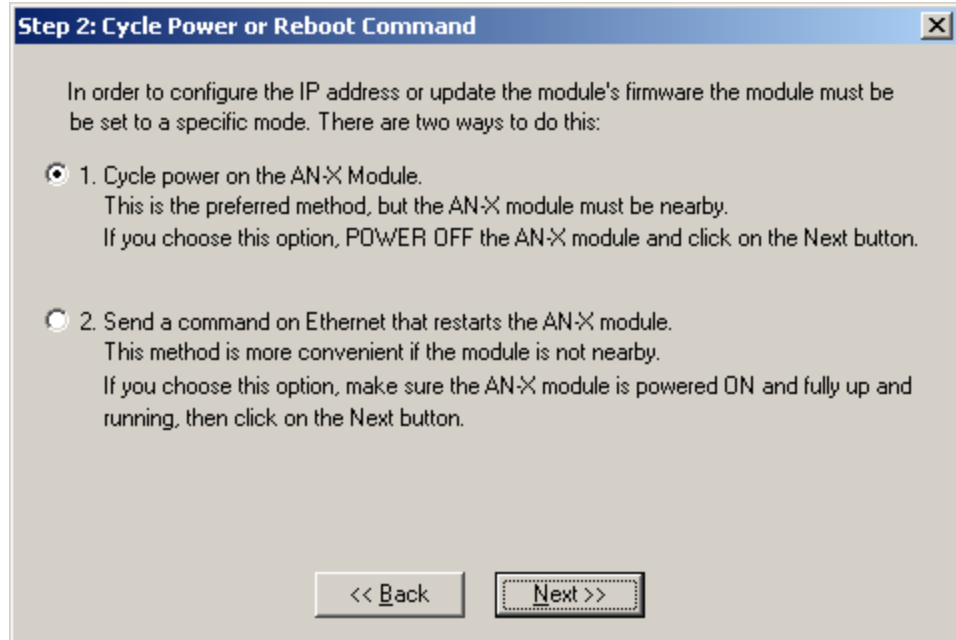
2. Enter the MAC address of the AN-X you are updating. This is printed on the AN-X label. It consists of six pairs of hexadecimal digits, separated by hyphens. In the example above, it's 00-0c-1a-00-00-09.

If the AN-X is already online, you can obtain its MAC address using the *Utilities/Locate All AN-X Modules* command.

3. Enter the IP address of the AN-X you want to update

Step 2

In step 2, you choose a method of restarting AN-X to put it in config mode.

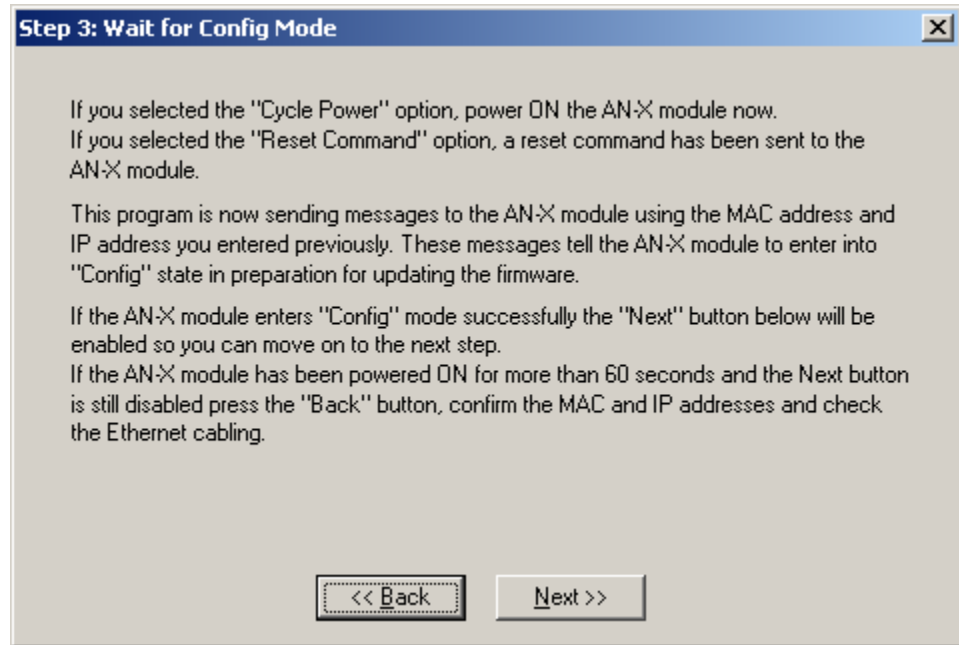


The preferred method is to cycle power on the AN-X. Select the first option on the screen and click the *Next >>* button.

The second method, useful if the AN-X is not easily accessible, is to send it a command over Ethernet. The AN-X must be powered on and completely running for this method to work. For example, if this is the first time you are configuring a new AN-X, allow sufficient time for it to acquire an IP address from a DHCP server or to time out and use its default IP address (about 3 minutes). Select the second option on the screen and click the *Next >>* button.

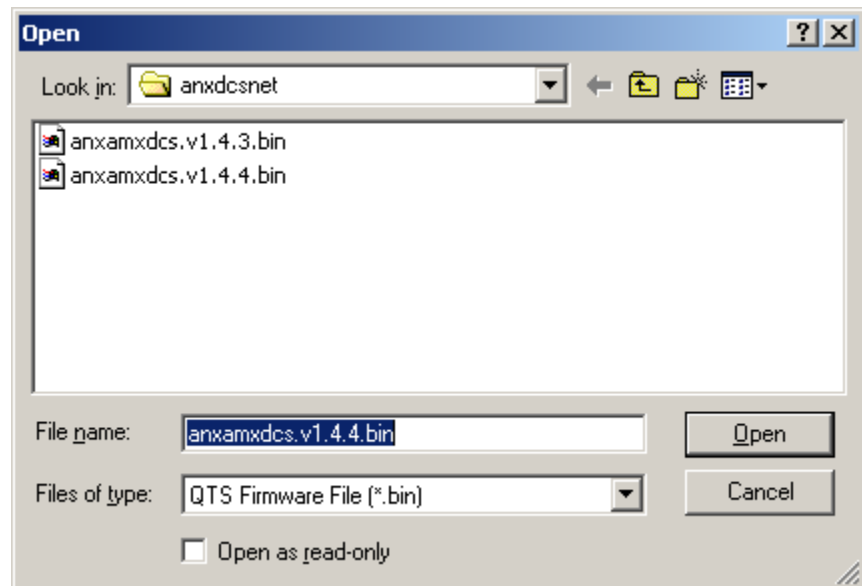
Step 3:

Wait for AN-X to enter config mode. While AnxInit is waiting, the *Next>>* button is disabled. When AN-X is in boot mode, the *Next>>* button is enabled.



If the AN-X does not enter config mode within about 60 seconds, return to the previous screens and check the entries.

Click the *Next>>* button, and select the firmware file you want to download and click *Open*.



AnxInit transfers the firmware file and restarts the AN-X.

After you run update the firmware, you must reconfigure the AN-X.

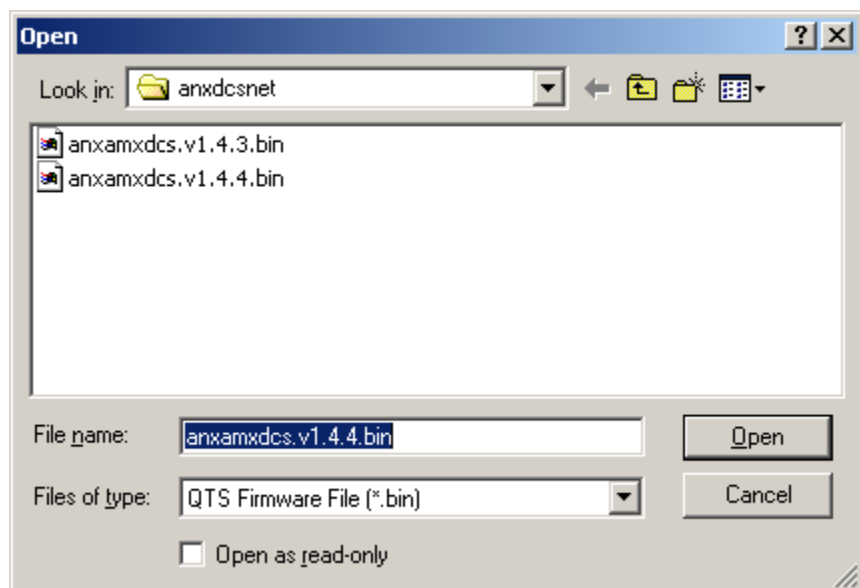
Update Firmware Command

The *Utilities/Update Firmware* command updates all the firmware on an AN-X you have previously selected using the *Utilities/Select An AN-X* command.

This command resets the AN-X. You will receive a warning and be given the opportunity to Cancel the command.

If you cancel at the filename dialog, the AN-X has already been reset and is in configuration mode. Use the *Utilities/Restart AN-X* command to restart it in production mode.

Click the *Next>>* button, and select the firmware file you want to download and click *Open*.



AnxInit transfers the firmware file and restarts the AN-X.

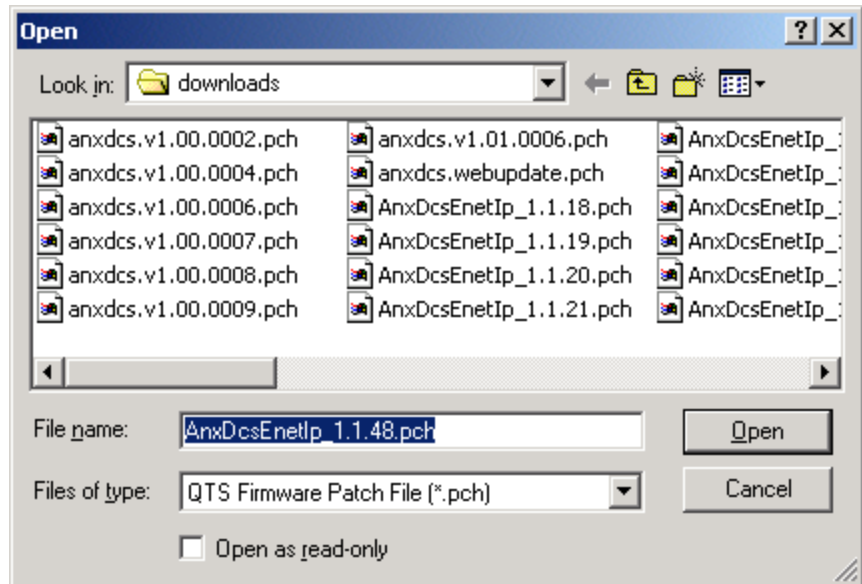
After you run update the firmware, you must reconfigure the AN-X.

Patch Firmware

The *Utilities/Patch Firmware* command applies small patches to the firmware running on the AN-X.

These patch files have extension *pch*.





This command resets the AN-X. You will receive a warning and be given the opportunity to Cancel the command.

You do not have to reconfigure the AN-X after applying a patch. All configuration information will be left intact.

When the patch has been applied, AnxInit restarts the AN-X in production mode.

If you cancel at the filename dialog, the AN-X has already been reset and is in configuration mode. Use the *Utilities/Restart AN-X* command to restart it in production mode.

Using the Web Interface

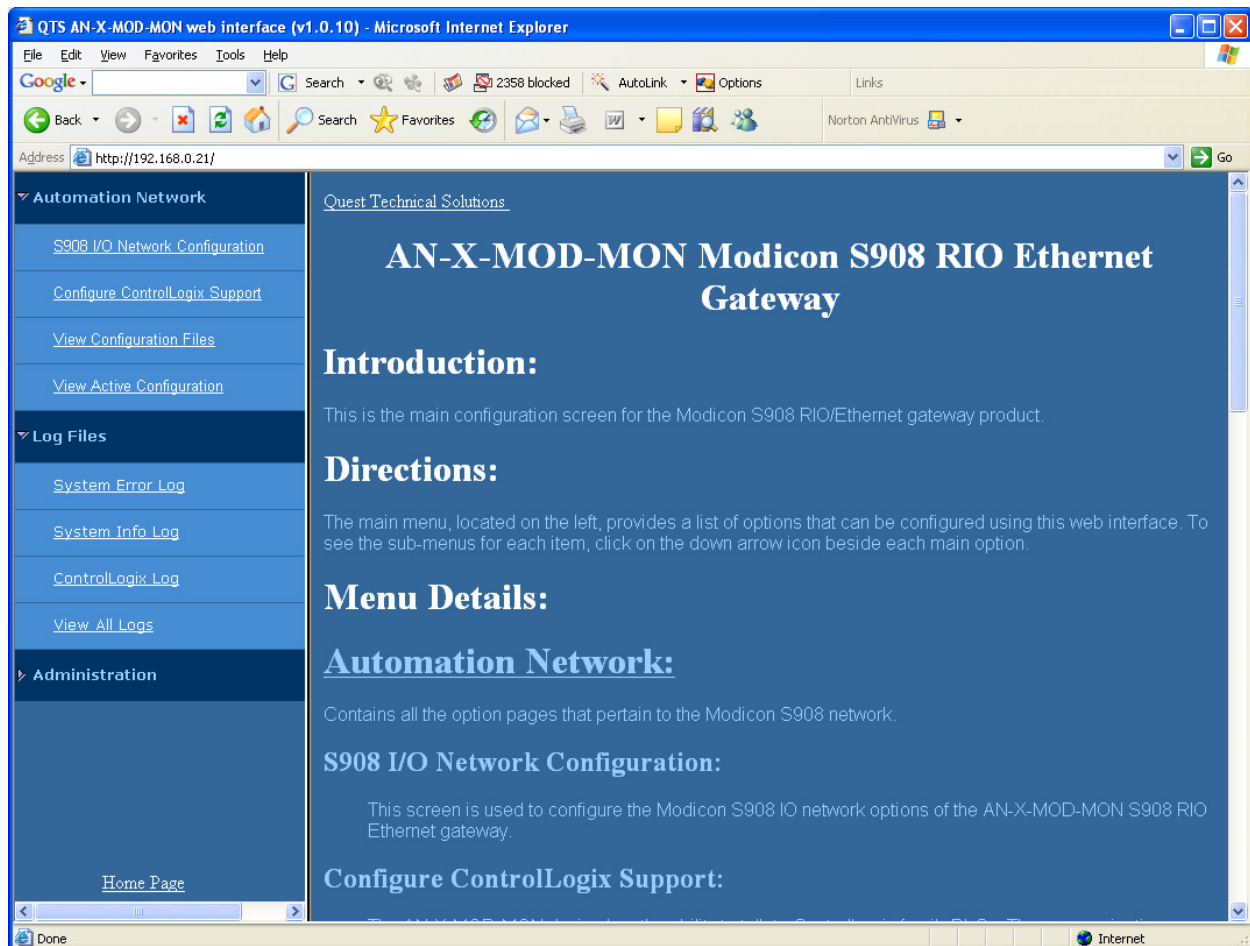
The AN-X module contains a webserver capable of communicating with standard web browsers such as Internet Explorer.

Use the web interface to:

- set the S908 remote I/O network configuration
- set the ControlLogix scheduled data configuration
- view the current configuration
- view AN-X logs
- archive the AN-X configuration files

To use the web interface, you need to know the IP address of the AN-X. Use the *Utilities/Locate All AN-X Modules* command in AnxInit to find all AN-X modules on the Ethernet network.

To access the web interface, start your web browser and type the AN-X IP address where you normally enter web addresses in the browser.

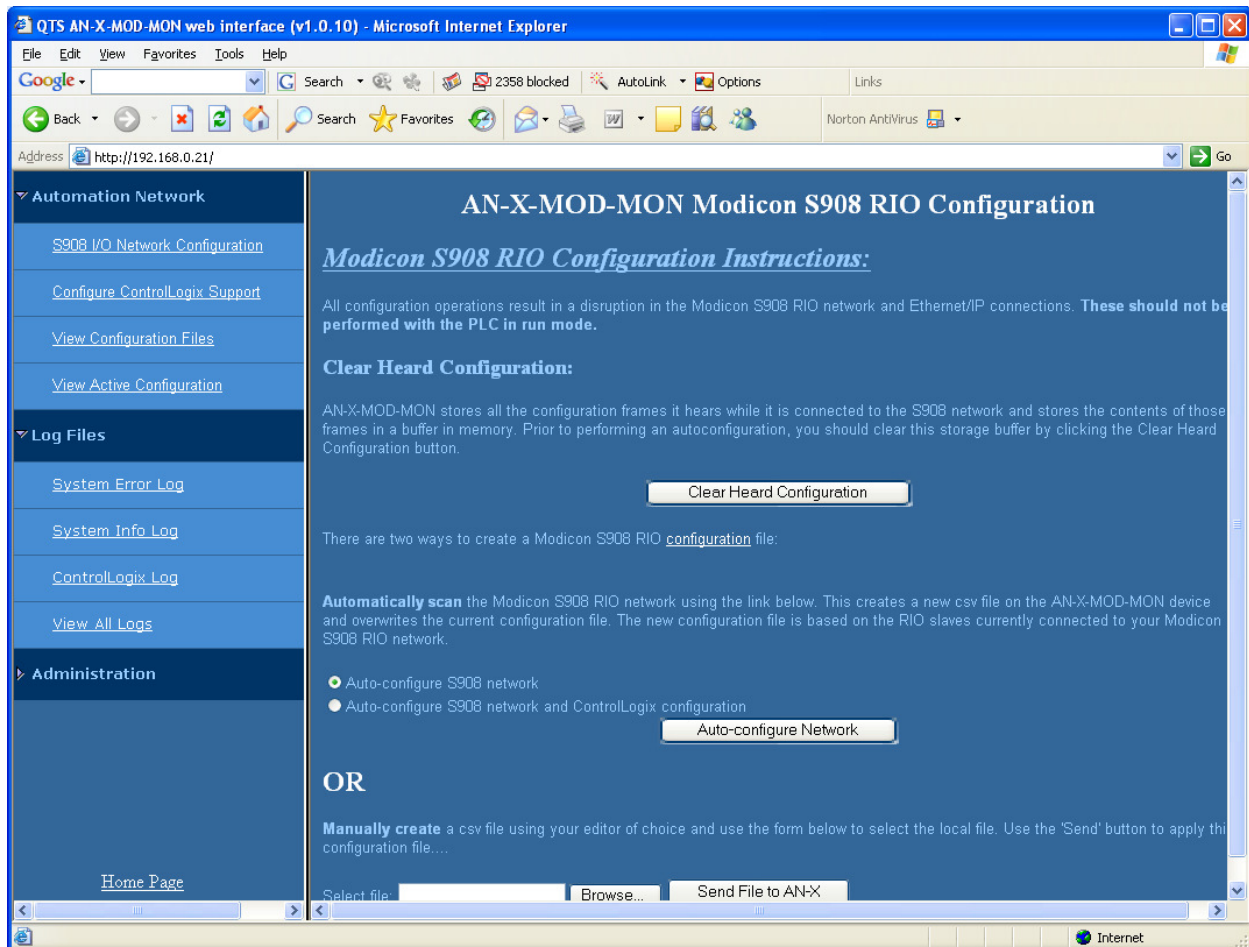


The left pane contains commands. Click on the arrows at the left of the main headings to expand or contract the sections.

The contents of the right pane depend on the current command being executed.

S908 I/O Network

Select *Automation Network/S908 I/O Network Configuration* to configure the I/O the AN-X-MOD (Monitor) is to monitor.



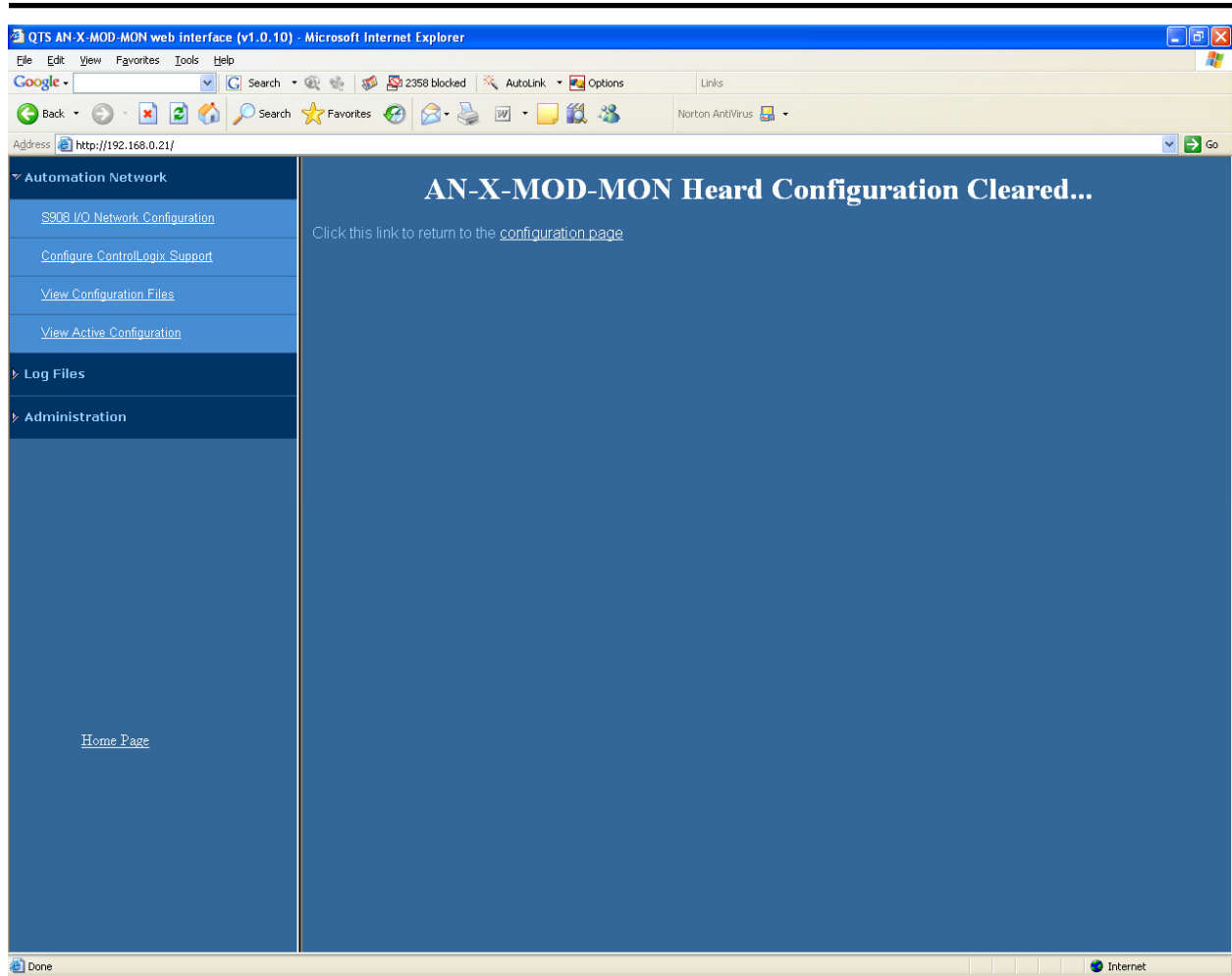
Autoconfiguration

If you are autoconfiguring the S908 remote I/O network, make sure the network is connected to the AN-X-MOD (Monitor).

Before you autoconfigure the AN-X, clear the previously captured configuration frames by clicking *Clear Heard Configuration*.

When AN-X has cleared the buffer, it displays this page.





Click the *configuration page* link to return to the main RIO Configuration page.

AN-X can generate a default ControlLogix data mapping configuration (see page 26). If you want AN-X to generate the ControlLogix configuration, check *Auto-configure S908 network and ControlLogix configuration*. Otherwise, check *Auto-configure S908 network* (the default).

Stop and start the Modicon controller to force it to send out configuration frames on the S908 network.

Click the *Auto-configure Network* button.

AN-X then uses the configuration frames it captured to build a configuration file and displays the configuration it generated.

Manual Configuration

Manual configuration does not require that the network be attached.

Create a configuration file. Refer to page 26 for details on the file format.



A product of Quest Technical Solutions
Sold and Supported by
ProSoft Technology Inc.
www.prosoft-technology.com



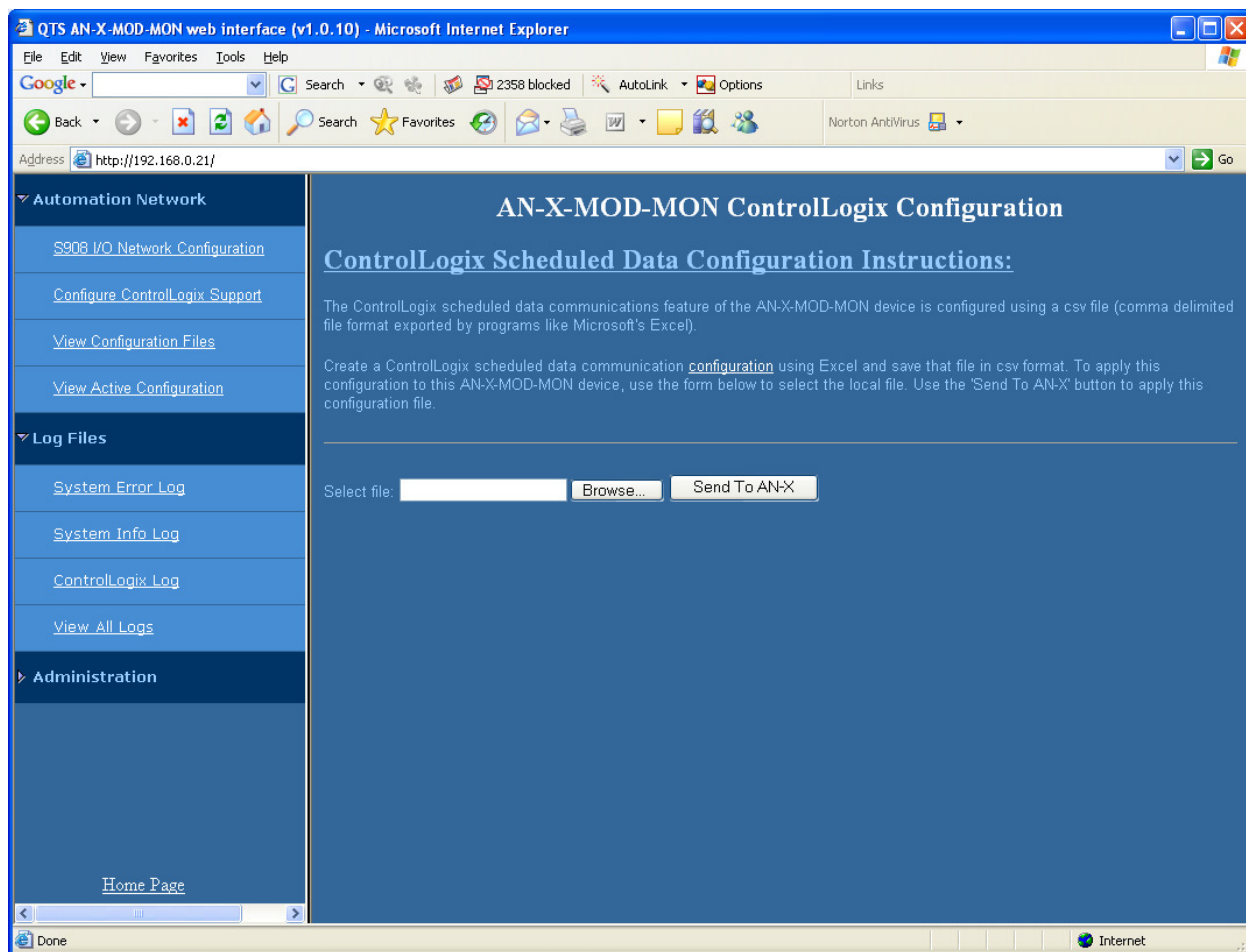
Browse or type the file name.

Click the *Send File to AN-X* button to send the values to AN-X.

Configure ControlLogix Support

AN-X exchanges scheduled data with a ControlLogix processor over Ethernet. Refer to section Exchanging Scheduled Data with a ControlLogix on page 26 for information on configuring scheduled data exchange.

Select *Automation Network/Configure ControlLogix Support* in the web interface to upload the configuration.



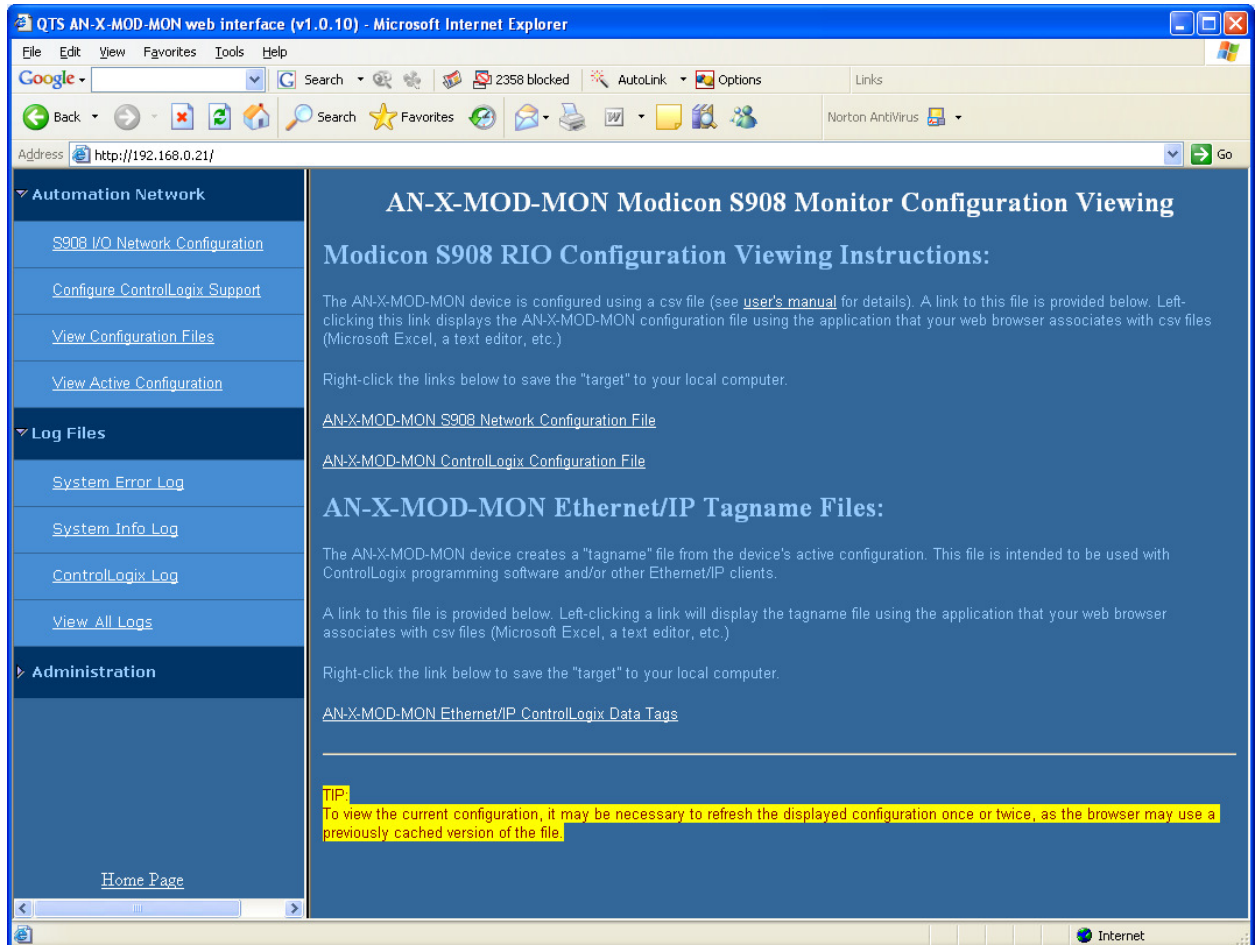
Type or browse the configuration file name into the *Select file:* area. Then click the *Send To AN-X* button to send the file to AN-X.

Check the ControlLogix Log to determine if there have been any errors with the upload.



View Configuration Files

Select *View Configuration Files* to view the S908 and ControlLogix configuration files.



Click on the links to view the files using the application that is associated with CSV files.

Right click on the links to retrieve the files from AN-X and store them on your computer.

View Active Configuration

Select *View Active Configuration* to view the S908 remote I/O or ControlLogix configuration file in the web browser.



AN-X-MOD-MON Active Configuration Log

This page displays the active configuration for the [Modicon S908 network](#) and the [Ethernet/IP \(ControlLogix\) server](#)

```

AN-X-MOD-MON Network AutoConfig
.....Scan Successful
AN-X-MOD-MON I/O Network Config File /home/axctrl/ModRioCfg.csv
6: d04s1 CPS_114_xx
7: d04s2 CRA_93x_00
8: d04s3 DDI_353_00
9: d04s4 DDO_353_00
11: d04s5 ACI_030_00
13: d04s6 ACO_020_00
15: Drop 4 [O: 12] [I: 22] [MS: 6]
18: d05s2 B810
20: d05s3 B804
21: d05s4 B863
22: Drop 5 [O: 4] [I: 8] [MS: 0]
.....Parse Successful

```

The left sidebar contains navigation links under 'Automation Network', 'Log Files', and 'Administration'. The 'Automation Network' section includes links for S908 I/O Network Configuration, Configure ControlLogix Support, View Configuration Files, and View Active Configuration. The 'Log Files' section includes System Error Log, System Info Log, ControlLogix Log, and View All Logs. The 'Administration' section is currently empty.

Click the *Modicon S908 network* link to view the current I/O network configuration.

Click the *Ethernet/IP* link to view the current ControlLogix scheduled data configuration.



A product of Quest Technical Solutions
 Sold and Supported by
 ProSoft Technology Inc.
www.prosoft-technology.com



Log Files

AN-X maintains various logs to record diagnostic and error messages. Use the Log Files menu in the web interface to view these logs.

System Error Log

The System Error log records errors that occur during AN-X operation. This log is normally empty.

System Info Log

The System Info Log records informational messages during startup and normal operation.

ControlLogix Log

The Ethernet/IP log shows messages and errors associated with the ControlLogix scheduled data operation.

View All Logs

Use *View All Logs* to list and view all the AN-X logs. To view a log file, double click on the file name.

Administration Menu

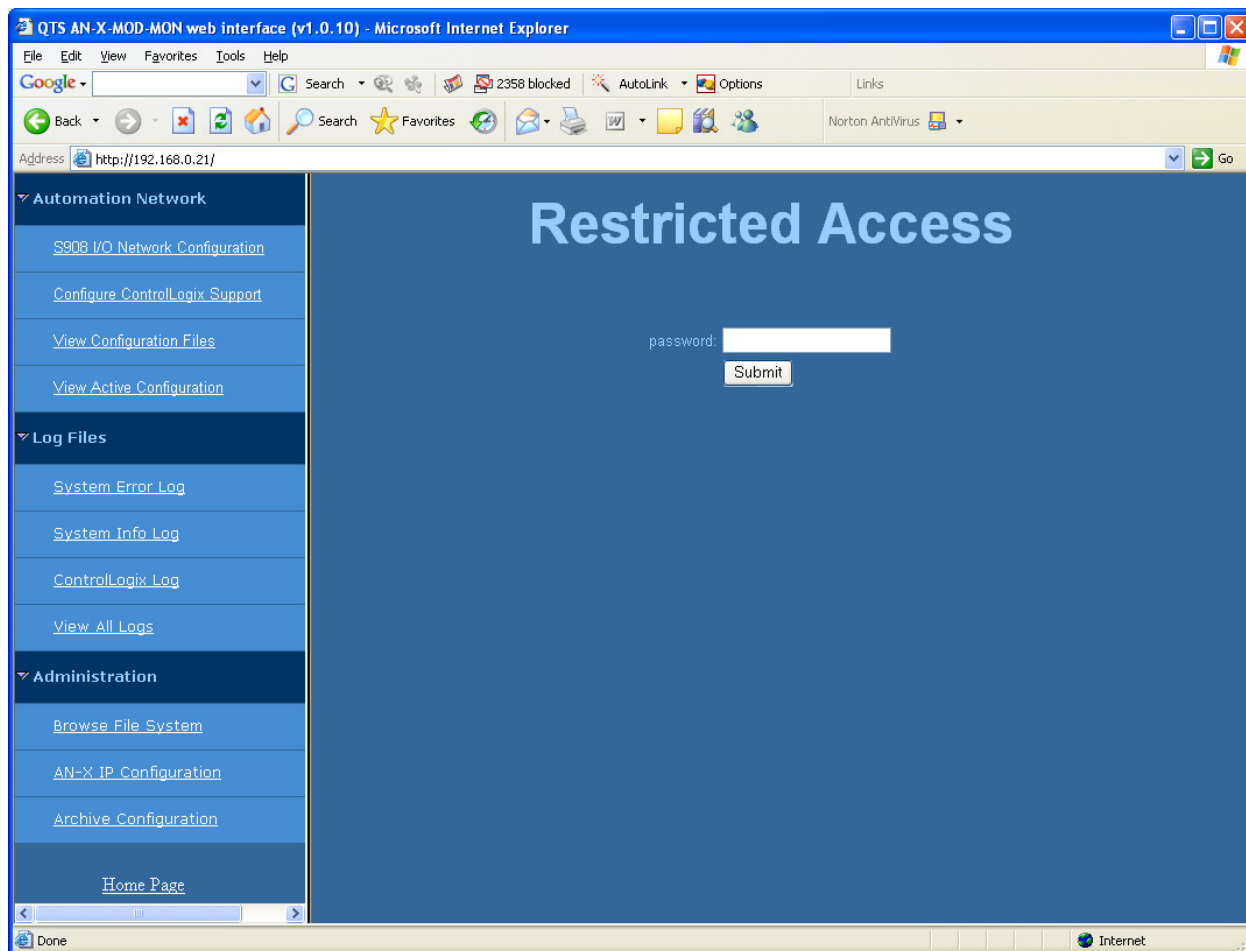
The Administration Menu is used to set the AN-X IP address, to view and edit files on AN-X, and to archive AN-X configuration files.

The file edit function is password protected and is used only for AN-X technical support.

Browse File System

If you are required by technical support to examine files on the AN-X, select Administration/Browse File System.





Technical support will provide the password and supply detailed information on any further steps.

AN-X IP Configuration

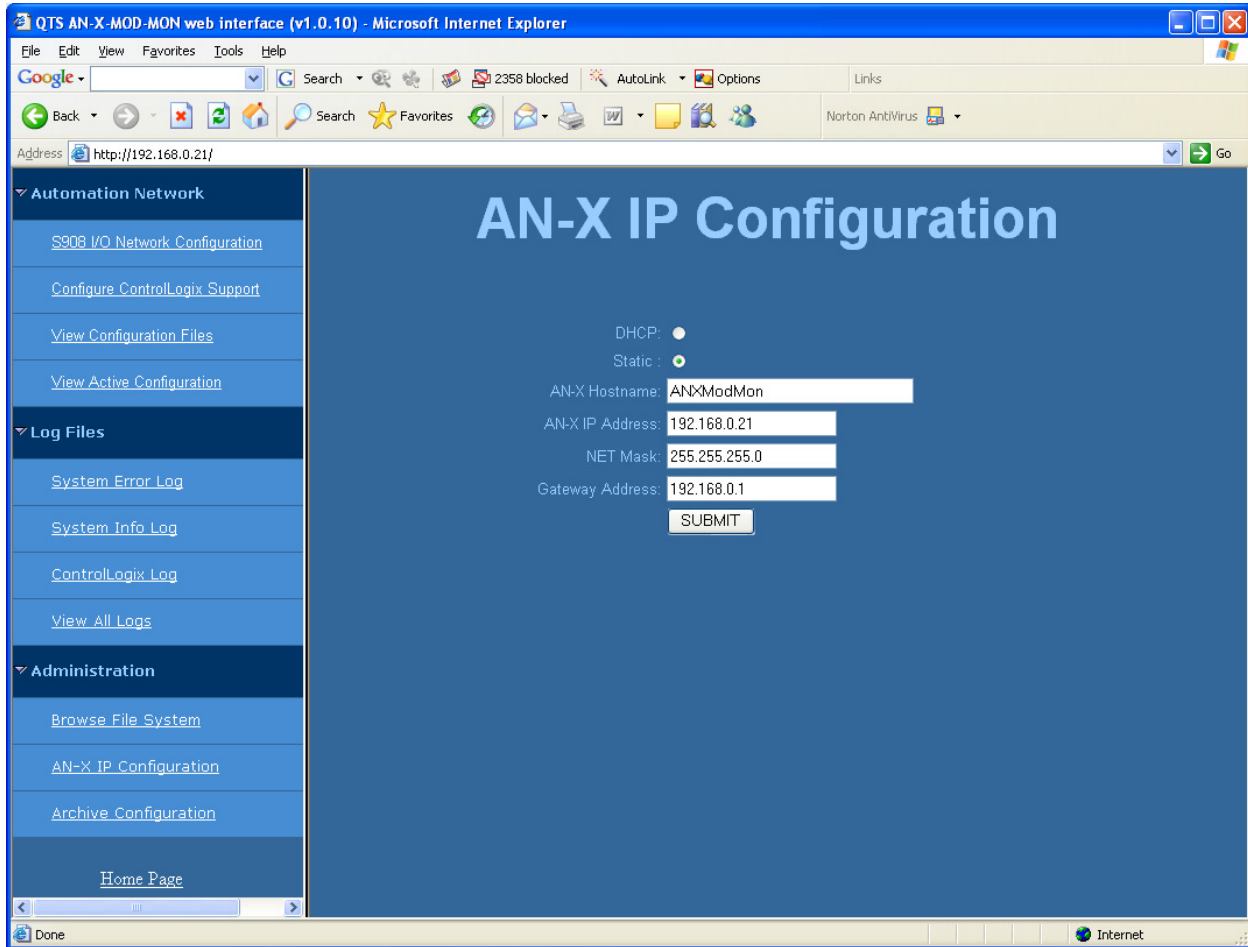
You can change the AN-X IP configuration from the web interface. This requires that you know the correct IP address and can use it to access the web interface.

Select *Administration/AN-X IP Configuration*.



A product of Quest Technical Solutions
Sold and Supported by
ProSoft Technology Inc.
www.prosoft-technology.com





You can configure the AN-X to use DHCP or to use a static IP address.

Click SUBMIT to set the parameters.

When prompted, click CONTINUE to reboot the AN-X with the new parameters.

Archive Configuration

You can archive all the current AN-X configuration files and log files from the web interface. The archive file is a standard gzip compressed tar archive.

Select *Administration/Archive configuration*.

Click on the Archive File link and save the file. Select the destination where the file will be stored.



Troubleshooting

LEDs

The AN-X-MOD (Monitor) has LEDs that indicate the state of the Ethernet connection, the overall module state and the connection to S908 remote I/O network.

Ethernet LEDs

There are two LEDs that indicate the state of the Ethernet connection.

The orange LED, labelled 100, is on if the link is running at 100 Mbits/second and is off otherwise.

The green Link/Act LED is off if the link is inactive and is on if the link is active. If activity is detected, the link blinks at 30 ms intervals and continues blinking as long as activity is present.

SYS LED

The SYS LED is used by the AN-X operating system and software to indicate the state of operations and errors. Errors or status indication in boot mode cause the LED to flash yellow. Otherwise, the LED flashes red.

The SYS LED should be used in conjunction with the logs to locate the cause of problems.

In the following, red 3 means three red flashes followed by a pause, and so on.

SYS LED State	Possible cause
Red 2	AN-X is in config mode
Red 3	DHCP configuration failed
Red 4	Fatal application error, check logs for cause
Red 5	Application memory access violation, check logs
Red 6	Application failed, illegal instruction, check logs
Red 7	Application crashed, unknown cause, check logs
Fast red flash	Reconfiguration (set station number and baud rate) failed
Single red flash	Unscheduled messaging, addressing or connection problem
Slow red flash	Script or application problem during startup

At startup, the SYS LED sequence is:

- boot code starts – fast flashing red
- boot code loads a kernel – solid red
- if the configuration kernel is loaded, 2 red flashes followed by a pause
- if the production kernel loads with no errors, solid green

NET LED – Network Status

The NET LED indicates the status of the S908 remote I/O network connection.

Off	Inactive
Solid green	good frames being received
Flashing or solid red	bad frame or no frame received within the last second

Logs

The AN-X-MOD (Monitor) maintains various logs that indicate causes of errors, steps in normal operation, and so on. The logs are accessible from the web interface.

Diagnostic Counters

The diagnostic counters indicate the quality of the S908 network communication. They can be mapped into the ControlLogix data.

Refer to page 29 for details.



Updating the Firmware

The AN-X operating software consists of several parts:

- boot code, runs at startup
- configuration kernel, runs when you update firmware
- production kernel, runs in normal operation
- application software, for network communication and scheduled messaging

The kernels are supplied in file with extension *qtf* and are updated using the AnxInit utility. Run the command *Utilities/Update AN-X Flash* and select the file you wish to download. Refer to page 47 for details.

Firmware files contain the application programs for AN-X and have extension *bin*. They are downloaded using the command *Configuration/Firmware Update* or *Utilities/Update Firmware* in AnxInit. Refer to page 47 for details.

Occasionally individual patch files are released. They have extension *pch* and are downloaded using the *Utilities/Patch Firmware* command in AnxInit. Refer to page 51 for details.

Reading Version Numbers

To read the version numbers of the various software components:

Boot code	AnxInit – AN-X Info
Configuration kernel	AnxInit – AN-X Info
Production kernel	AnxInit – AN-X Info
Firmware	AnxInit – AN-X Info (version depends on current mode, boot, configuration or production)
Individual applications	
	Web interface, System Info Log



Specifications

Parameter	Specification
Function	Bridge between Ethernet and Modicon S908 remote I/O network
Typical Power Consumption	200 mA @ 12 VDC or 100 mA @ 24 VDC
Maximum Power dissipation	2.4W
Environmental Conditions:	
Operational Temperature	0-50 °C (32-122 °F)
Storage Temperature	-40 to 85 °C (-40 to 185 °F)
Relative Humidity	5-95% without condensation



Support

How to Contact Us: Sales and Support

Sales and Technical Support for this product are provided by ProSoft Technology. Contact our worldwide Sales or Technical Support teams directly by phone or email:

Asia Pacific

+603.7724.2080, asiapc@prosoft-technology.com

Europe – Middle East – Africa

+33 (0) 5.34.36.87.20, Europe@prosoft-technology.com

North America

+1.661.716.5100, support@prosoft-technology.com

Latin America (Sales only)

+1.281.298.9109, latinam@prosoft-technology.com



A product of Quest Technical Solutions
Sold and Supported by
ProSoft Technology Inc.
www.prosoft-technology.com



Warranty

Quest Technical Solutions warrants its products to be free from defects in workmanship or material under normal use and service for three years after date of shipment. Quest Technical Solutions will repair or replace without charge any equipment found to be defective during the warranty period. Final determination of the nature and responsibility for defective or damaged equipment will be made by Quest Technical Solutions personnel.

All warranties hereunder are contingent upon proper use in the application for which the product was intended and do not cover products which have been modified or repaired without Quest Technical Solutions approval or which have been subjected to accident, improper maintenance, installation or application, or on which original identification marks have been removed or altered. This Limited Warranty also will not apply to interconnecting cables or wires, consumables nor to any damage resulting from battery leakage.

In all cases Quest Technical Solutions' responsibility and liability under this warranty shall be limited to the cost of the equipment. The purchaser must obtain shipping instructions for the prepaid return of any item under this Warranty provision and compliance with such instruction shall be a condition of this warranty.

Except for the express warranty stated above Quest Technical Solutions disclaims all warranties with regard to the products sold hereunder including all implied warranties of merchantability and fitness and the express warranties stated herein are in lieu of all obligations or liabilities on the part of Quest Technical Solutions for damages including, but not limited to, consequential damages arising out of/or in connection with the use or performance of the Product



A product of Quest Technical Solutions
Sold and Supported by
ProSoft Technology Inc.
www.prosoft-technology.com

