

## EAFC Export Utility



February 15, 2022

## Your Feedback Please

We always want you to feel that you made the right decision to use our products. If you have suggestions, comments, compliments or complaints about our products, documentation, or support, please write or call us.

### **ProSoft Technology, Inc.**

+1 (661) 716-5100

+1 (661) 716-5101 (Fax)

[www.prosoft-technology.com](http://www.prosoft-technology.com)

[support@prosoft-technology.com](mailto:support@prosoft-technology.com)

EAFC Export Utility User Manual

For public use.

February 15, 2022

ProSoft Technology®, is a registered copyright of ProSoft Technology, Inc. All other brand or product names are or may be trademarks of, and are used to identify products and services of, their respective owners.

## Content Disclaimer

This documentation is not intended as a substitute for and is not to be used for determining suitability or reliability of these products for specific user applications. It is the duty of any such user or integrator to perform the appropriate and complete risk analysis, evaluation and testing of the products with respect to the relevant specific application or use thereof. Neither ProSoft Technology nor any of its affiliates or subsidiaries shall be responsible or liable for misuse of the information contained herein. Information in this document including illustrations, specifications and dimensions may contain technical inaccuracies or typographical errors. ProSoft Technology makes no warranty or representation as to its accuracy and assumes no liability for and reserves the right to correct such inaccuracies or errors at any time without notice. If you have any suggestions for improvements or amendments or have found errors in this publication, please notify us.

No part of this document may be reproduced in any form or by any means, electronic or mechanical, including photocopying, without express written permission of ProSoft Technology. All pertinent state, regional, and local safety regulations must be observed when installing and using this product. For reasons of safety and to help ensure compliance with documented system data, only the manufacturer should perform repairs to components. When devices are used for applications with technical safety requirements, the relevant instructions must be followed. Failure to use ProSoft Technology software or approved software with our hardware products may result in injury, harm, or improper operating results. Failure to observe this information can result in injury or equipment damage.

© 2022 ProSoft Technology. All Rights Reserved.

## Open Source Information

### Open Source Software used in the product

The product contains, among other things, Open Source Software files, as defined below, developed by third parties and licensed under an Open Source Software license. These Open Source Software files are protected by copyright. Your right to use the Open Source Software is governed by the relevant applicable Open Source Software license conditions. Your compliance with those license conditions will entitle you to use the Open Source Software as foreseen in the relevant license. In the event of conflicts between other ProSoft Technology, Inc. license conditions applicable to the product and the Open Source Software license conditions, the Open Source Software conditions shall prevail. The Open Source Software is provided royalty-free (i.e. no fees are charged for exercising the licensed rights). Open Source Software contained in this product and the respective Open Source Software licenses are stated in the module webpage, in the link Open Source.

If Open Source Software contained in this product is licensed under GNU General Public License (GPL), GNU Lesser General Public License (LGPL), Mozilla Public License (MPL) or any other Open Source Software license, which requires that source code is to be made available and such source code is not already delivered together with the product, you can order the corresponding source code of the Open Source Software from ProSoft Technology, Inc. - against payment of the shipping and handling charges - for a period of at least 3 years since purchase of the product. Please send your specific request, within 3 years of the purchase date of this product, together with the name and serial number of the product found on the product label to:

ProSoft Technology, Inc.  
Director of Engineering  
9201 Camino Media, Suite 200  
Bakersfield, CA 93311  
USA

### **Warranty regarding further use of the Open Source Software**

ProSoft Technology, Inc. provides no warranty for the Open Source Software contained in this product, if such Open Source Software is used in any manner other than intended by ProSoft Technology, Inc. The licenses listed below define the warranty, if any, from the authors or licensors of the Open Source Software. ProSoft Technology, Inc. specifically disclaims any warranty for defects caused by altering any Open Source Software or the product's configuration. Any warranty claims against ProSoft Technology, Inc. in the event that the Open Source Software contained in this product infringes the intellectual property rights of a third party are excluded. The following disclaimer applies to the GPL and LGPL components in relation to the rights holders:

"This program is distributed in the hope that it will be useful, but WITHOUT ANY WARRANTY; without even the implied warranty of MERCHANTABILITY or FITNESS FOR A PARTICULAR PURPOSE. See the GNU General Public License and the GNU Lesser General Public License for more details."

For the remaining open source components, the liability exclusions of the rights holders in the respective license texts apply. Technical support, if any, will only be provided for unmodified software.

### **Agency Approvals and Certifications**

Please visit our website: [www.prosoft-technology.com](http://www.prosoft-technology.com)

### **Limitation of Liability**

The information in this manual is subject to change without notice, and does not represent a commitment on the part of ProSoft Technology.

PROSOFT TECHNOLOGY, INC AND ITS AFFILIATES SPECIFICALLY DISCLAIM LIABILITY FOR ANY AND ALL DIRECT, INDIRECT, SPECIAL, GENERAL, INCIDENTAL, CONSEQUENTIAL, PUNITIVE OR EXEMPLARY DAMAGES INCLUDING, BUT NOT LIMITED TO, LOSS OF PROFITS OR REVENUE OR ANTICIPATED PROFITS OR REVENUE ARISING OUT OF THE USE OR INABILITY TO USE ANY PROSOFT TECHNOLOGY PRODUCT, EVEN IF PROSOFT TECHNOLOGY AND/OR ITS AFFILIATES HAS BEEN ADVISED OF THE POSSIBILITY OF SUCH DAMAGES OR THEY ARE FORESEEABLE OR FOR CLAIMS BY ANY THIRD PARTY.

Notwithstanding the foregoing, in no event shall ProSoft Technology and/or its affiliates aggregate liability arising under or in connection with the ProSoft Technology product, regardless of the number of events, occurrences, or claims giving rise to liability, be in excess of the price paid by the purchaser for the ProSoft Technology product.

---

# Contents

|   |           |
|---|-----------|
| Your Feedback Please .....                                    | 2         |
| Content Disclaimer .....                                      | 2         |
| Open Source Information .....                                 | 2         |
| Agency Approvals and Certifications.....                      | 3         |
| Limitation of Liability .....                                 | 3         |
| <br>  |           |
| <b>1 About the EAFC Export Utility</b> .....                  | <b>5</b>  |
| <hr/>   |           |
| <b>2 Menu Functions</b> .....                                 | <b>6</b>  |
| 2.1 Site Configuration (Settings).....                        | 7         |
| 2.2 Site Configuration (Options) .....                        | 10        |
| 2.3 Meter Configuration (Settings).....                       | 11        |
| 2.4 Export Configuration (Settings).....                      | 13        |
| 2.5 Run .....   | 21        |
| <br>  |           |
| <b>3 Export Configuration (Advanced Tab)</b> .....            | <b>22</b> |
| 3.1 Column Mapping Interface.....                             | 23        |
| 3.2 Adding and Editing Column Mapping by Section .....        | 27        |
| <br>  |           |
| <b>4 Export Configuration (User Defined Fields Tab)</b> ..... | <b>31</b> |
| 4.1 User Defined Field Mapping Interface .....                | 32        |
| 4.2 Editing a User Defined Field Column .....                 | 36        |
| <br>  |           |
| <b>5 Running a Scan</b> .....                                 | <b>38</b> |
| <hr/>   |           |
| <b>6 Optional Command Line Arguments</b> .....                | <b>39</b> |
| <hr/>   |           |
| <b>7 Support, Service &amp; Warranty</b> .....                | <b>41</b> |
| 7.1 Contacting Technical Support.....                         | 41        |
| 7.2 Warranty Information .....                                | 41        |

# 1 About the E AFC Export Utility

The E AFC Export Utility allows the ability to perform on-demand scans of a MVI56E-AFC or MVI69E-AFC Enhanced Liquid & Gas Flow Computer module. The data collected during the scan will be used to generate FlowCal .CFX or Microsoft .CSV formatted files for export.



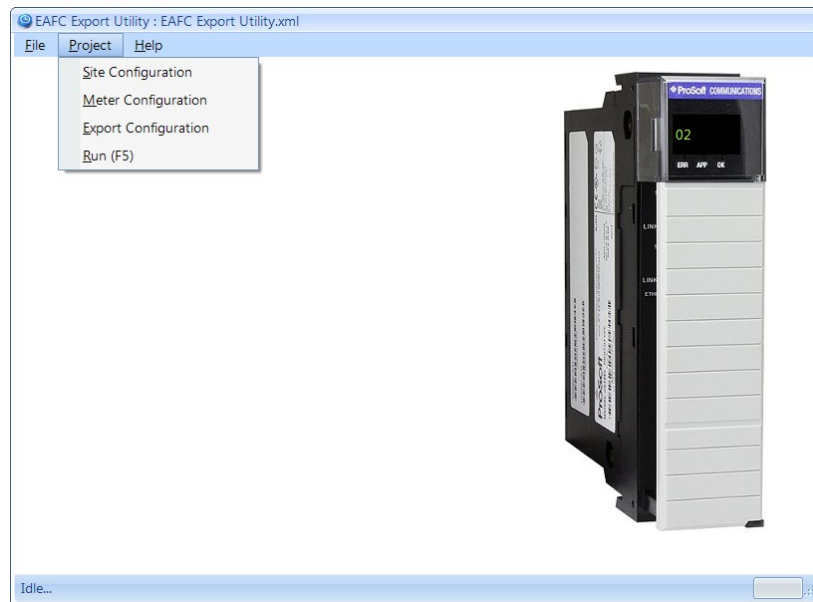
Data collected for export includes:

- Module verification data
- Site configuration and operational data
- Meter configuration, calculation, and accumulation data
- Stream configuration and analysis data
- Meter alarm data
- Meter event data
- Meter hourly and/or daily archive data
- Meter archive status data
- Meter user-specified archivables data

## 2 Menu Functions

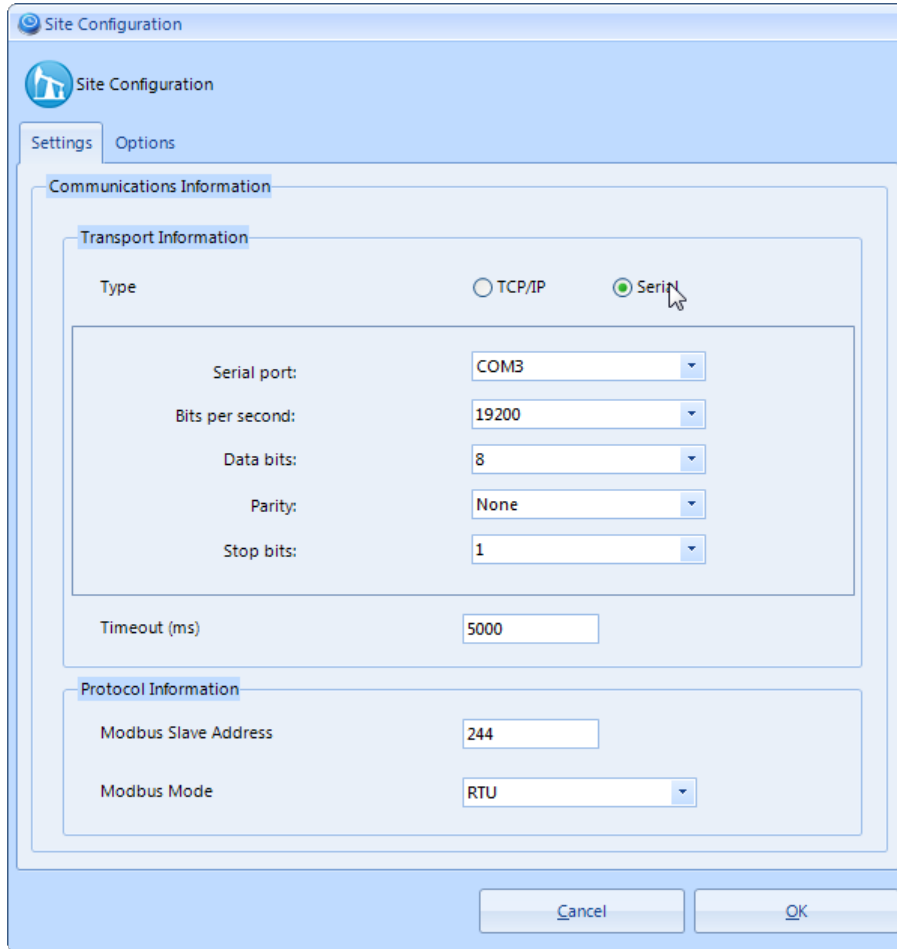
The menu consists of the following three sets:

- **File**
  - **New** – Creates a new configuration file.
  - **Open** – Opens an existing configuration file.
  - **Save** – Saves the current configuration file.
  - **Save As** – Saves the configuration to a new file.
  - **Exit** – Prompts to save and close the application.
- **Project**
  - **Site Configuration** – Open site settings.
  - **Meter Configuration** – Open meter settings.
  - **Export Configuration** – Open export settings.
  - **Run (F5)** – Poll and export file based upon configuration settings.
- **Help**
  - **About** – Open application information.
  - **View (F1)** – Open application help document.



## 2.1 Site Configuration (Settings)

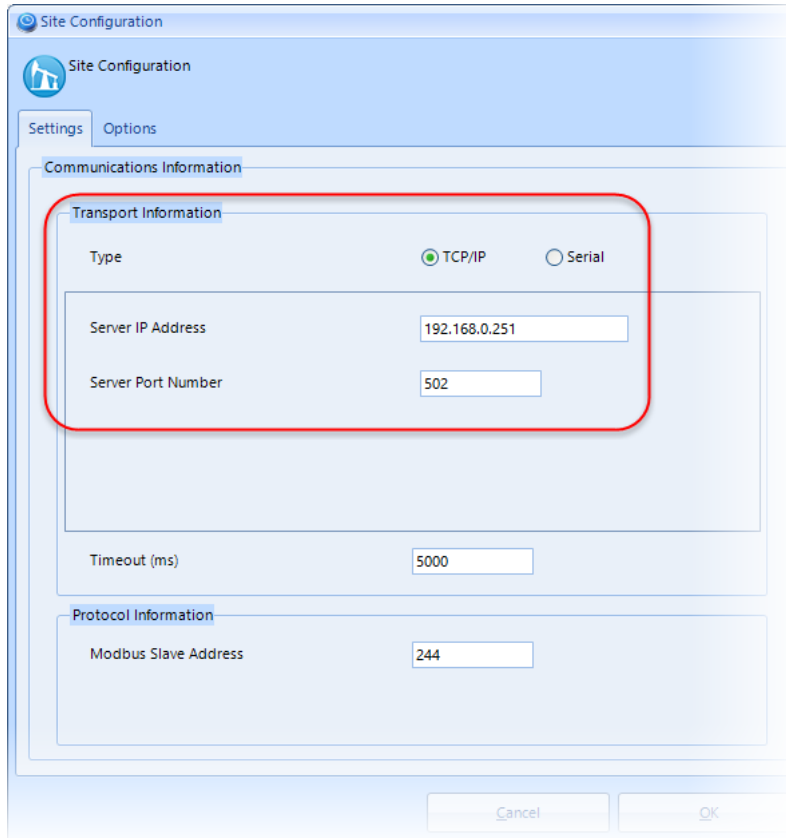
The **SITE CONFIGURATION > SETTINGS** option opens the *Site Configuration* settings page. This page allows you to configure communications and establish a connection with the MVIxxE-AFC.



*Example using module default serial port settings*

### Transport Information

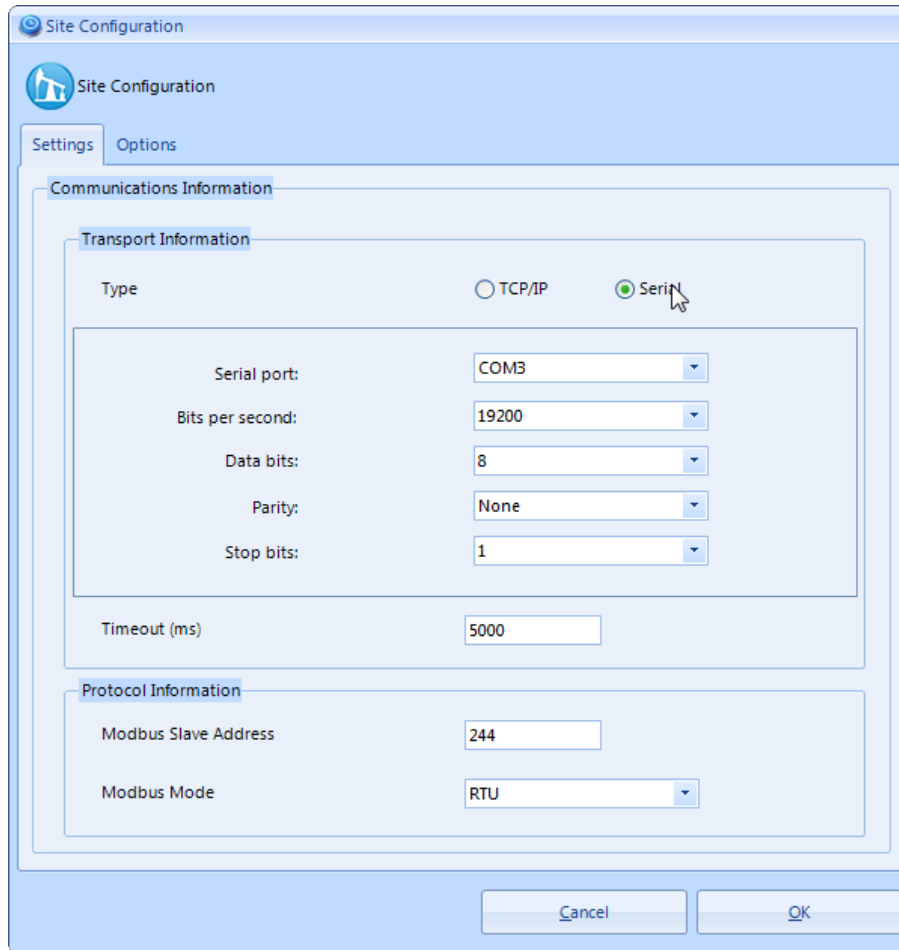
- **Type** – Select **TCP/IP** or **SERIAL** depending on how you connect to the module  
If you select **TCP/IP**, you must provide the *Server IP address* and the *Server Port number* of the module.



*Example using module default network server settings.*



- If you select **SERIAL**, you must provide serial communication parameters (*Serial Port, Bits per Second, Data Bits, Parity, Stop Bits*).



### Transport Information

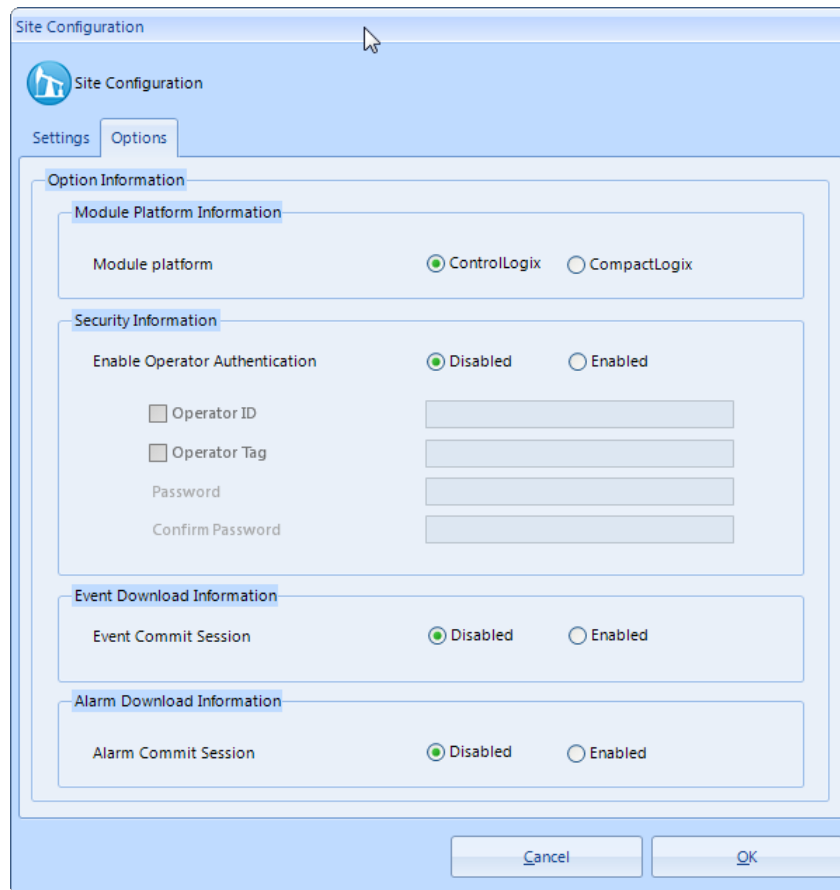
- **Timeout** – Enter a timeout value in milliseconds. The default of 5000 should be sufficient.

### Protocol Information

- **Modbus Slave Address** – Enter the slave address of the remote Modbus slave.
- **Modbus Mode** – Only visible if the *Transport Information* type is **Serial**. Select **RTU** or **ASCII**.

## 2.2 Site Configuration (Options)

The **SITE CONFIGURATION > OPTIONS** tab opens the *Site Configuration* options.



### Option Information

- **Platform Information** –Select the appropriate module platform.
- **Security Information** – If enabled, you must enter login credentials. The user performing the scan must know the login credentials entered here.

#### **Operator Privileges**

The EAFC Export Utility will require at most the following privileges for operation (0x20030000):

- 16: Log download commit
  - Required only for event/alarm commit session
- 17: Logging
- 29: Operator List
  - Required for event download operator id/tag/name reference
- **Event Download Information**

- **Event Commit Session** – If enabled, the application sends the commit command to close the download session. For example, a single download and export may produce 10 events. However, when the next run occurs, and no new events have occurred, the download and export returns no events. When a third run occurs, and a single new event had occurred since the last commit, the download and export will return that 1 new event.
  - If disabled, you'll get all events not committed, however, the application will send the abandon command to close the download session. For example, a single download and export may produce 10 events. However, when the next run occurs, and no new events have occurred, the download and export still returns the 10 events. When a third run occurs, and a single new event occurred since the last commit, the download and export will return the same 10 events plus the 1 new event for a total of 11 events.
- **Alarm Download Information**
    - **Alarm Commit Session** – Similar to the Event Commit Session, except that it returns alarms the same way.

#### Site Configuration Special Notes

The following special notes should also be understood with regard to the site configuration settings:

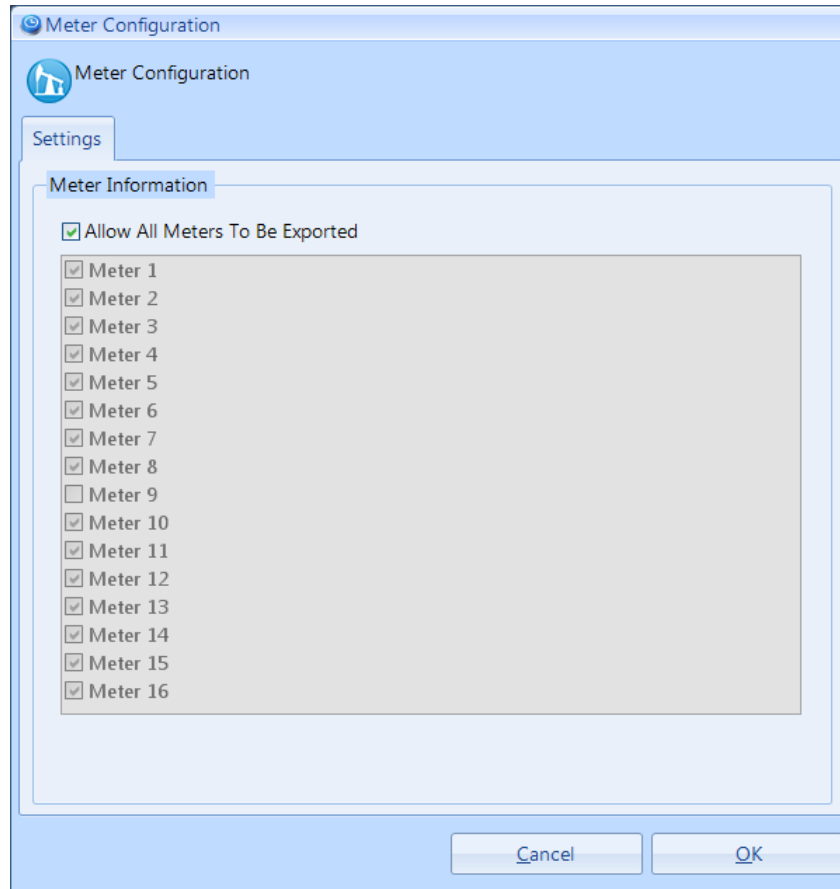
- If commit session is enabled for the *Alarm/Event* download configuration, only the new alarms/events from the previous run will be downloaded from the module.

### 2.3 Meter Configuration (Settings)

This page allows you to filter which meters will be polled and exported.

### Meter Information

- **ALLOW ALL METERS TO BE EXPORTED** – When enabled, all meters are allowed to be exported. When disabled, the user may specify which meters are allowed to be exported.



### Meter Configuration Special Notes:

The following special notes should also be understood with regard to the meter configuration settings:

- The export function will only export meters which are both allowed to be exported in the EAFC Export Utility and which are enabled in the module.
- If there are no enabled meters in the module, the export function is bypassed.

## 2.4 Export Configuration (Settings)

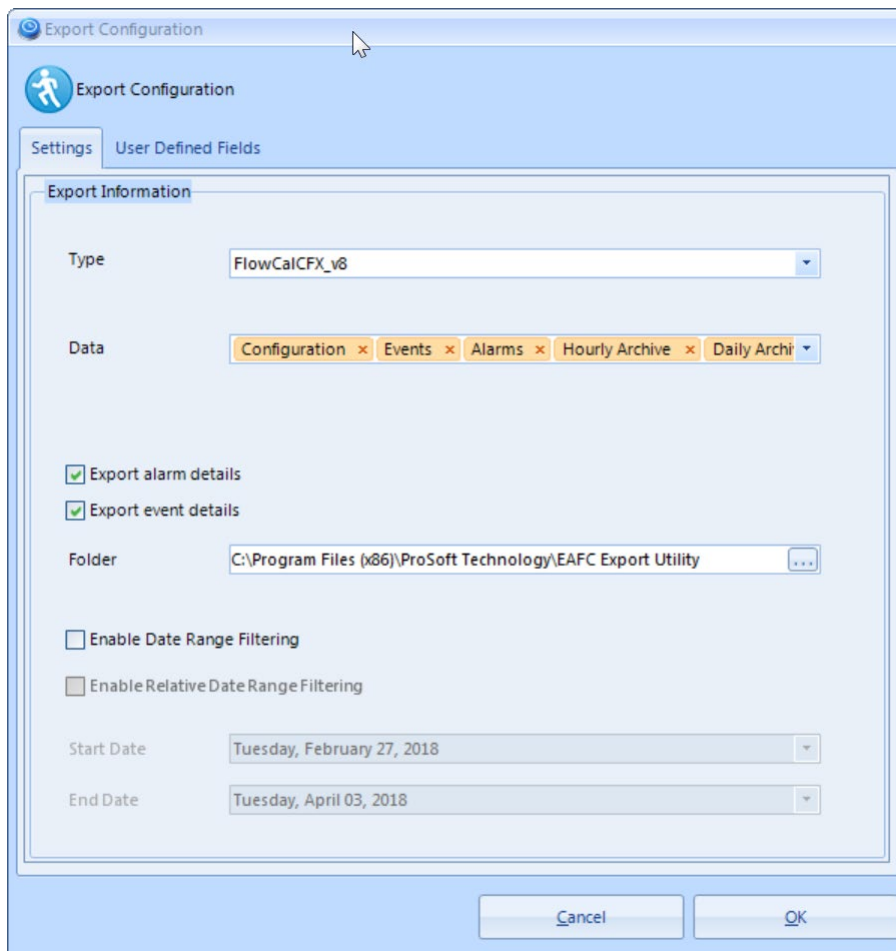
This page allows you to set up your export information.

### Export Information

- **Type** – Select the appropriate export format option from the drop-down list.

Available options include:

- **CSV** – Exports the data as a Microsoft comma separated variable (CSV) file.
- **FlowCalCFX\_v5** – Exports the selected data sections to a FlowCal Common Exchange Format (CFX) version 5.1.0 compatible file.
- **FlowCalCFX\_v7** – Exports the selected data sections to a FlowCal Common Exchange Format (CFX) version 7.0.6 compatible file.
- **FlowCalCFX\_v8** – Exports the selected data section to a FlowCal Common Exchange Format (CFX) version 8.2.1 compatible file.



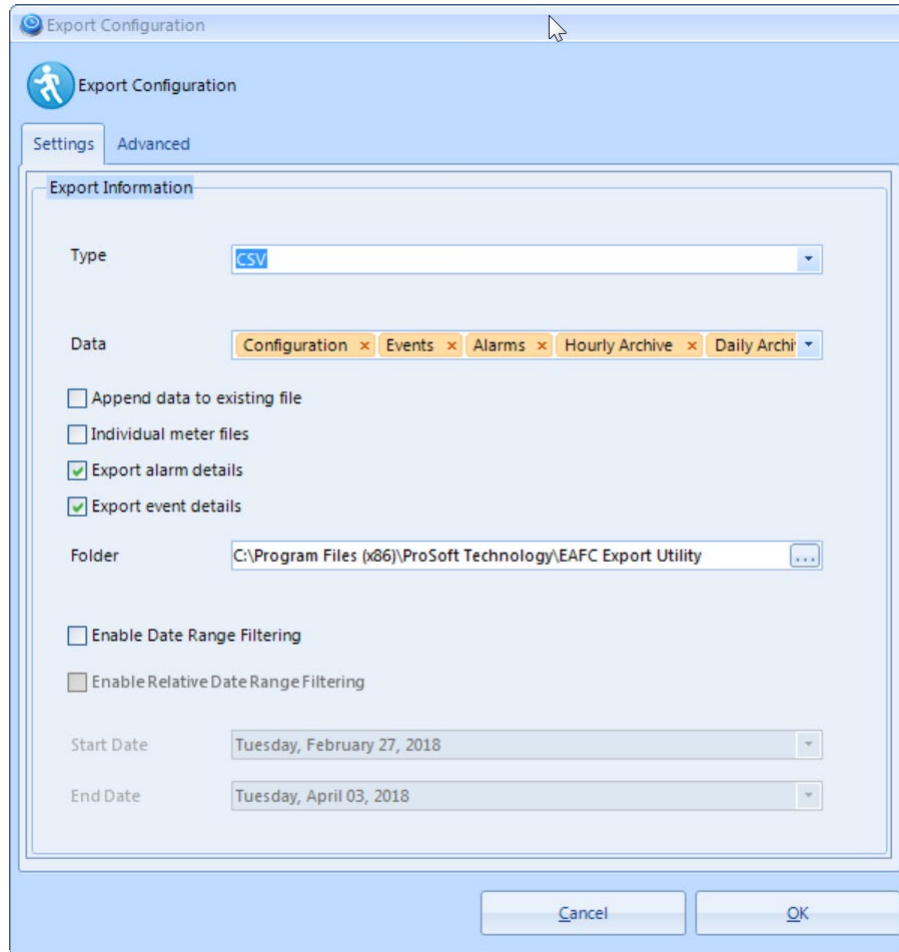
### Export Configuration FlowCal Export Type Special Notes:

- FlowCal version 5 export type:
  - FlowCal version 5 export supported sections include:
    - Header

- 
- Configuration
  - Events
  - Alarms
  - History
  - Terminator
  - The FlowCal version 5 History section may be populated from either the meter hourly or daily archive records.
  - The FlowCal version 5 History section will be populated with History Type 4 records.
  - The FlowCal version 7 or version 8 export types:
    - The FlowCal version 7 or version 8 export supported sections include:
      - File Header
      - Meter Configuration
      - Meter Events
      - Meter Alarms
      - Periodic Flow Data History
      - Alternate Periodic Flow Data History
      - Liquid Product
      - File Terminator
    - The FlowCal version 7 or version 8 Periodic Flow Data History section will be populated from the meter hourly archive records.
    - The FlowCal Alternate Periodic Flow Data History will be populated from the meter daily archive records.
    - The FlowCal version 7 or version 8 history section record types:
      - Gas Meters: History Type 2 records
      - Liquid Meters: History Type 13 records
  - The generated export filename extension will be .cfx for **FlowCal** export types.
  - The export function generates a single file per enabled meter using the selected date range or up to the last 35 days of data from the module for **FlowCal** export types.

## Export Information

- **Type – CSV**



For the **CSV** export type, the following additional configuration options are available:

- **APPEND DATA TO EXISTING FILE** – If selected, the export appends to an existing file if one exists. If not selected, the export function deletes the existing file and creates a new file per section.
- **INDIVIDUAL OR CONSOLIDATED METER FILES** –The default is **INDIVIDUAL METER FILES**. Consolidated meter files will export meter data to a common file for all meters. Individual meter files will export meter data to a file per meter.

### **Export Information CSV export type special notes:**

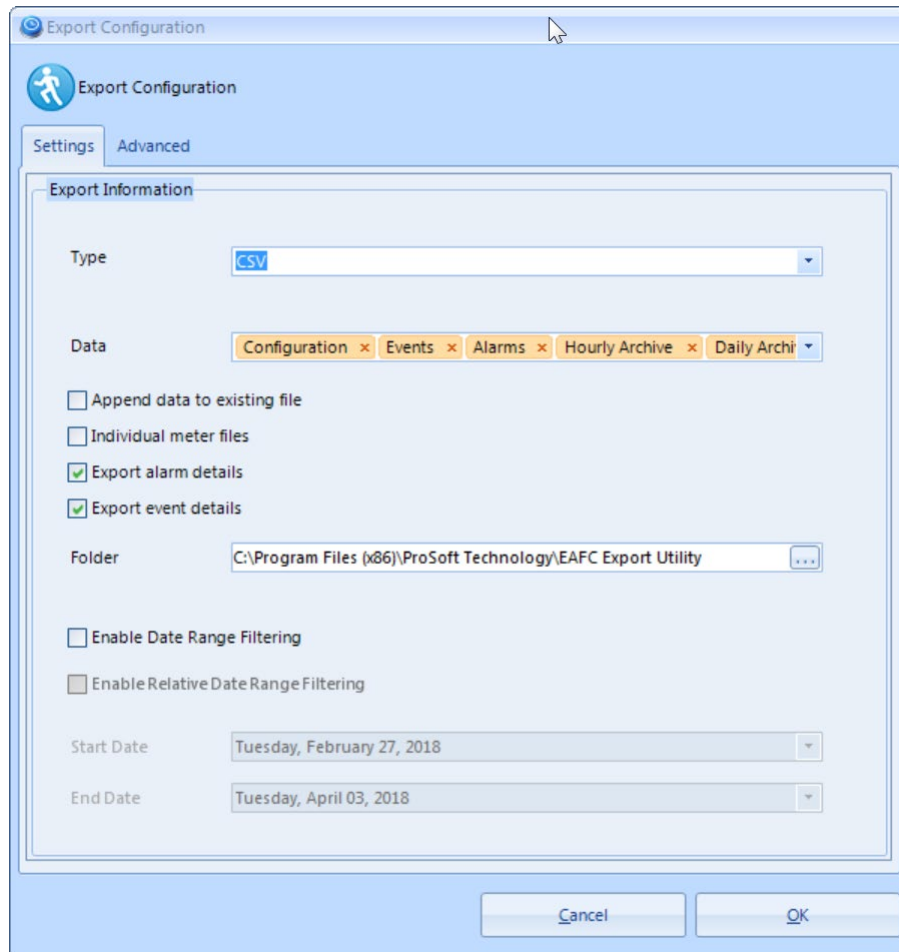
The following special notes should also be understood with regard to the export configuration settings CSV export type options:

- If the **Consolidated meter files** option is selected, but the **Append data to existing file** is not, the export function creates a new file per section with all metered data.
- If the **Consolidated meter files** and the **Append data to existing data** options are both selected, the export appends to an existing file per section with all metered data.
- If the **Individual** option is selected, but the **Append data to existing file** is not, the export function creates a new file per section for each enabled meter.
- If the **Individual** and the **Append data to existing file** options are both selected, the export function appends to an existing file per section for each enabled meter.
- The export filename extension will be .csv for **CSV** export types.



## Export Information

- **Data** – Allows you to specify the type of data to export.

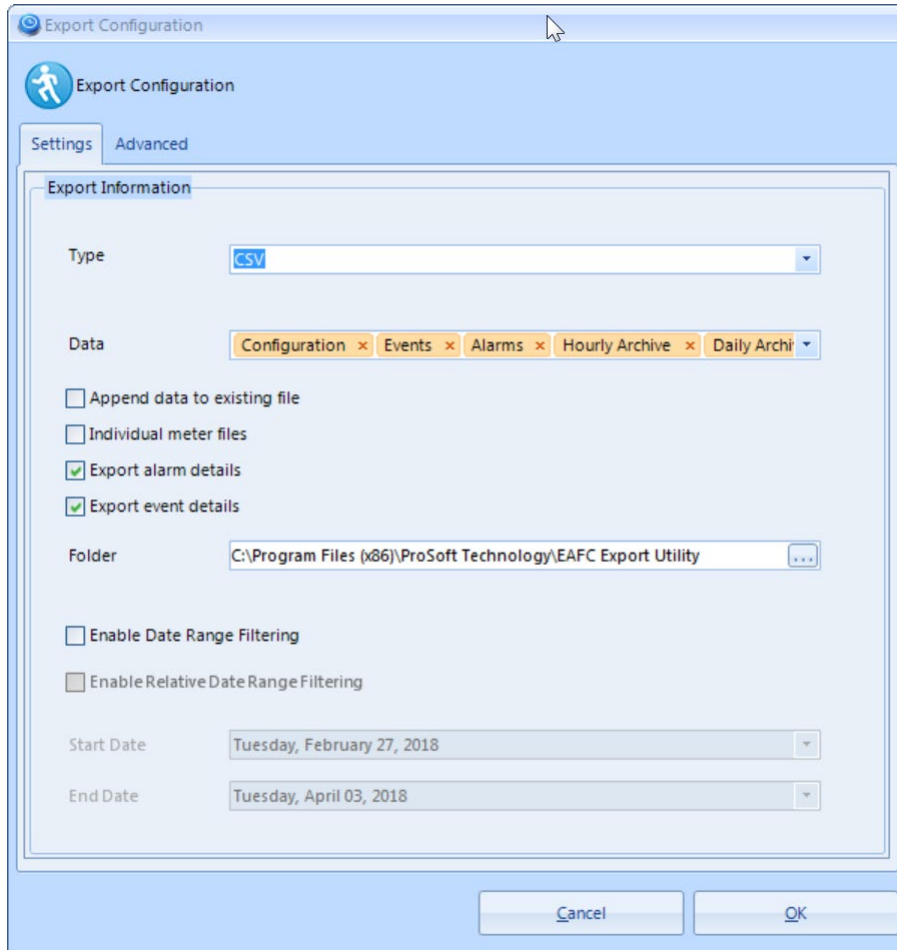


Available meter data types include:

- Configuration
- Events
- Alarms
- Hourly Archive
- Daily Archive

### Export Information

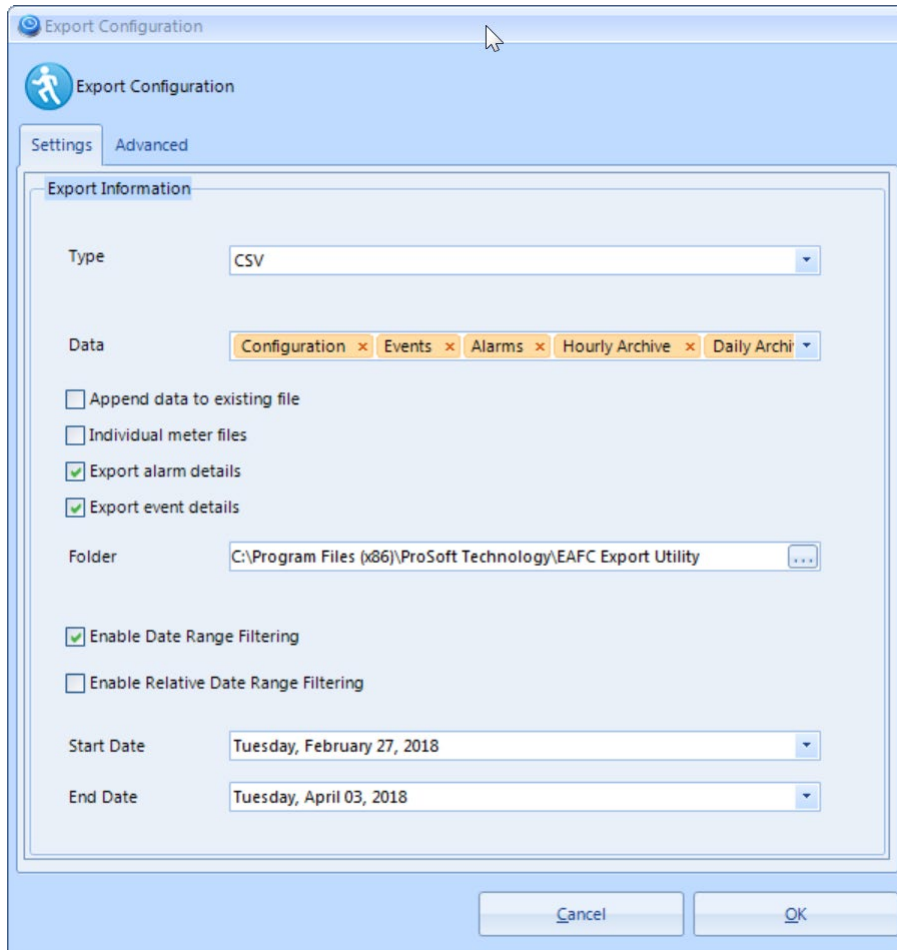
- **Folder** – The folder location in which the export file(s) will be generated.



- **Enable alarm details** – Enable to perform alarm sub element comparison detail and export alarm sub element changes as individual alarm records. Alarm detail records are exported in addition to alarm records.
- **Enable event details** – Enable to perform event sub element comparison detail and export event sub element changes as individual event records. Event detail records are exported in addition to event records.

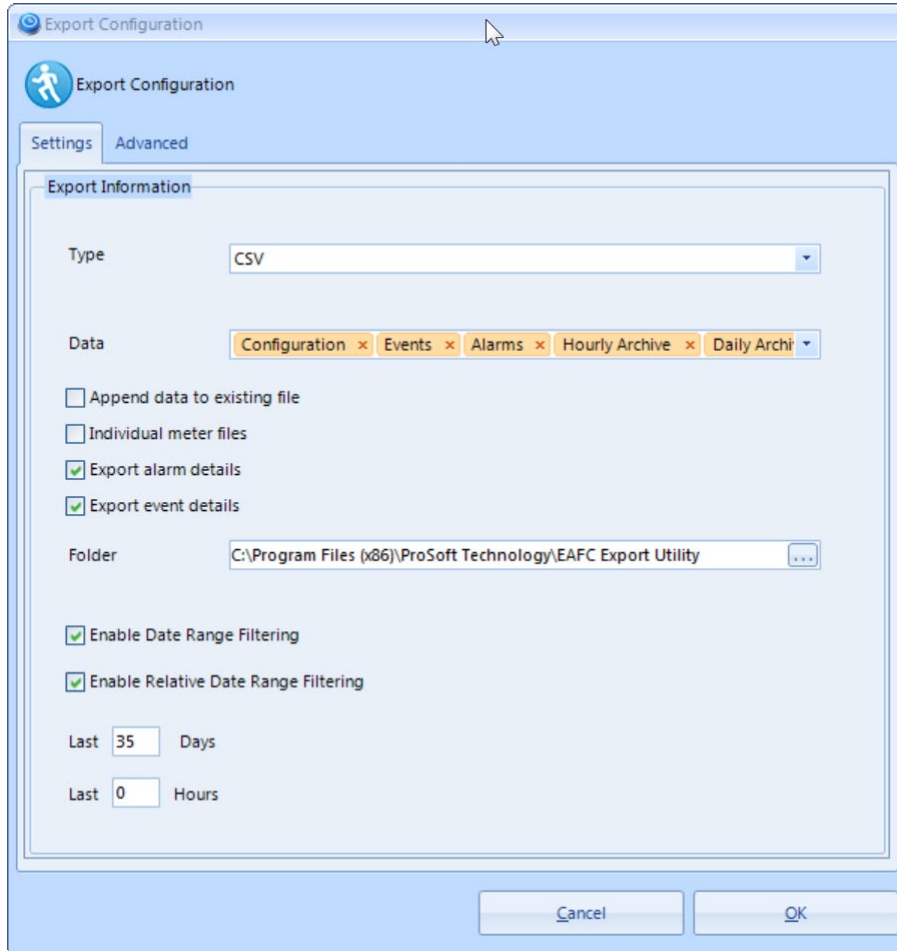
### Export Information

- **ENABLE DATE RANGE FILTER** – Check this box to exclude meter data timestamped outside the entered *Start Date* and *End Date* range.



### Export Information

- **Enable Relative Date Range Filtering** – When **Enable Date Range Filter** is selected, check **Enable Relative Date Range Filtering** to exclude meter data older than the specified number of days and/or hours.



### **Export Configuration Special Notes:**

The following special notes should also be understood with regard to the export configuration settings:

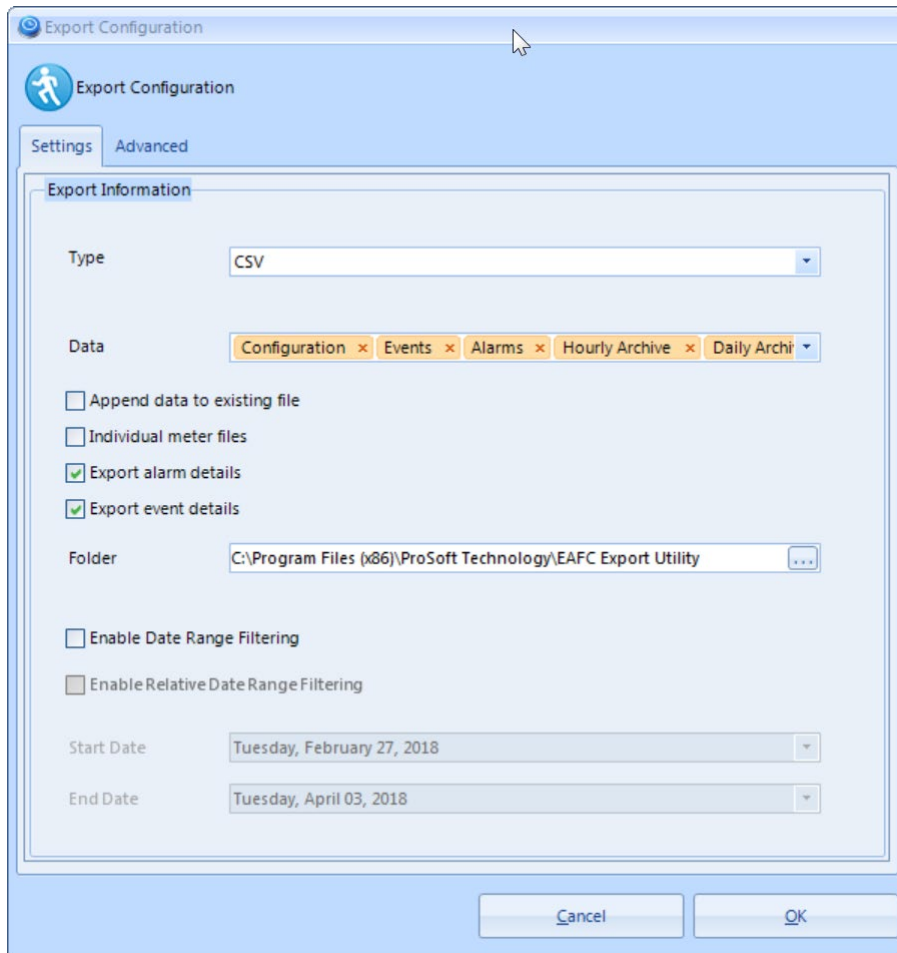
- The export function will be bypassed if the module is not in a released state. Module released state requires the following:
  - PLC to be online,
  - Module to have received a valid wall clock from the PLC, and
  - At least one meter to be enabled in the module.
- The generated export filename will be the meter tag name. If the meter tag name is invalid, a convention of M##, where ## represents a 2-digit decimal representation of the meter ID, 1 based within the module.
- The generated export file(s) will be generated in the specified export configuration folder. If a file exists with the same name during export, the existing file is overwritten.

## **2.5 Run**

The **RUN (EXECUTE)** option starts the scan process and exports the file(s) to the designated folder. You can also press F5 to initiate the scan.

### 3 Export Configuration (Advanced Tab)

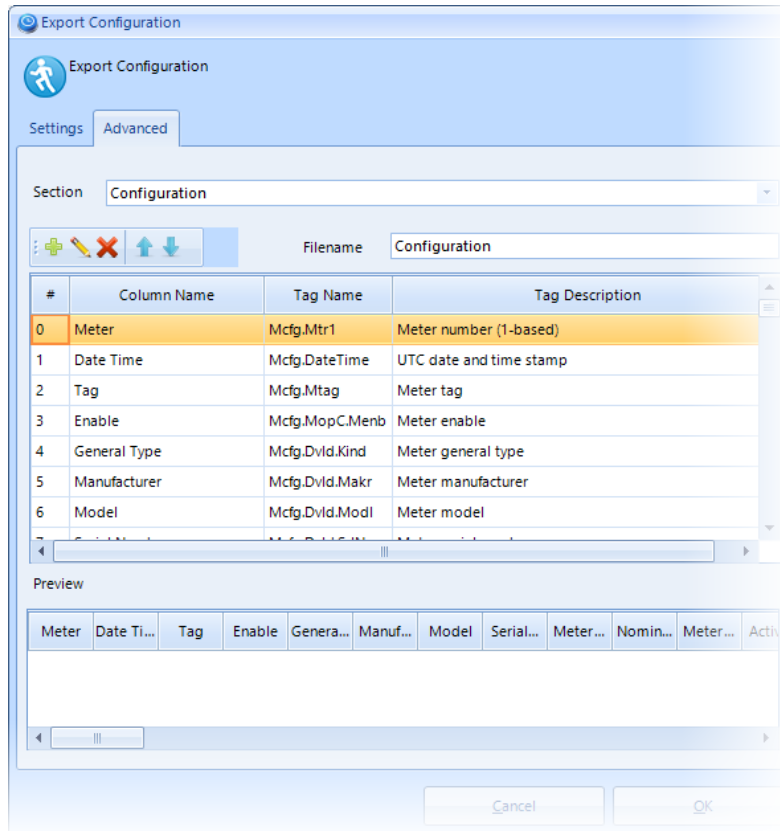
The *Advanced* tab is visible if the selected export *Type* is **CSV**.



Click the tab to perform *Column Mapping* as described in the next section.

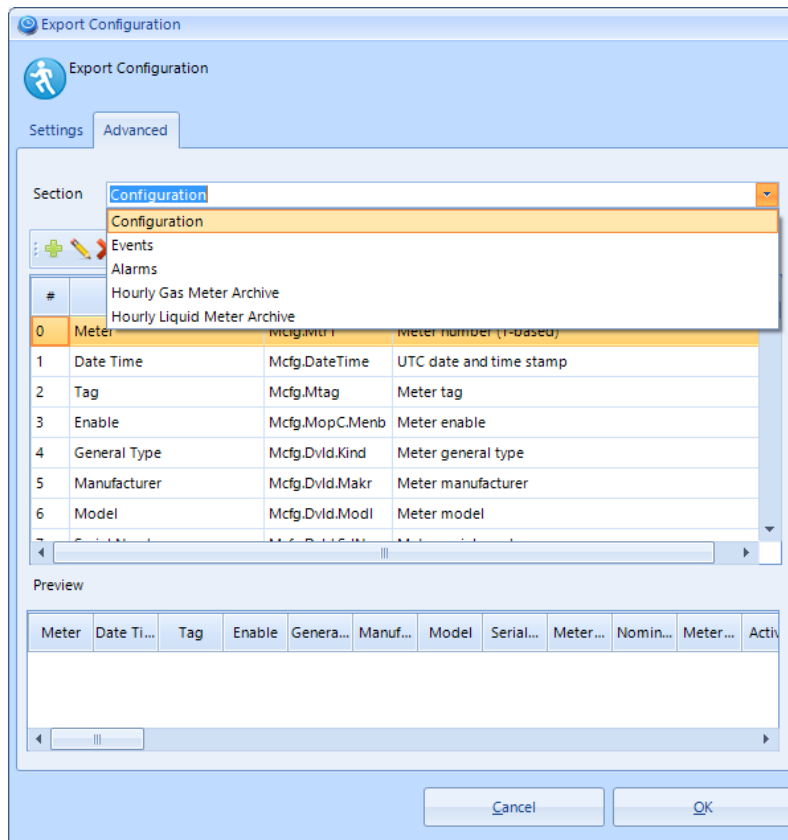
### 3.1 Column Mapping Interface

Choose *Export Configuration* export type **CSV > ADVANCED** to open the *Advanced* page.



### Column Mapping Configuration

- **Section** – This drop-down list allows you to select the meter data section for the column mapping definitions.



Available meter data sections include:

- Configuration
- Events
- Alarms
- Hourly Gas Meter Archive
- Hourly Liquid Meter Archive
- Daily Gas Meter Archive
- Daily Liquid Meter Archive



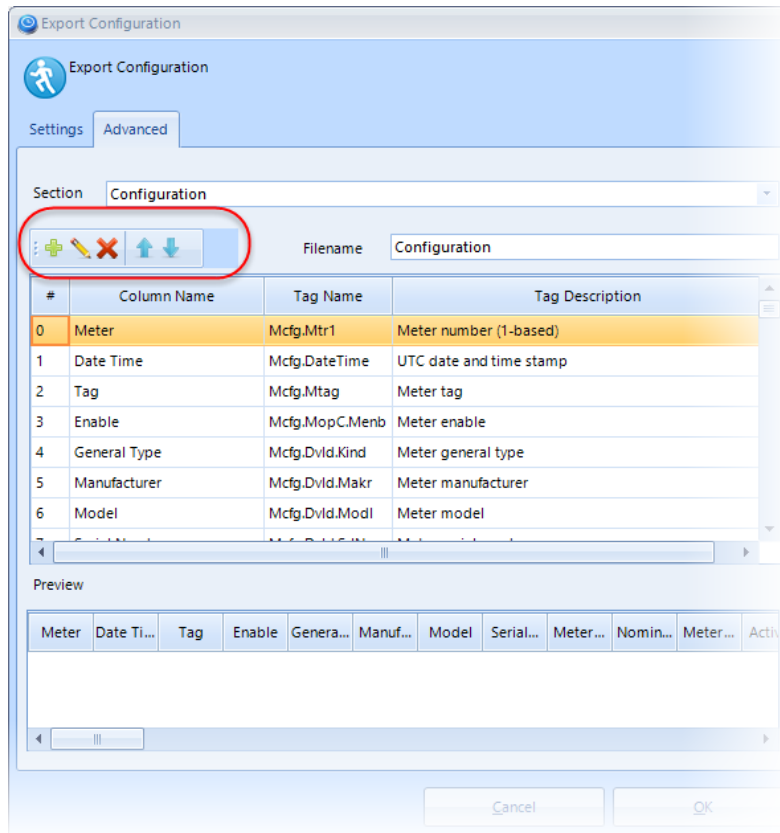
### Column Mapping Special Notes:

The following special notes should also be understood with regard to the export configuration column mapping settings:

- E AFC Modbus Dictionary sections available per column mapping meter data section:
  - Configuration Section
    - (MdVf) Module Verification
    - (Icfc) Site Configuration
    - (Iopr) Site Operational
    - (Mcfg) Meter Configuration
    - (Scfg) Meter Active Stream Configuration
    - (Scaz) Meter Active Stream Analysis
    - (Musr) Meter User-Specified Archivables
  - Events Section
    - Source tag data is restricted to event log record fields and derived fields.
  - Alarms Section
    - Source tag data is restricted to alarm log record fields and derived fields.
  - Meter History Archive Sections
    - (Scaz) Meter Active Stream Analysis
    - (Musr) Meter User-Specified Archivables
    - (Mrsl) Meter Calculations
    - (Macm) Meter Accumulations
    - (Sacm) Stream accumulations
    - (MrkS) Meter Archive Status
- Separate section templates are used based upon the meter product and archive type, such as:
  - Hourly Gas Meter Archive
  - Hourly Liquid Meter Archive
  - Daily Gas Meter Archive
  - Daily Liquid Meter Archive

## Column Mapping Configuration

- **Column Management**



Available column management features include:

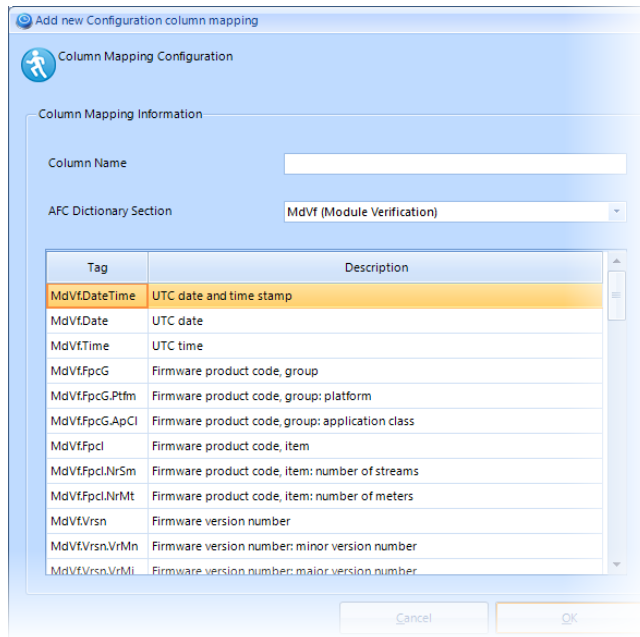
- **Add** – Add a new column mapping.
- **Edit** – Edit the selected column mapping.
- **Remove** – Remove the selected column mapping.
- **Up Arrow** – Move the selected column mapping up.
- **Down Arrow** – Move the selected column mapping down.
- **Double-click** – Edit the selected column mapping.
- **Preview Grid** – Allows a preview per section mapping definition.

## Column Mapping Configuration

- **Filename** – The meter data section filename to be exported.

### 3.2 Adding and Editing Column Mapping by Section

- 1 Click the **ADD** button. The *Column Mapping Configuration* page opens.

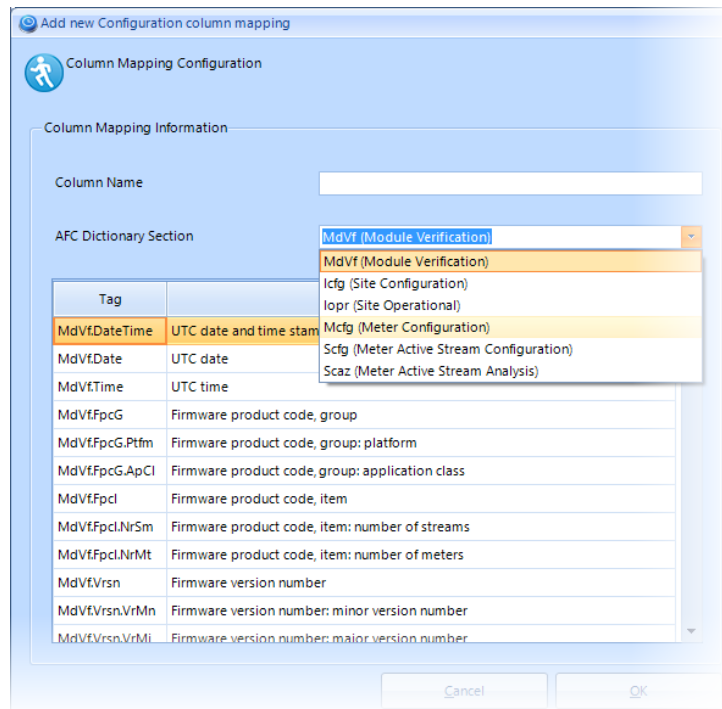


#### Column Mapping Information

- **Column Name:** The desired name of the meter data section column.

### Column Mapping Information

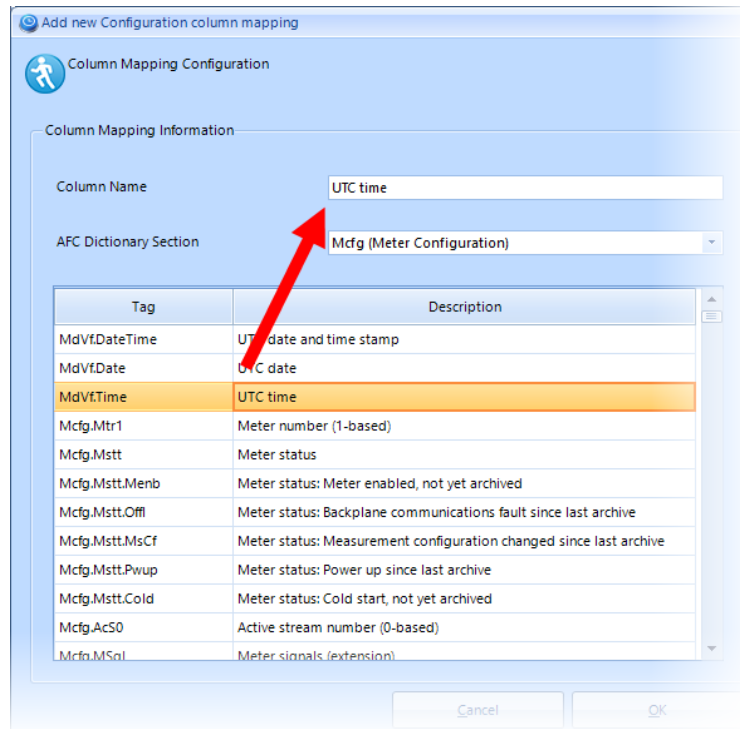
- **E AFC Dictionary Section** – This is the E AFC Modbus Dictionary section for the meter data. The tag list is filtered by the selected section.



- **Tag** – Dictionary tag name.
- **Description** – Dictionary tag description.

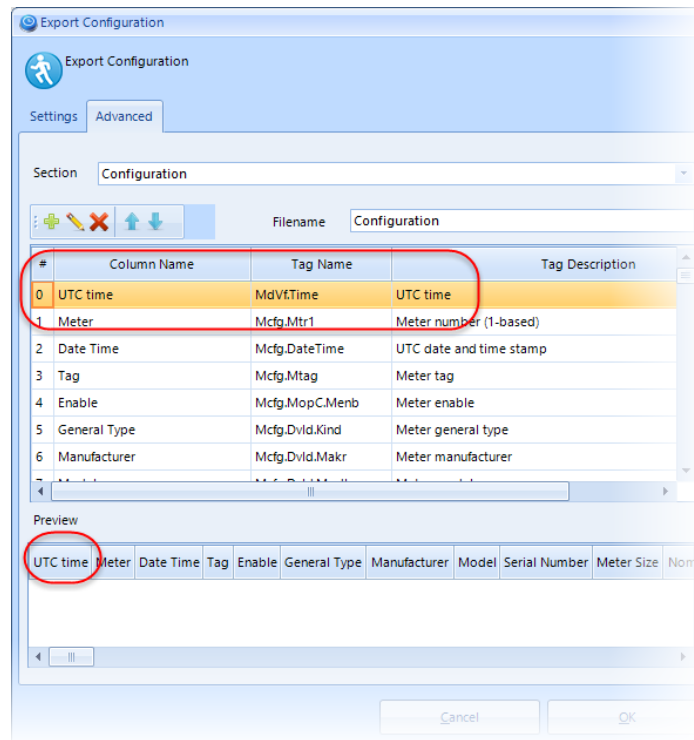
### Column Mapping Information

**Double-click or Selection-change** – Copies the selected tag description to be the default column name.



As you make your selections, the *Column* and *Tag Names* change to match each section.

2 Click **OK**. Your new column definition appears in the *Preview* section.



3 Repeat the process until you are satisfied with your column definitions.

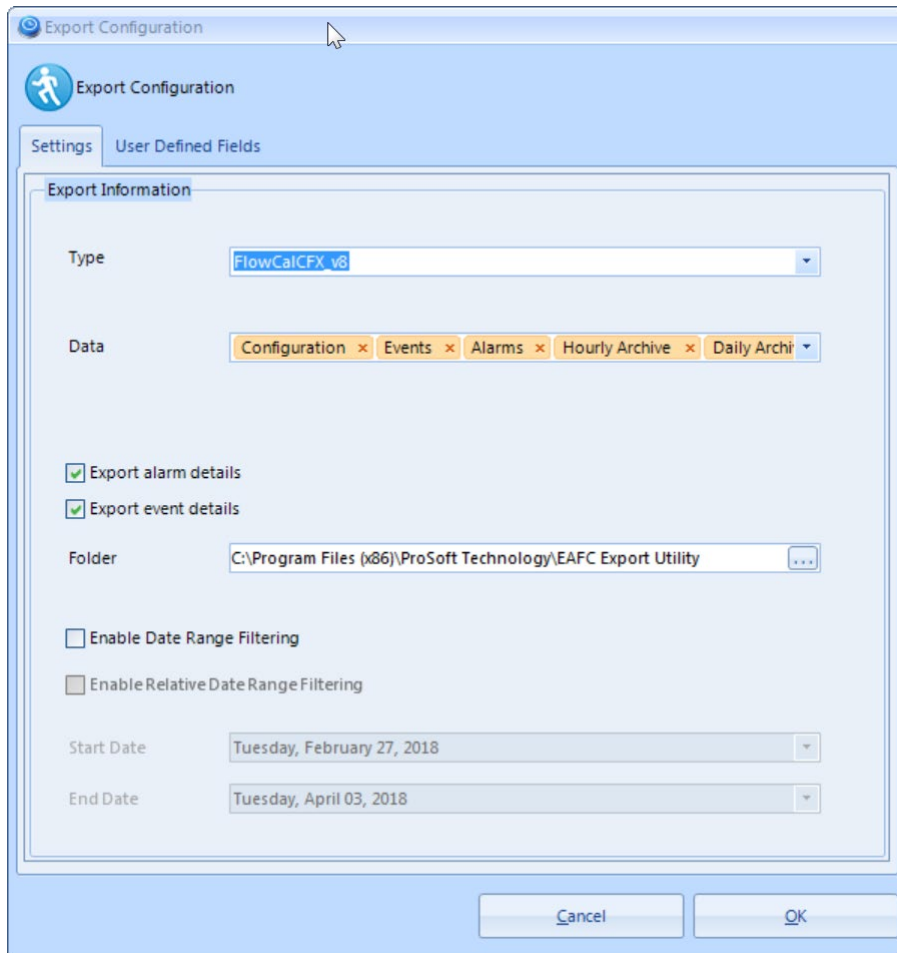
**Remember...**

- Use the *Edit* button to make changes.
- If you want to move your new column, use the *Up* or *Down* arrows.
- If you want to delete a column, use the *Remove* button.

4 Click **OK** when complete.

## 4 Export Configuration (User Defined Fields Tab)

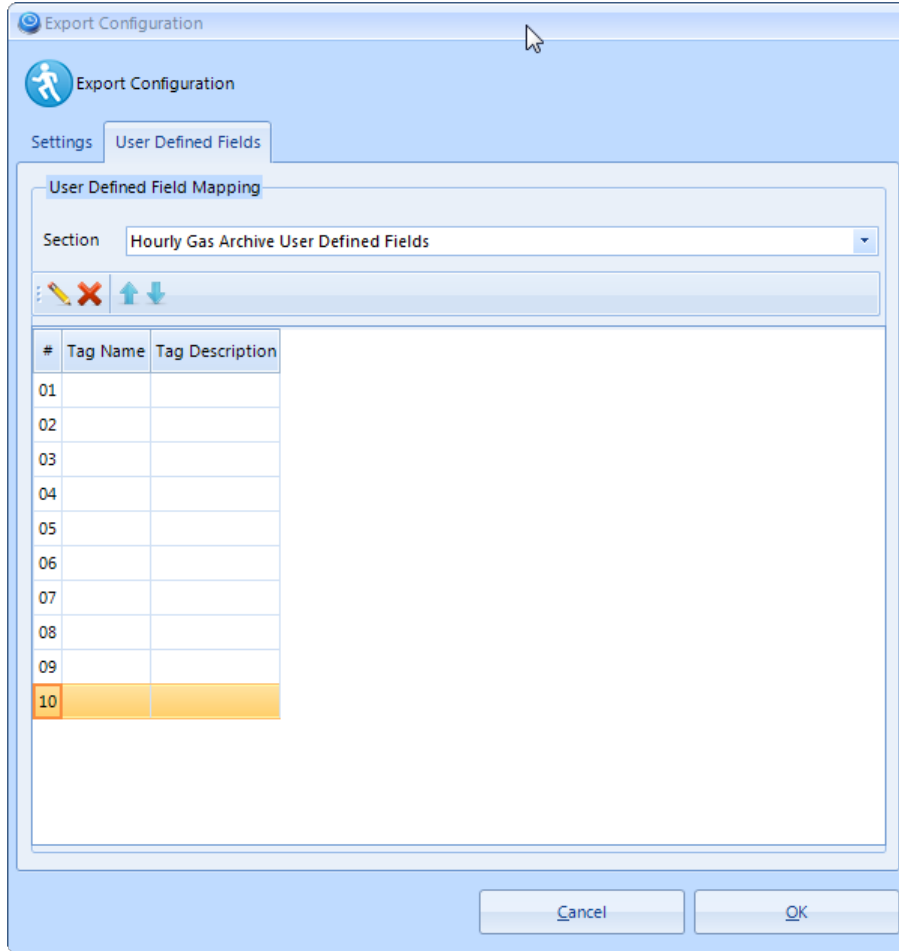
The *User Defined Fields* tab is visible if the selected export *Type* is **FlowCal**.



Click the tab to perform *User Defined Field Mapping* as described in the next section.

### 4.1 User Defined Field Mapping Interface

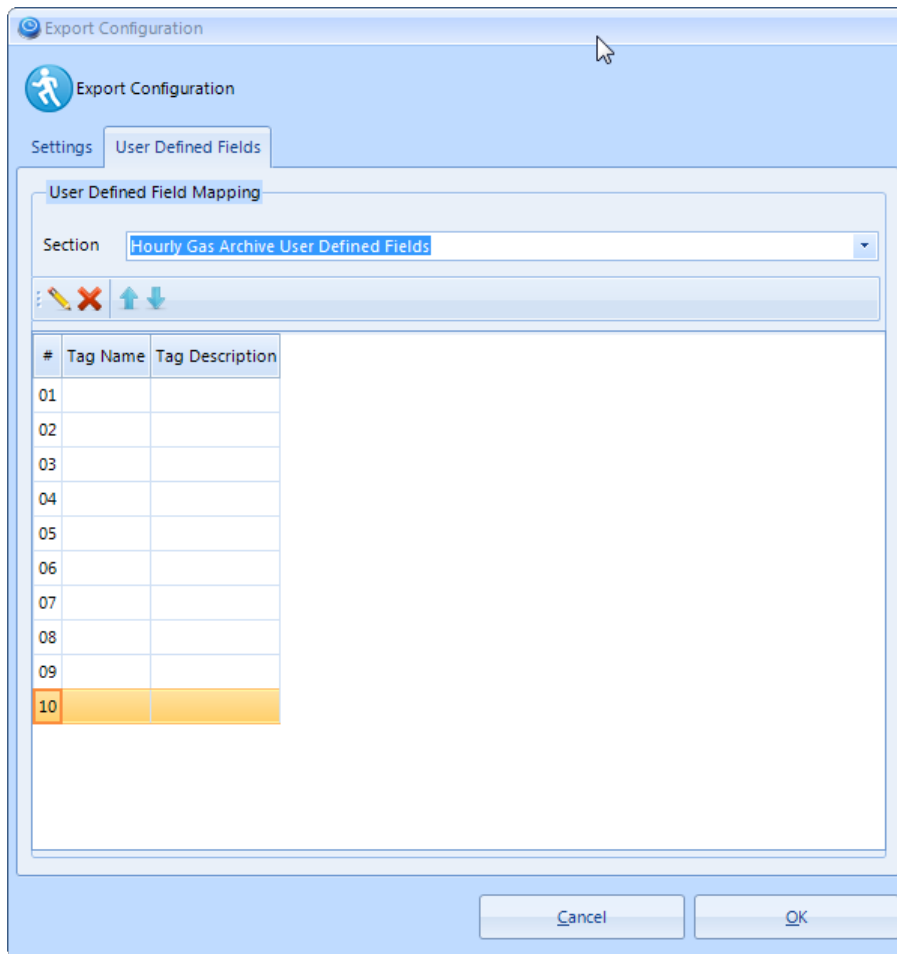
Choose one the *Export Configuration* export types for **FLOWCAL > USER DEFINED FIELDS** to open the *User Defined Fields Mapping* page.





### User Defined Field Mapping

- **Section** – This drop-down list allows you to select the FlowCal CFX file format dependent user defined fields section for user defined field mapping definitions.



The available user defined field sections are based upon the version of the selected FlowCal CFX file format export type.

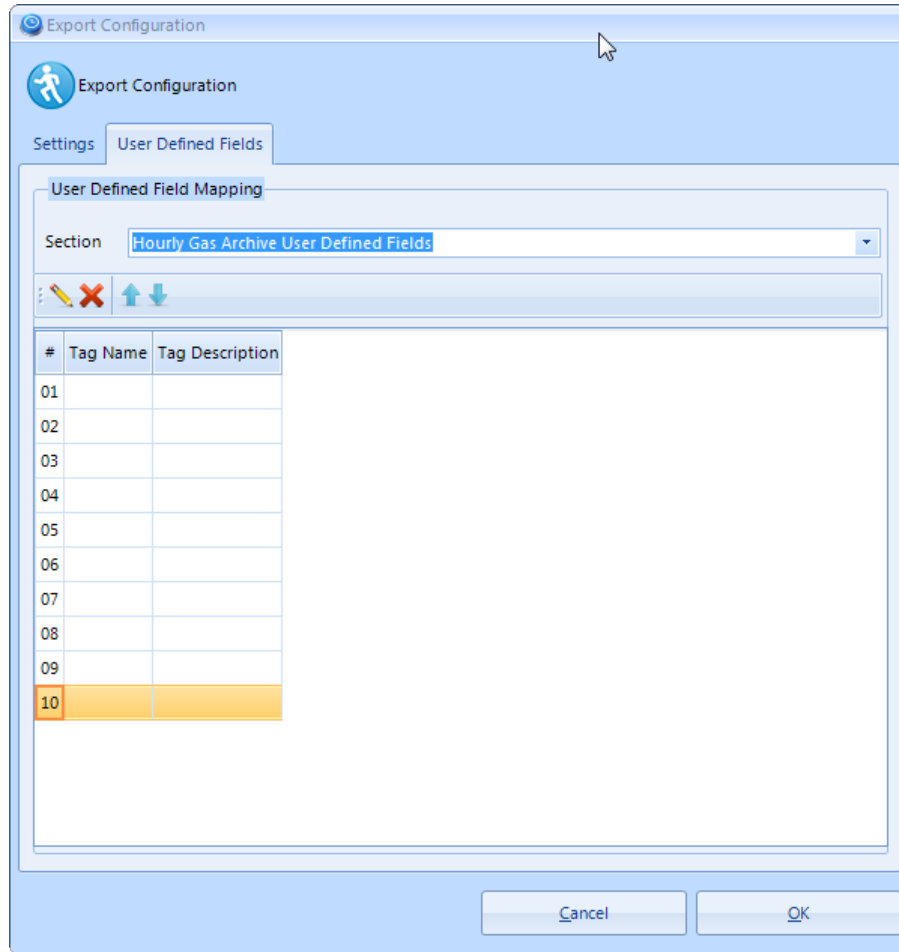
### **User Defined Fields Mapping Special Notes:**

The following special notes should also be understood with regard to the export configuration user defined field mapping settings:

- FlowCal CFX version 5 User Defined Field Sections
  - Configuration
  - History
- FlowCal CFX version 7 or version 8 User Defined Field Sections
  - Hourly Gas Archive User Defined Fields
  - Hourly Liquid Archive User Defined Fields
  - Daily Gas Archive User Defined Fields
  - Daily Liquid Archive User Defined Fields
- EAFC Modbus Dictionary sections available per user defined field section:
  - FlowCal CFX version 5 Configuration User Defined Field Section
    - (MdVf) Module Verification
    - (Icfg) Site Configuration
    - (Iopr) Site Operational
    - (Mcfg) Meter Configuration
    - (Scfg) Meter Active Stream Configuration
    - (Scaz) Meter Active Stream Analysis
    - (Musr) Meter User-Specified Archivables
    - (MrsI) Meter Calculations
    - (Macm) Meter Accumulations
    - (Sacm) Stream accumulations
    - (MrkS) Meter Archive Status
  - FlowCal CFX version 5, 7, or 8 History User Defined Field Section
    - (Scaz) Meter Active Stream Analysis
    - (Musr) Meter User-Specified Archivables
    - (MrsI) Meter Calculations
    - (Macm) Meter Accumulations
    - (Sacm) Stream accumulations
    - (MrkS) Meter Archive Status

## User Defined Field Mapping

- **User Defined Field Management**

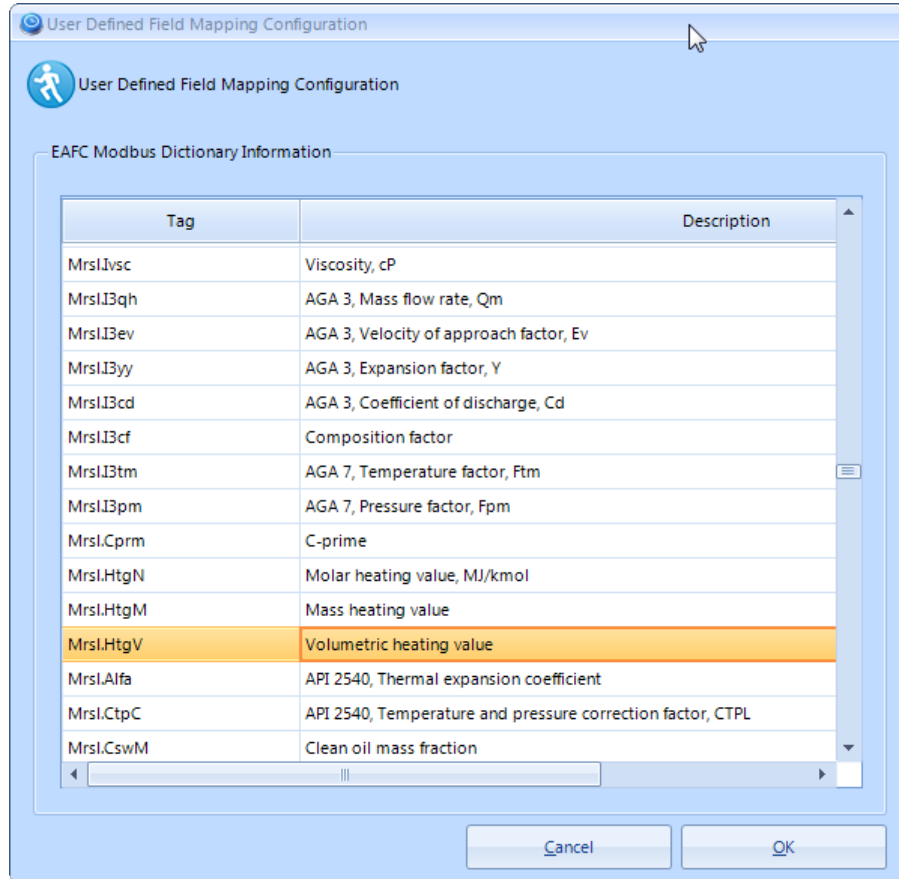


Available user defined field management features include:

- **Edit** – Edit the selected user defined field mapping.
- **Remove** – Remove the selected user defined field mapping.
- **Up Arrow** – Move the selected user defined field mapping up.
- **Down Arrow** – Move the selected user defined field mapping down.
- **Double-click** – Edit the selected user defined field mapping.

## 4.2 Editing a User Defined Field Column

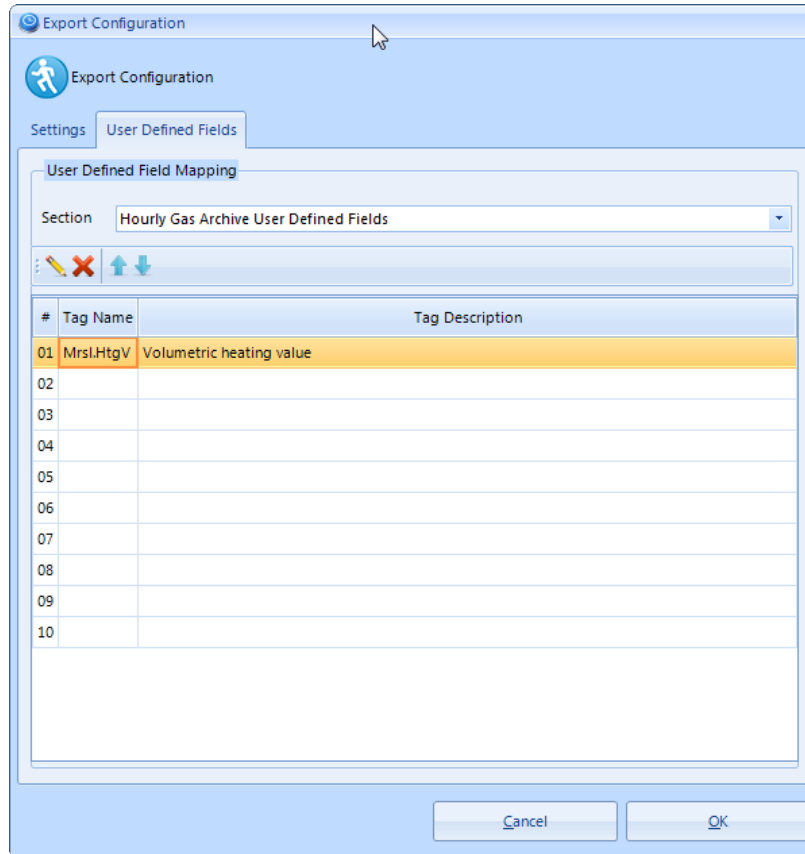
- 1 Click the **ADD** button. The User Defined Field Mapping Configuration page opens.



### EAFC Modbus Dictionary Information

- **Tag** – Dictionary tag name.
- **Description** – Dictionary tag description.

- 2 Select the desired E AFC Modbus Dictionary tag to map to the user defined field and click **OK**. Your new user defined field mapping appears in the selected user defined field index.



- 3 Repeat the process until you are satisfied with your user defined field mappings for each user defined field section.

**Remember...**

- Use the *Edit* button to make changes.
- If you want to move your new user defined field mapping, use the *Up* or *Down* arrows.
- If you want to delete a user defined field mapping, use the *Remove* button.

- 4 Click **OK** when complete.

## 5 Running a Scan

- 1 Connect your laptop to the MVIxxE-AFC. You can connect using the Ethernet port on the front of the module or connect to the Serial port located at the bottom of the module.
- 2 Start the EAFC Export Utility.
- 3 Click **FILE > NEW** to name and save this configuration setup.
- 4 Click Project > Site Configuration.
- 5 Enter your Site Configuration parameters and Site Configuration options.
  - a. **Transport Information**
    - i. TCP/IP – Server IP Address, Server Port Number, or
    - ii. Serial – Serial Port, Bits per second, Data bits, Parity, Stop Bits)
  - b. **Timeout in milliseconds**
  - c. **Protocol Information** (Modbus Slave Address, Modbus Mode)
- 6 Click **OK** to save your configuration.
- 7 Click Project > Export Configuration.
- 8 Enter your export parameters.
  - a. Type of output
  - b. Data preferences
  - c. Destination folder
  - d. Date range
- 9 Click **OK** to save your configuration.
- 10 Click **PROJECT > RUN** to run the scan.

## 6 Optional Command Line Arguments

On startup, the application loads the default configuration file. Command line arguments, if provided and valid, will override the values loaded from the default configuration file. Command line arguments are processed in the order received, which the sole exception for the *Execute.Run* argument, which if provided is always processed last.

| Argument                  | Description  |
|---------------------------|--|
| Configuration.File        | Path to export folder.<br>Configuration.File="C:\Configuration\Site1.xml"  |
| Module.Transport          | LOCAL: local serial port channel connection.<br>REMOTE: remote network channel connection.<br>Module.Transport=REMOTE  |
| Module.Port               | [PORT];[BAUD RATE][PARITY][DATA BITS][STOP BITS]<br>Module.Port=COM8:9600N81   |
| Module.Network            | [IP ADDRESS];[PORT NUMBER]<br>Module.Network=192.168.0.251:502   |
| Module.Timeout            | Modbus transaction timeout in milliseconds.<br>Default 5000ms.<br>Module.Timeout=5000  |
| Module.SlaveAddress       | Modbus slave address. Value 1-247.<br>Default 244.<br>Module.SlaveAddress=244  |
| Module.Mode               | Modbus protocol mode<br>Default RTU.<br>Valid values: RTU, ASCII<br>Module.Mode=RTU  |
| Module.EventCommitSession | TRUE: Use commit session on event download.<br>FALSE: Use abandon session on event download.<br>Module.EventCommitSession=TRUE   |
| Module.AlarmCommitSession | TRUE: Use commit session on alarm download.<br>FALSE: Use abandon session on alarm download.<br>Module.AlarmCommitSession=TRUE   |
| Module.Login              | [OPERATOR ID];[PASSWORD]<br>If provided, use OPERATOR ID and PASSWORD credentials for authentication.<br>OPERATOR ID: UInt16 value 3, or 100-32767<br>PASSWORD: UInt16 value 0-65535<br>Module.Login=100:12345<br><br>[OPERATOR ID];[OPERATOR TAG];[PASSWORD]<br>If provided, use OPERATOR ID, OPERATOR TAG, and PASSWORD credentials for authentication.<br>OPERATOR ID: UInt16 value 3, or 100-32767<br>OPERATOR TAG: STRING length 16<br>PASSWORD: UInt16 value 0-65535<br>Module.Login=100:ProSoft:12345 |
| Module.Platform           | Module platform<br>Default: 53 (ControlLogix)<br>Valid values: 53 (ControlLogix), 54 (CompactLogix)<br>Module.Platform=53  |

| Argument                 | Description  |
|--------------------------|--|
| Meter.Filter             | Meter Filter Bitmask. Value 1-65535<br>Default: 65535<br>Meter.Filter=65535  |
| Export.Type              | [TYPE], must be one of the following values:<br>FlowCalCFX_v5, FlowCalCFX_v7, FlowCalCFX_v8, CSV<br>Export.Type=FlowCalCFX_v8  |
| Export.Append            | TRUE: Append data to existing export file.<br>FALSE: Overwrite any existing export file.<br>This option is valid for CSV Export Types only.<br>Export.Append=FALSE   |
| Export.Consolidate       | TRUE: Consolidate meter data to common export files per section.<br>FALSE: Individual meter export files per section.<br>This option is valid for CSV Export Types only.<br>Export.Consolidate=FALSE   |
| Export.Data              | [DATA], bitmask of data sections to export<br>BIT 0: Configuration<br>BIT 1: Events<br>BIT 2: Alarms<br>BIT 3: Hourly Archive<br>BIT 4: Daily Archive<br>To only export the configuration and event data sections, use<br>Export.Data=3<br>To export all data sections, use<br>Export.Data=31<br><br>Note: Export.type FlowCalCFX_v5 does not support BIT 4: Daily Archive |
| Export.Folder            | Path to export folder.<br>Export.Folder="C:\FCDATA"  |
| Export.DateRange         | [START DATE]:[END DATE]<br>Date formats are YYYYMMDD. Data is inclusive of data range.<br>Export.DateRange=20160101:20160131   |
| Export.RelativeDateRange | [DAYS]:[HOURS]<br>DAYS and HOURS are UInt16. Data is inclusive of data range.<br>To export the last 7 days of data.<br>Export.RelativeDateRange=7:0  |
| Export.AlarmDetails      | >0: Enable export alarm detail records.<br>=0: Disable export alarm detail records<br>Value range 0..65535<br>Export.AlarmDetails=65535  |
| Export.EventDetails      | >0: Enable export event detail records.<br>=0: Disable export event detail records<br>Value range 0..65535<br>Export.EventDetails=65535  |
| Execute.Run              | TRUE: Automatically execute on application run and exit application upon completion.<br>Execute.Run=TRUE   |



## 7 Support, Service & Warranty

### 7.1 Contacting Technical Support

ProSoft Technology, Inc. is committed to providing the most efficient and effective support possible. Before calling, please gather the following information to assist in expediting this process:

- Product Version Number
- System architecture
- Network details

If the issue is hardware related, we will also need information regarding:

- Module configuration and associated ladder files, if any
- Module operation and any unusual behavior
- Configuration/Debug status information
- LED patterns
- Details about the interfaced serial, Ethernet or Fieldbus devices

**Note:** For technical support calls within the United States, ProSoft's 24/7 after-hours phone support is available for urgent plant-down issues.

|  |   |
|--|---|
| <p><b>North America (Corporate Location)</b></p> <p>Phone: +1.661.716.5100<br/>                 info@prosoft-technology.com<br/>                 Languages spoken: English, Spanish<br/>                 REGIONAL TECH SUPPORT<br/>                 support@prosoft-technology.com</p>   | <p><b>Europe / Middle East / Africa Regional Office</b></p> <p>Phone: +33.(0)5.34.36.87.20<br/>                 france@prosoft-technology.com<br/>                 Languages spoken: French, English<br/>                 REGIONAL TECH SUPPORT<br/>                 support.emea@prosoft-technology.com</p>    |
| <p><b>Latin America Regional Office</b></p> <p>Phone: +52.222.264.1814<br/>                 latinam@prosoft-technology.com<br/>                 Languages spoken: Spanish, English<br/>                 REGIONAL TECH SUPPORT<br/>                 support.la@prosoft-technology.com</p> | <p><b>Asia Pacific Regional Office</b></p> <p>Phone: +60.3.2247.1898<br/>                 asiapc@prosoft-technology.com<br/>                 Languages spoken: Bahasa, Chinese, English, Japanese, Korean<br/>                 REGIONAL TECH SUPPORT<br/>                 support.ap@prosoft-technology.com</p> |

For additional ProSoft Technology contacts in your area, please visit:  
<https://www.prosoft-technology.com/About-Us/Contact-Us>.

### 7.2 Warranty Information

For complete details regarding ProSoft Technology's TERMS & CONDITIONS OF SALE, WARRANTY, SUPPORT, SERVICE, and RETURN MATERIAL AUTHORIZATION INSTRUCTIONS, please see the documents at:

[www.prosoft-technology.com/legal](http://www.prosoft-technology.com/legal)

Documentation is subject to change without notice.